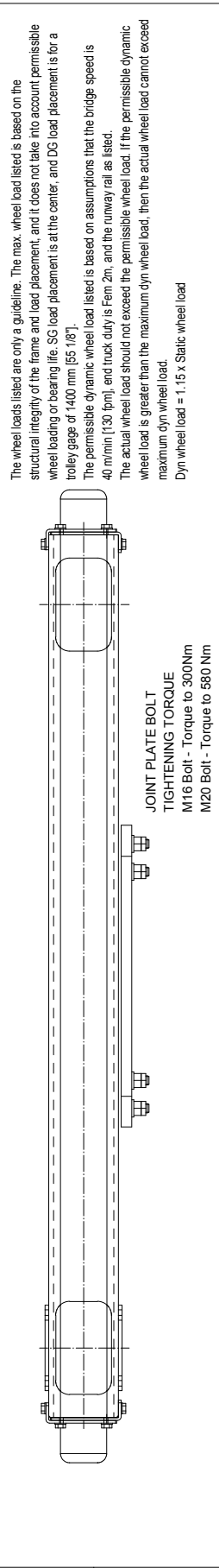


The document is the absolute property of RSN Materials Handling, Inc. This document must not be copied without the written permission of RSN Materials Handling, Inc. The contents herein must not be disclosed to a third party nor be used for any unauthorized purposes. Corrections will be processed.

RSN16 END TRUCK SIDE JOINT PLATE TYPE EBN

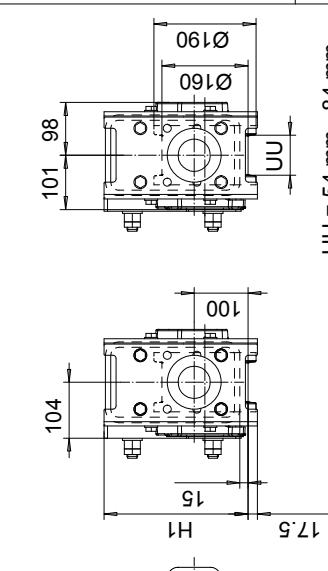


The wheel loads listed are only a guideline. The max. wheel load listed is based on the structural integrity of the frame and load placement, and it does not take into account permissible wheel loading or bearing life. SG load placement is at the center, and DG load placement is for a trolley gauge of 1400 mm (55 1/8").

The permissible dynamic wheel load listed is based on assumptions that the bridge speed is 40 m/min (130 fpm), end truck duty is Fern 2m, and the runway rail as listed.

The actual wheel load should not exceed the permissible wheel load. If the permissible dynamic wheel load is greater than the maximum dyn wheel load, then the actual wheel load cannot exceed maximum dyn wheel load.

Dyn wheel load = 1.15 x Static wheel load



UU = 54 mm - 84 mm

| Buffer type | L1 (mm) | Ø (mm) |
|----------------------------------|---------|--------|
| B | 68 | 80 |
| C | 85 | 100 |
| D | 105 | 125 |
| K | 80 | 80 |
| G | 100 | 100 |
| E | 150 | 100 |
| M | 125 | 125 |
| F | 190 | 125 |
| H | 160+100 | 160 |
| P | 240+100 | 160 |
| B, C, D rubber | | |
| K, G, E, M, F, H, P polyurethane | | |

| Joint plate | JPH (mm) | JPL (mm) | Min. Wheelbase (mm) |
|---------------|----------|----------|---------------------|
| EBN16-350x255 | 255 | 350 | 1600; DG |
| EBN16-350x305 | 305 | 350 | 1600; DG |
| EBN16-450x255 | 255 | 450 | 2000; DG |
| EBN16-450x305 | 305 | 450 | 2000; DG |

N=standard, E=Special
 -primer paint, color code
 Joint plate distance (pin to pin with double DG girders; driving wheel to pin with asymmetrical single SG girder)
 Buffer type
 Joint plate height (JPH)
 Joint plate length (pin to pin) (JPL)
 - =1WD, D =2WD (Number of driving wheels/end carriage)
 Wheel groove =UU
 Wheel base =SS (type)
 - =std, C =asymmetrical joint
 Type of end carriage

Product Code example
RSN16-1669-450255C0000-N

| Wheelbase code | SS (mm) | H1 (mm) | Max. dyn whl load, (kN) | | Perm dyn whl load, (kN) | | Approx. Wgt / Trk (kg) | | |
|----------------|---------|---------|-------------------------|----|-------------------------|---------|------------------------|-----|-----|
| | | | SG | DG | ASCE 40 | ASCE 60 | ASCE 85 | SG | DG |
| 16 | 1600 | 268 | 80 | 80 | 50 | 67.9 | 75 | 186 | 213 |
| 20 | 2000 | 268 | 80 | 80 | 50 | 67.9 | 75 | 209 | 236 |
| 25 | 2500 | 268 | 80 | 80 | 50 | 67.9 | 75 | 237 | 264 |
| 32; DG | 3150 | 268 | - | 80 | 50 | 67.9 | 75 | - | 300 |
| 32; SG | 3150 | 318 | 80 | - | 50 | 67.9 | 75 | 301 | - |
| 40 | 4000 | 318 | 63 | 69 | 50 | 67.9 | 75 | 357 | 384 |
| 45 | 4500 | 318 | 44 | 48 | 50 | 67.9 | 75 | 389 | 416 |

| Part No. | Description | Specification | Std. | Quantity |
|-----------|-----------------|-----------------|------|----------|
| RSN16-EBN | END TRUCK | END TRUCK | | |
| RSN16-EBN | OUTLINE DRAWING | OUTLINE DRAWING | | |
| RSN16-EBN | RSN16-EBN | RSN16-EBN | | |
| RSN16-EBN | RSN16 END TRUCK | RSN16 END TRUCK | | |