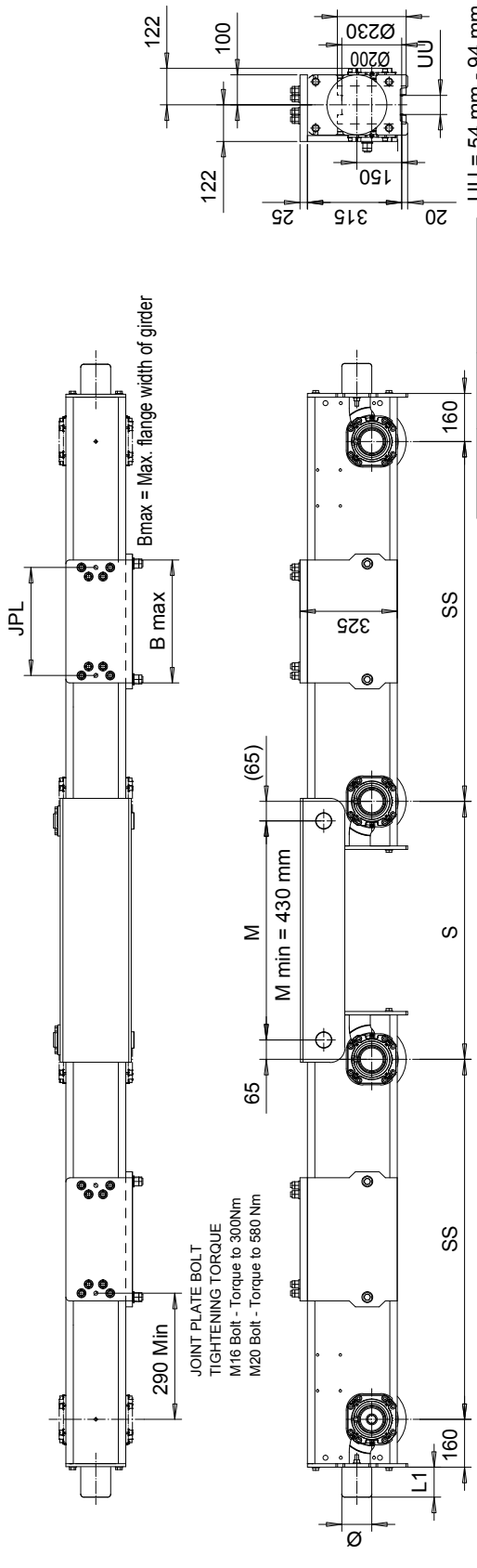


RTN20B END TRUCK SIDE JOINT PLATE TYPE R

This document is the absolute property of R&M Materials Handling, Inc. This document must not be copied without the written permission of R&M Materials Handling, Inc. The contents thereof must not be disclosed to a third party nor be used for any unauthorized purpose. Contravention will be prosecuted.



Buffer type	L1 (mm)	Ø (mm)
A	53	63
B	68	80
C	85	100
D	105	125
K	80	80
G	100	100
E	150	100
F	190	125
H	160	160
I	200	200
M	125	125
P	240	160
S	300	200

B, C, D rubber
K, G, E, F, H, I, M, P, S polyurethane

Joint plate	JPL (mm)	B max (mm)
R3	250	300
R4	360	410
R5	470	520
R6	580	630

The wheel loads listed are only a guideline. The max. wheel load listed is based on the structural integrity of the frame and load placement, and it does not take into account permissible wheel loading or bearing life. SG load placement is at the center, and DG load placement is for a trolley gage of 1400 mm [55'10"]. The permissible dynamic wheel load listed is based on assumptions that the bridge speed is 40 m/min [130 fpm], and truck duty is Fcm 2m, and the runway rail as listed. The actual wheel load should not exceed the permissible wheel load. If the permissible dynamic wheel load is greater than the maximum dyn wheel load, then the actual wheel load cannot exceed maximum dyn wheel load. Dyn wheel load = 1.15 x static wheel load

(Product Code example)
RTN20B1274-R31540C0860-N

- N=standard, E=Special
- -primer paint, color code
- Inner wheel distance =S
- Buffer type
- Joint plate distance =PP, (pin to pin, with double girder)
- Joint plate code
- - =1WD, D =2WD
- Wheel groove =UU
- Wheel base =SS
- -B =bogie
- Type of end carriage

Wheel base Code	SS (mm)	Max dyn whl load (kN)	Permissible dyn whl load, (kN)	ASCE 40	ASCE 60	ASCE 85	Approx. Weight (kg)
12	1200	132	65.9	88	98	85	469
14	1400	132	65.9	88	98	85	498
16	1600	132	65.9	88	98	85	527
18	1800	132	65.9	88	98	85	556
20	2000	132	65.9	88	98	85	585

Rev	Description	Specification	Std	Drawing
001	RTN20B	RTN20B		
002	2008-05-23	END TRUCK		
003		OUTLINE DRAWING		
004		RTN20B-R		
005		RTN20B END TRUCK SIDE JOINT		

R&M MATERIALS HANDLING INC. 1110 PO BOX 10000 WILSONVILLE, OR 97147