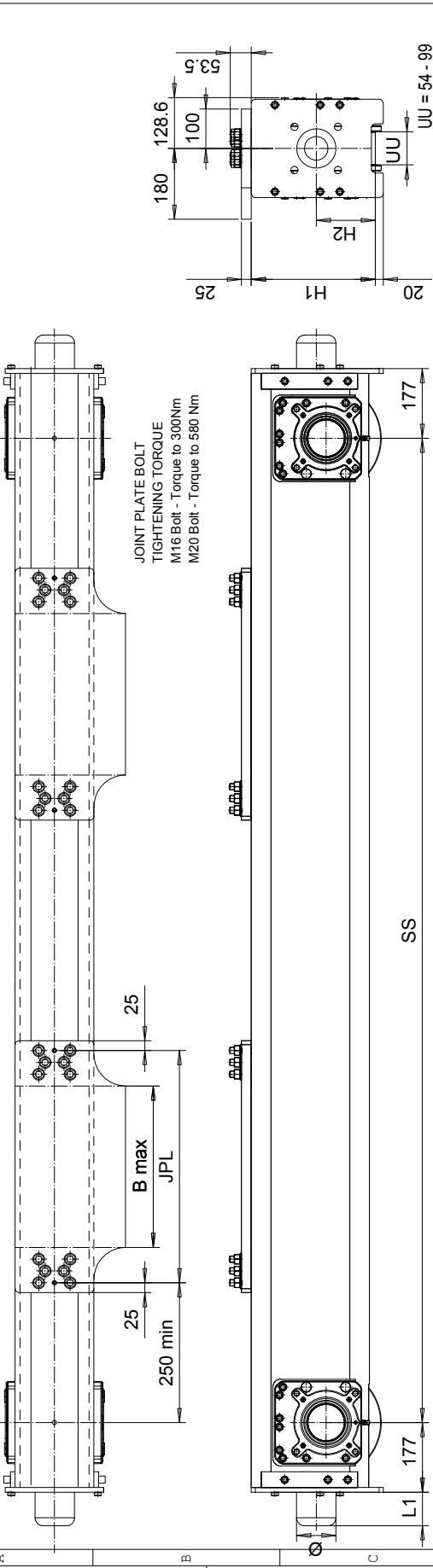


This document is the absolute property of R&M Materials Handling, Inc. This document must not be copied without the written permission of R&M Materials Handling, Inc. The contents thereof must not be disclosed to a third party nor be used for any unauthorized purpose. Contravention will be prosecuted.

RTN25 END TRUCK TOP JOINT PLATE TYPE H



Wheelbase code	SS (mm)	Max dyn whl load, (kN)		Perm dyn whl load, (kN)		Approx Wt., Trk, kg		H1	H2
		SG	DG	ASCE 60	ASCE 85	SG	DG		
20	2000	185	-	114.6	126.5	375	-	315	150
25	2500	171	185	114.6	126.5	419	459	315	150
32	3150	170	185	114.6	126.5	545	585	415	150
40	4000	158	185	114.6	126.5	637	677	415	150
45	4500	128	139	114.6	126.5	691	731	415	150
50	5000	138	182	114.6	126.5	904	944	420	155
55	5500	125	135	114.6	126.5	973	1013	420	155

Product Code example
RTN25-2574-H40610C0000-N

- N=standard, E=Special
- primer paint, color code (not in use with RTN25)
- Buffer type
- Joint plate distance (DG)
- Joint plate code
- =TWD, D =2WD (per truck)
- Wheel groove =UU
- Wheel base =SS
- std, C=asymmetrical joint
- Type of end carriage

The wheel loads listed are only a guideline. The max. wheel load listed is based on the structural integrity of the frame and load placement, and it does not take into account permissible wheel loading or bearing life. SG load placement is at the center, and DG load placement is for a trolley gauge of 1400 mm [55'18"].
 The permissible dynamic wheel load listed is based on assumptions that the bridge speed is 40 m/min [130 fpm], end truck duty is Fem 2m, and the runway rail as listed.
 If permissible dynamic wheel load is greater than the maximum dyn wheel load, use maximum dyn wheel load to select the end truck.
 Dyn wheel load = 1.15 x static wheel load

Joint plate	JPL (mm)	B max (mm)
H4	590	410
H5	700	520
H7	920	740
H9	1170	990

Buffer type	L1 (mm)	Ø (mm)
B	68	80
C	85	100
D	105	125
K	80	80
G	100	100
E	150	100
F	190	125
H	160	160
I	200	200
M	125	125
P	240	160
S	300	200

B, C, D rubber
 K, G, E, F, H, I, M, P, S polyurethane

Pos	Description	Specification	ETTP/A	Id	Drawing
Design	ETTP/A	ETTP/A	END TRUCK		Ref Drawing
Date	2008-08-11		OUTLINE DRAWING		
Part	SLEDDOCV		RTN25-H		
Part	R&M MATERIALS HANDLING PRODUCTS		RTN25 END TRUCK TOP JOINT		
Revision					10/2014