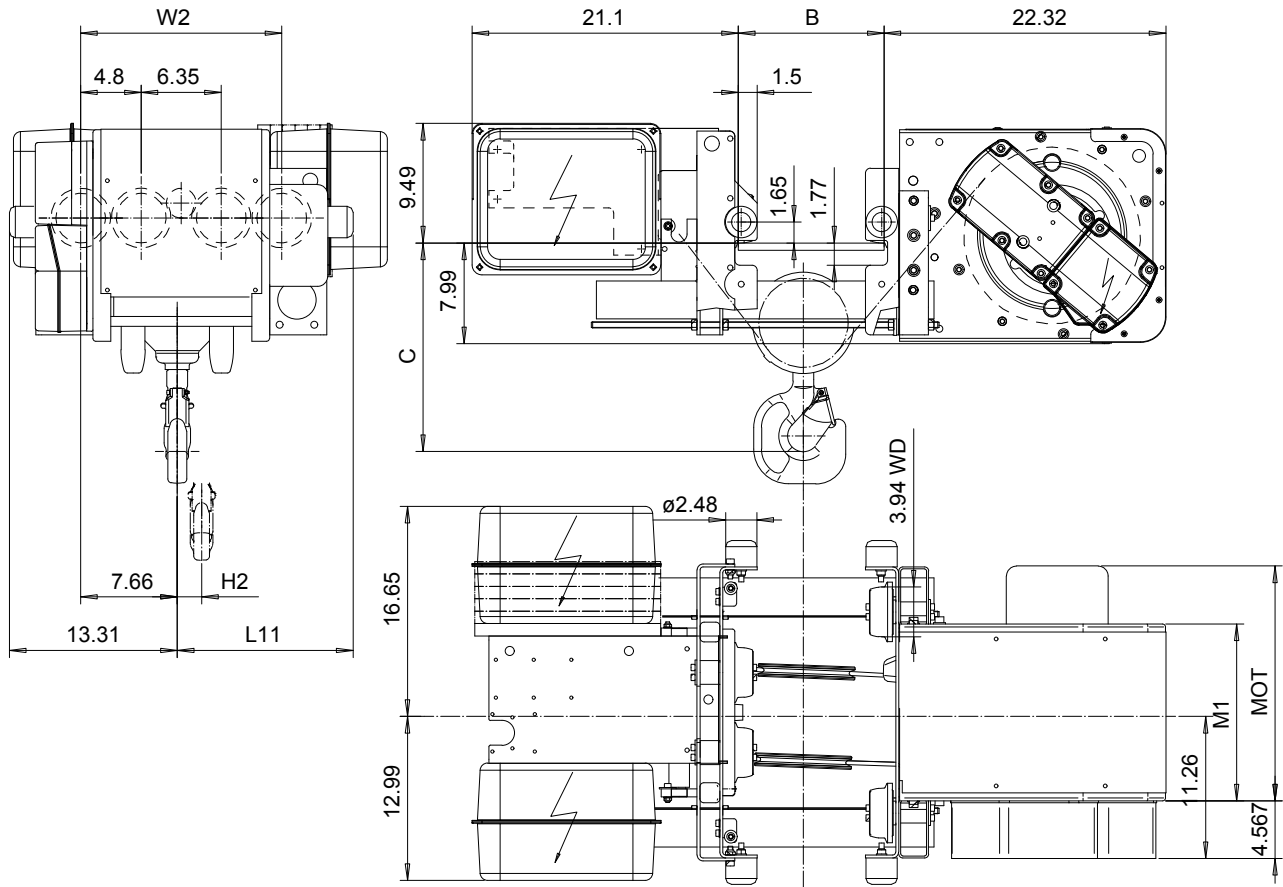


LOW HEADROOM, 4 PART SINGLE

Hoist type:

SX4 041...L0

US-60Hz



Motor	P3	P4	A3	S3	S5
MOT (in)	18.7	22.6	17.6	20.7	23.7
Weight (lb)	77	117	71	62	117

Flange Width, B (in)	Headroom, C (in)	with HS22 Hook oper limit switch (in)
3.93 - 7.88	19.3	22.44
7.89 - 9.84	18.1	22.44
9.88 - 11.81	16.7	22.44
11.85 - 13.78	17.9	22.44
13.81 - 15.75	19.3	22.44
15.78 - 17.72	20.5	22.44
17.75 - 19.3	21.7	22.44

Headroom is related to the flange width

Load (TON)	Class ASME
3	H4+
4	H4+
5	H4

HOL (ft)	Length code	H2 (inch)	L11 (inch)	M1 (inch)	W2 (inch)	Approx Weight (lb)
19'-8"	B	1.92	13.62	14.03	15.94	845
29'-6"	C	2.91	17.56	17.95	19.88	889
39'-4"	D	3.89	21.5	21.89	23.81	933

This document is the absolute property of R&M Materials Handling, Inc. This document must not be copied without the written permission of R&M Materials Handling, Inc. The contents thereof must not be disclosed to a third party nor be used for any unauthorized purpose. Contravention will be prosecuted.

CSDPAL Design	CSDPAL Chd	Appd	Ref Drawing	QB-L-04
2002-08-27 Date	TROLLEY; LOW HEADROOM			1:6.5
SLEIENG1 Owner Dept	4 ROPE FALLS			Folder
R&M MATERIALS HANDLING INC.	R&M MATERIALS HANDLING, INC HOIST & CRANE PRODUCTS SPRINGFIELD, OHIO	D002092-A		Issue 6