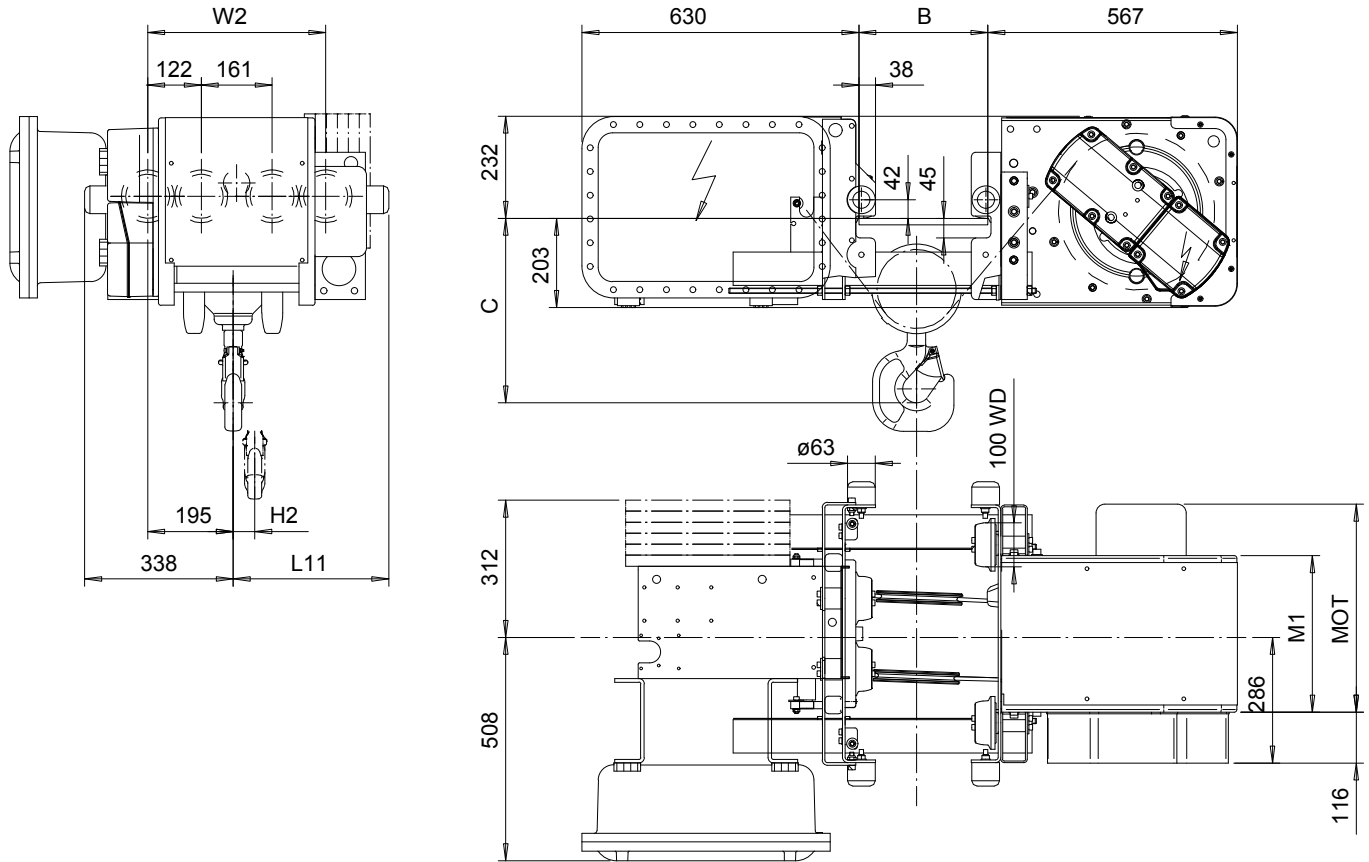


# R&M SPACEMASTEREX

## LOW HEADROOM, 4 PART SINGLE SX4 EX 041...L0



SI-60Hz

HEADROOM TABLE	
Flange Width, B (mm)	Headroom, C (mm)
100 - 199	490
200 - 249	460
250 - 300	425
301 - 350	455
351 - 400	490
401 - 450	520
451 - 490	550
Headroom is related to the flange width	

Motor	P2	P3
MOT (mm)	446	476
Weight (kg)	31	35

HOL (m)	Length code	H2 (mm)	L11 (mm)	M1 (mm)	W2 (mm)	Approx Weight (kg)
6	B	49	346	356	405	383
9	C	74	446	456	505	403
12	D	99	546	556	605	423

Load (kg)	Class Fem/ISO
3000	3m/M6
4000	3m/M6
5000	2m/M5