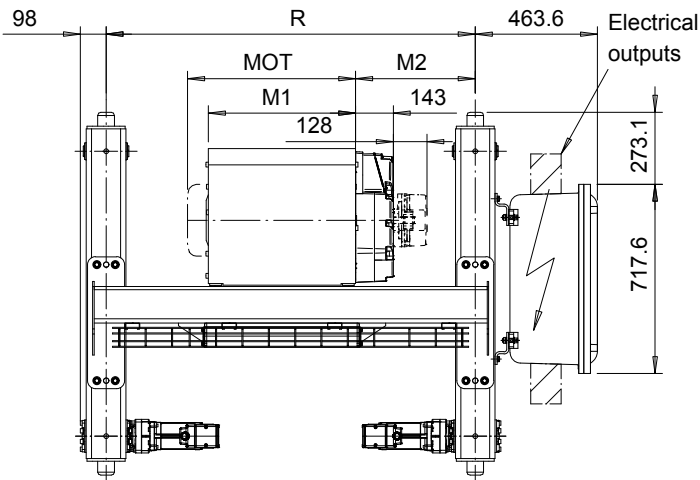
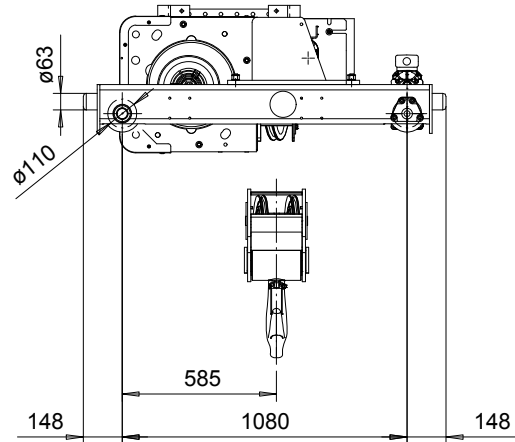
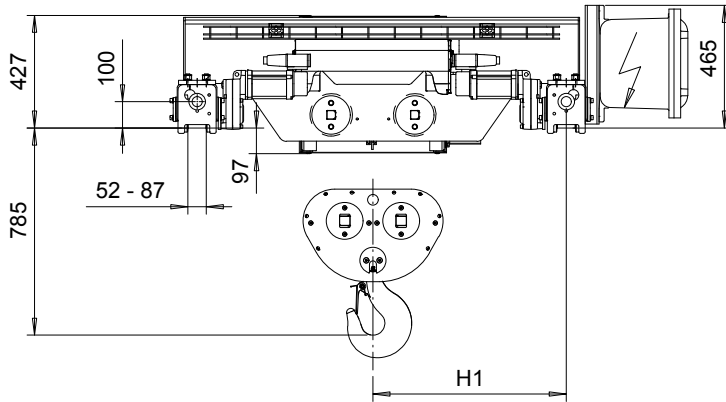


# R&M SPACEMASTER EX

DOUBLE GIRDER, 4 PART DOUBLE  
SX5 EX 042...D0



SI-60Hz

|             |     |     |
|-------------|-----|-----|
| Motor       | P5  | P6  |
| MOT (mm)    | 578 | 578 |
| Weight (kg) | 58  | 85  |

|           |               |
|-----------|---------------|
| Load (kg) | Class Fem/ISO |
| 6300      | 3m/M6         |
| 8000      | 3m/M6         |
| 10000     | 2m/M5         |

| HOL (m) | Length code | H1 (mm) | M1 (mm) | M2 (mm) | min R (mm) | Approx. Weight (kg) |
|---------|-------------|---------|---------|---------|------------|---------------------|
| 4       | D           | 733     | 558     | 454     | 1400       | 825                 |
| 6.5     | E           | 733     | 678     | 394     | 1400       | 845                 |
| 9       | F           | 883     | 828     | 469     | 1700       | 895                 |
| 12.5    | G           | 883     | 1018    | 374     | 1700       | 925                 |
| 16.5    | H           | 1033    | 1268    | 399     | 2000       | 1000                |
| 23      | J           | 1233    | 1618    | 424     | 2400       | 1090                |

min R is minimum rail gauge when service platform or second brake is supplied.

Standard rail gauges are 1400, 1700, 2000 and 2400

The brake is mounted to the gearcase on length H and J hoists.

R&M reserves the right to alter or amend the above information without notice

QCEXUS24M RM  
Class 1 Div.2  
EX-CSA-C1-D2