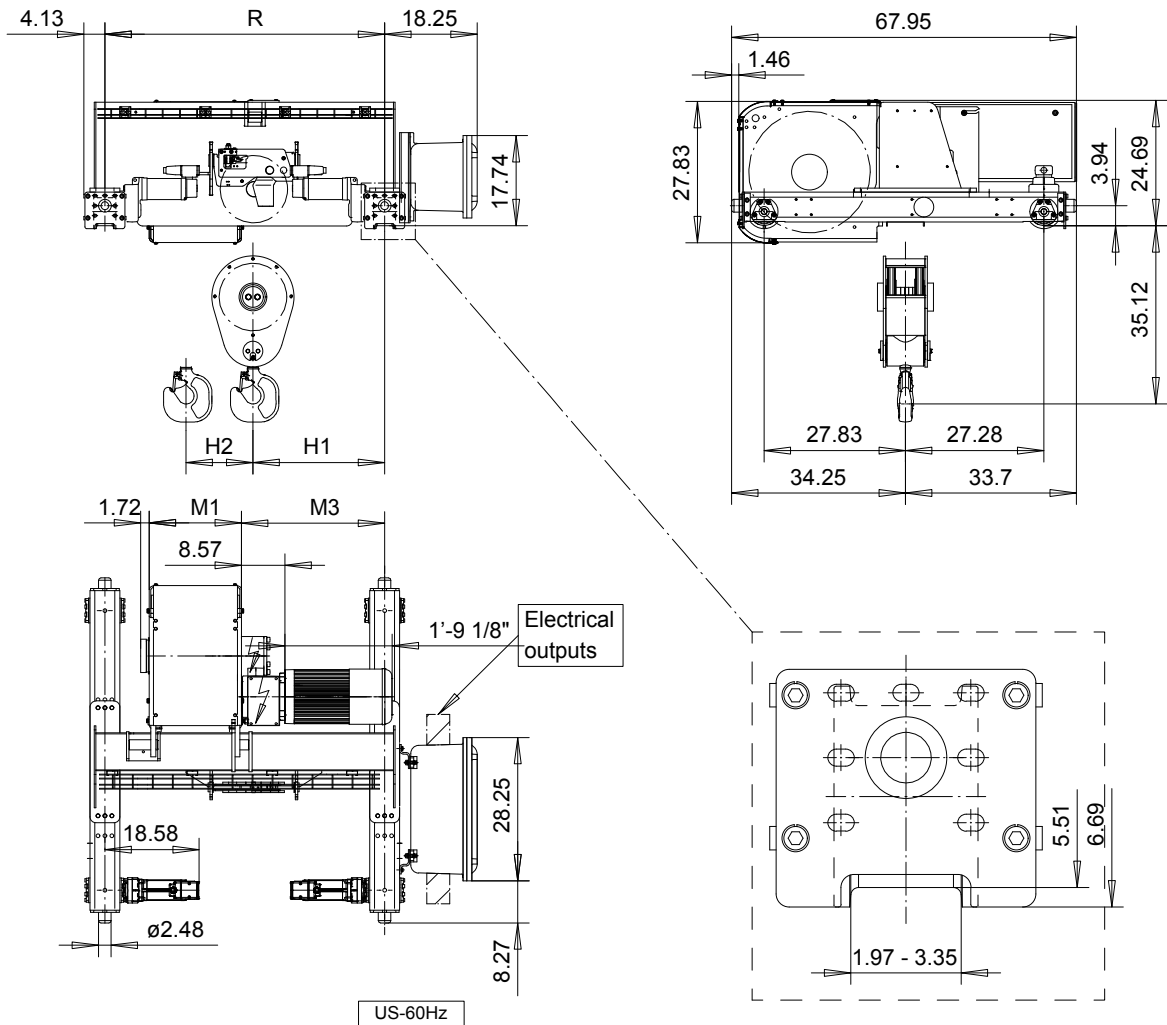


R&M SPACEMASTER EX

DOUBLE GIRDER, 4 PART SINGLE SX6 EX 041...D0



US-60Hz

Load (TON)	Class ASME	Hoisting speed	
		(fpm)	
12 1/2	H4+	16/2.4	20/3.1
15	H4	16/2.4	20/3.1
20	H3	16/2.4	-

HOL (ft-in)	Length code	M1 (in)	M3 (in)	H1 (in)	H2 (in)	min R-max R (in)	Weight (lb)
24'-6"	C	18 3/16	28 3/16	25 15/16	2 3/4	55 1/8	3086
34'-5"	D	22 1/8	31 9/16	29 5/16	3 3/4	66 15/16	3086
45'-11"	E	26 7/8	31 9/16	29 5/16	4 15/16	66 15/16 - 78 3/4	3197
59'-0"	F	32 3/4	37 7/16	35 3/16	6 3/8	78 3/4 - 106 5/16	3373
77'-1"	G	40 1/4	45 5/16	43 1/16	8 1/4	94 1/2 - 122 1/16	3616
100'-0"	H	50 1/16	57 15/16	55 5/8	10 3/4	122 1/16 - 149 5/8	4057
131'-2"	J	63 7/8	61 7/16	59 1/4	14 3/16	133 7/8 - 165 3/8	4519
159'-1"	K	75 11/16	76 5/8	74 3/8	17 1/16	165 3/8	5049

min R is minimum rail gauge when service platform is supplied. Weight calculated at minR. Weight increases with longer gauges. Standard rail gauges are 55 1/8", 66 15/16", 78 3/4", 94 1/2", 106 5/16", 122 1/16", 149 5/8", and 165 3/8"

R&M reserves the right to alter or amend the above information without notice