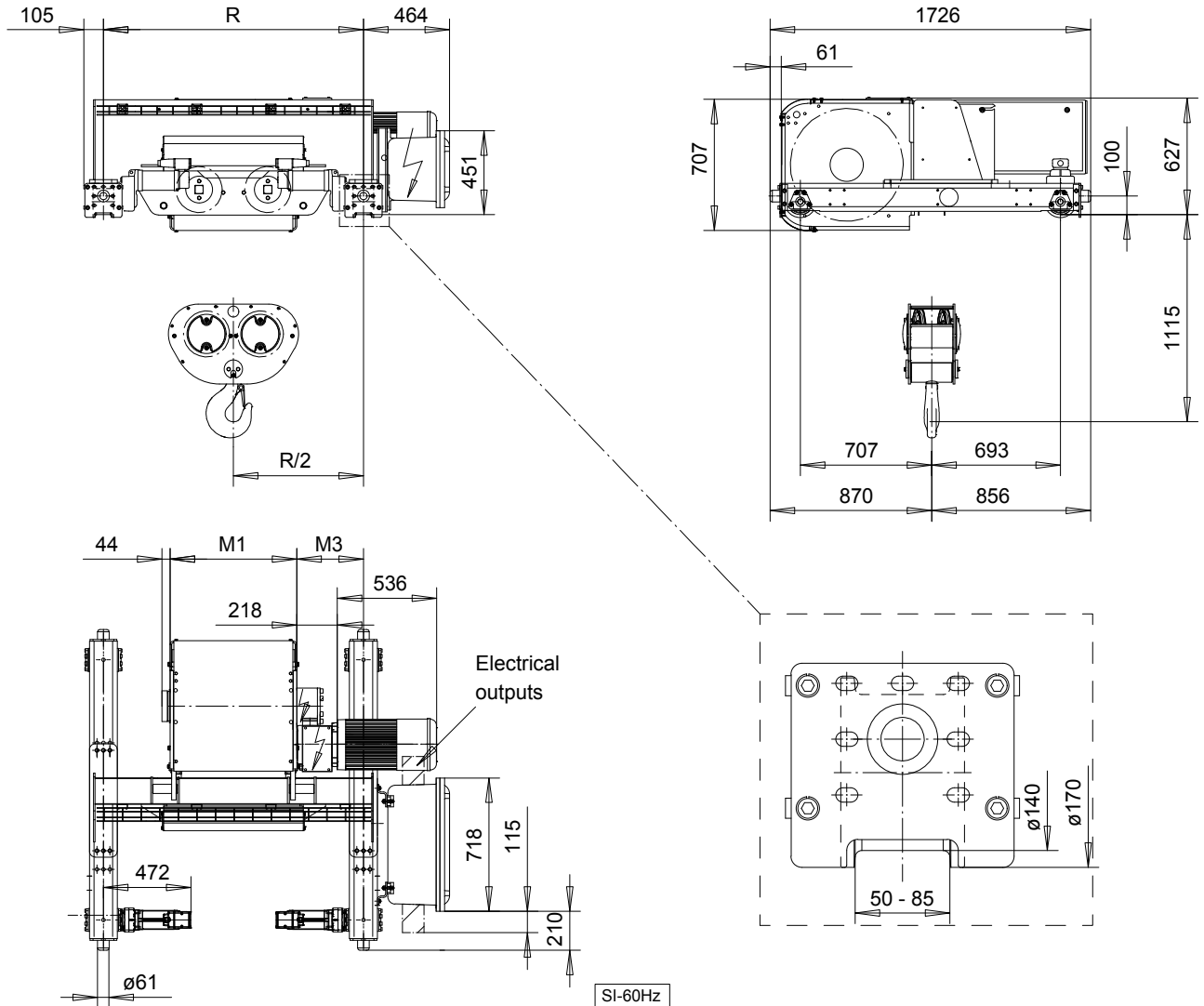


R&M SPACEMASTER EX

DOUBLE GIRDER, 4 PART DOUBLE
SX6 EX 042...D0



Load (kg)	Class Fem/ISO	Hoisting speed (m/min)	
		4.8/0.8	6/1
12500	3m/M6	4.8/0.8	6/1
16000	2m/M5	4.8/0.8	6/1
20000	1Am/M4	4.8/0.8	-

HOL (m)	Length code	M1 (mm)	M3 (mm)	min R-max R (mm)	Weight (kg)
8	E	682	359	1400	1370
11	F	832	434	1700	1460
14.5	G	1022	339	1700-2000	1530
19.5	H	1272	364	2000-2400	1640
26	J	1622	389	2400-2700	1790
31.5	K	1922	389	2700-3100	1970
38.5	L	2272	414	3100-3400	2210
43	M	2522	439	3400-3800	2360
49	N	2822	489	3800-4200	2540

min R is minimum rail gauge when service platform is supplied. Weight calculated at minR. Weight increases with longer gauges. Standard rail gauges are 1400, 1700, 2000, 2400, 2700, 3100, 3400, 3800, and 4200

R&M reserves the right to alter or amend the above information without notice