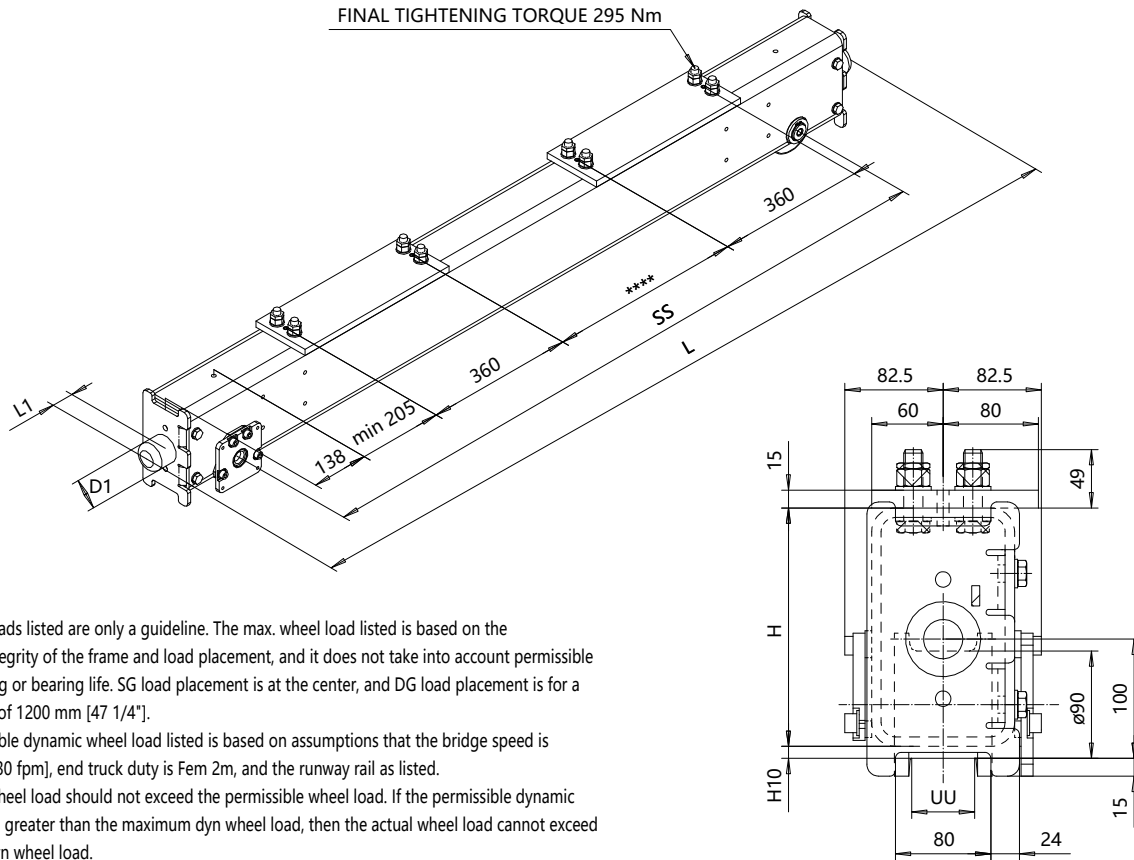


# RTN09 END TRUCK

For single and double girder cranes



The wheel loads listed are only a guideline. The max. wheel load listed is based on the structural integrity of the frame and load placement, and it does not take into account permissible wheel loading or bearing life. SG load placement is at the center, and DG load placement is for a trolley gage of 1200 mm [47 1/4"].

The permissible dynamic wheel load listed is based on assumptions that the bridge speed is 40 m/min [130 fpm], end truck duty is Fem 2m, and the runway rail as listed.

The actual wheel load should not exceed the permissible wheel load. If the permissible dynamic wheel load is greater than the maximum dyn wheel load, then the actual wheel load cannot exceed maximum dyn wheel load.

Dynamic wheel = 1.15 x static wheel load

			SG		DG		Permissible dyn wheel load		
SS	H	H1	WT	Max dyn whl load	WT	Max dyn whl load	ASCE 30	ASCE 40	2" SQ BAR
[mm]	[mm]	[mm]	[kg]	[kN]	[kg]	[kN]	[kN]	[kN]	[kN]
1250	200	10	78	28	-	-	21.5	24.7	31.9
1600	200	10	98	28	100	28	21.5	24.7	31.9
2000	200	10	112	28	114	28	21.5	24.7	31.9
2500	200	10	131	28	133	28	21.5	24.7	31.9

$$L = SS + 276 + 2 \cdot L1$$

Available only with ductile iron wheel.



$$UU = 50 \dots 70$$

RTN09 end truck is compatible with the GES3 gear motor and can be equipped with a second gear motor when requested.

If the crane speed is faster, the duty group is more severe, or the actual runway rail is narrower, then the maximum allowable dynamic wheel load must be re-evaluated.

Suitable buffers		
Code	D1 [mm]	L1 [mm]
A	63	53
B	80	68
C	100	85
A, B, C: Rubber		

This document is the absolute property of R&M Materials Handling, Inc.  
This document must not be copied without the written permission of R&M Materials Handling, Inc.  
The contents thereof must not be disclosed to a third party nor be used for any unauthorized purpose. Contravention will be prosecuted.

ETTVPH Design		ETTVPH Chd	Appd	Ref Drawing	
2007-02-20 Date		END CARRIAGE			 1:6
SLEQDOCV Owner Dept		RTN09			Folder ECN09
		D004778-B			Issue 08/2025

