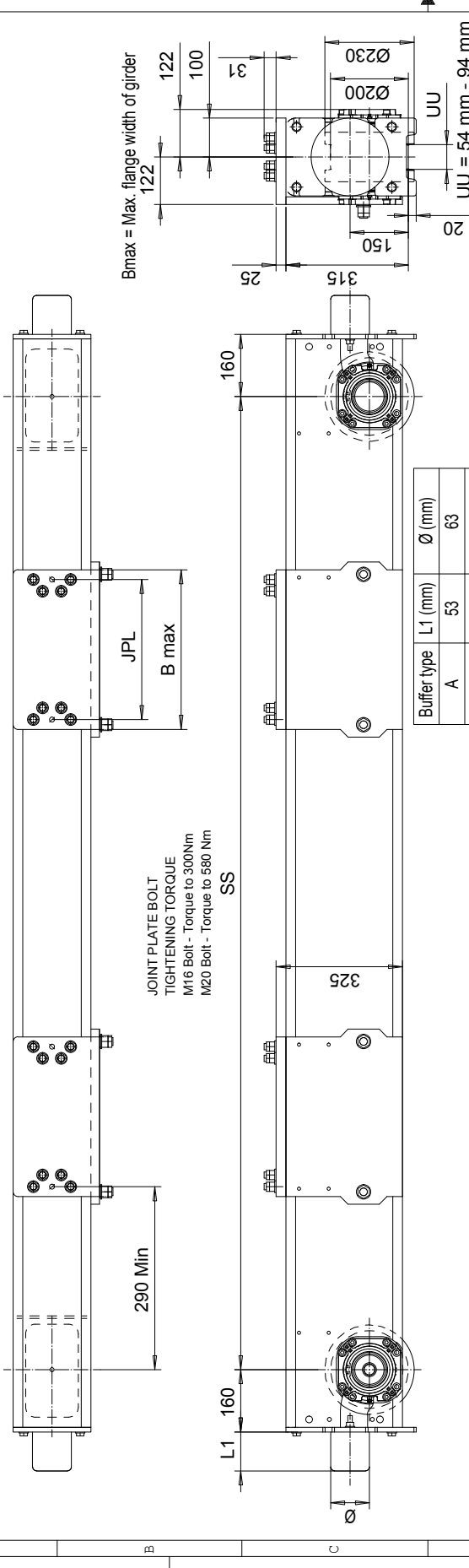


1 2 3 4 5 6 7 8

Included in

RTN20 END TRUCK SIDE JOINT PLATE TYPE R

This document is the absolute property of R&M Materials Handling, Inc. This document must not be copied without the written permission of R&M Materials Handling, Inc. The contents thereof must not be disclosed to a third party nor be used for any unauthorized purpose. Contravention will be prosecuted.



The wheel loads listed are only a guideline. The max. wheel load listed is based on the structural integrity of the frame and load placement, and it does not take into account permissible wheel loading or bearing life. SG load placement is at the center, and DG load placement is for a trolley gage of 1400 mm [55 1/8"].

The permissible dynamic wheel load listed is based on assumptions that the bridge speed is 40 m/min [130 fpm], end truck duty is Fm2m, and the runway rail as listed.

The actual wheel load should not exceed the permissible wheel load. If the permissible dynamic wheel load is greater than the maximum dyn wheel load, then the actual wheel load cannot exceed maximum dyn wheel load.

Dyn wheel load = 1.15 x static wheel load

Buffer type	L1 (mm)	Ø (mm)
A	53	63
B	68	80
C	85	100
D	105	125
K	80	80
G	100	100
E	150	100
F	190	125
H	160	160
I	200	200
M	125	125
P	240	160
S	300	200

Joint plate	Min. Wheelbase, mm	JPL (mm)	B max (mm)
R3	2500; DG	250	300
R4	2500; DG	360	410
R5	2500; DG	470	520
R6	2500; DG	580	630

Product Code example
RTN20-2574-R40840C0000-N

- RTN20 - Wheelbase
- 2574 - Max dyn whl load, (kN)
- R4 - Permissible dynamic wheel load (kN)
- 0840 - Permissible dynamic wheel load, (kN)
- C - Buffer type
- 0000 - Joint plate code
- N - Standard, E=Special primer paint, color code (not in use with RTN20)

Wheelbase code	SS (mm)	Max dyn whl load, (kN)		Perm dyn whl load, (kN)		Approx Wgt / trk (kg)	
		SG	DG	ASCE 60#	ASCE 85#	SG	DG
16	1600	132	132	88	98	252	295
20	2000	132	132	88	98	281	324
25	2500	132	132	88	98	318	361
32	3150	112	132	88	98	365	408
40	4000	75	85	88	98	427	470
45	4500	53	59	88	98	463	506

Rev	Description	Specification	1st	2nd	3rd	4th
001	RTN20-VPH	RTN20-VPH				
002	RTN20-VPH	RTN20-VPH				
003	RTN20-VPH	RTN20-VPH				
004	RTN20-VPH	RTN20-VPH				
005	RTN20-VPH	RTN20-VPH				
006	RTN20-VPH	RTN20-VPH				
007	RTN20-VPH	RTN20-VPH				
008	RTN20-VPH	RTN20-VPH				
009	RTN20-VPH	RTN20-VPH				
010	RTN20-VPH	RTN20-VPH				
011	RTN20-VPH	RTN20-VPH				
012	RTN20-VPH	RTN20-VPH				
013	RTN20-VPH	RTN20-VPH				
014	RTN20-VPH	RTN20-VPH				
015	RTN20-VPH	RTN20-VPH				
016	RTN20-VPH	RTN20-VPH				
017	RTN20-VPH	RTN20-VPH				
018	RTN20-VPH	RTN20-VPH				
019	RTN20-VPH	RTN20-VPH				
020	RTN20-VPH	RTN20-VPH				
021	RTN20-VPH	RTN20-VPH				
022	RTN20-VPH	RTN20-VPH				
023	RTN20-VPH	RTN20-VPH				
024	RTN20-VPH	RTN20-VPH				
025	RTN20-VPH	RTN20-VPH				
026	RTN20-VPH	RTN20-VPH				
027	RTN20-VPH	RTN20-VPH				
028	RTN20-VPH	RTN20-VPH				
029	RTN20-VPH	RTN20-VPH				
030	RTN20-VPH	RTN20-VPH				
031	RTN20-VPH	RTN20-VPH				
032	RTN20-VPH	RTN20-VPH				
033	RTN20-VPH	RTN20-VPH				
034	RTN20-VPH	RTN20-VPH				
035	RTN20-VPH	RTN20-VPH				
036	RTN20-VPH	RTN20-VPH				
037	RTN20-VPH	RTN20-VPH				
038	RTN20-VPH	RTN20-VPH				
039	RTN20-VPH	RTN20-VPH				
040	RTN20-VPH	RTN20-VPH				
041	RTN20-VPH	RTN20-VPH				
042	RTN20-VPH	RTN20-VPH				
043	RTN20-VPH	RTN20-VPH				
044	RTN20-VPH	RTN20-VPH				
045	RTN20-VPH	RTN20-VPH				
046	RTN20-VPH	RTN20-VPH				
047	RTN20-VPH	RTN20-VPH				
048	RTN20-VPH	RTN20-VPH				
049	RTN20-VPH	RTN20-VPH				
050	RTN20-VPH	RTN20-VPH				
051	RTN20-VPH	RTN20-VPH				
052	RTN20-VPH	RTN20-VPH				
053	RTN20-VPH	RTN20-VPH				
054	RTN20-VPH	RTN20-VPH				
055	RTN20-VPH	RTN20-VPH				
056	RTN20-VPH	RTN20-VPH				
057	RTN20-VPH	RTN20-VPH				
058	RTN20-VPH	RTN20-VPH				
059	RTN20-VPH	RTN20-VPH				
060	RTN20-VPH	RTN20-VPH				
061	RTN20-VPH	RTN20-VPH				
062	RTN20-VPH	RTN20-VPH				
063	RTN20-VPH	RTN20-VPH				
064	RTN20-VPH	RTN20-VPH				
065	RTN20-VPH	RTN20-VPH				
066	RTN20-VPH	RTN20-VPH				
067	RTN20-VPH	RTN20-VPH				
068	RTN20-VPH	RTN20-VPH				
069	RTN20-VPH	RTN20-VPH				
070	RTN20-VPH	RTN20-VPH				
071	RTN20-VPH	RTN20-VPH				
072	RTN20-VPH	RTN20-VPH				
073	RTN20-VPH	RTN20-VPH				
074	RTN20-VPH	RTN20-VPH				
075	RTN20-VPH	RTN20-VPH				
076	RTN20-VPH	RTN20-VPH				
077	RTN20-VPH	RTN20-VPH				
078	RTN20-VPH	RTN20-VPH				
079	RTN20-VPH	RTN20-VPH				
080	RTN20-VPH	RTN20-VPH				
081	RTN20-VPH	RTN20-VPH				
082	RTN20-VPH	RTN20-VPH				
083	RTN20-VPH	RTN20-VPH				
084	RTN20-VPH	RTN20-VPH				
085	RTN20-VPH	RTN20-VPH				
086	RTN20-VPH	RTN20-VPH				
087	RTN20-VPH	RTN20-VPH				
088	RTN20-VPH	RTN20-VPH				
089	RTN20-VPH	RTN20-VPH				
090	RTN20-VPH	RTN20-VPH				
091	RTN20-VPH	RTN20-VPH				
092	RTN20-VPH	RTN20-VPH				
093	RTN20-VPH	RTN20-VPH				
094	RTN20-VPH	RTN20-VPH				
095	RTN20-VPH	RTN20-VPH				
096	RTN20-VPH	RTN20-VPH				
097	RTN20-VPH	RTN20-VPH				
098	RTN20-VPH	RTN20-VPH				
099	RTN20-VPH	RTN20-VPH				
100	RTN20-VPH	RTN20-VPH				

RTN20 END TRUCK SIDE JOINT

RTN20-R

RTN20 END TRUCK SIDE JOINT

08/2013