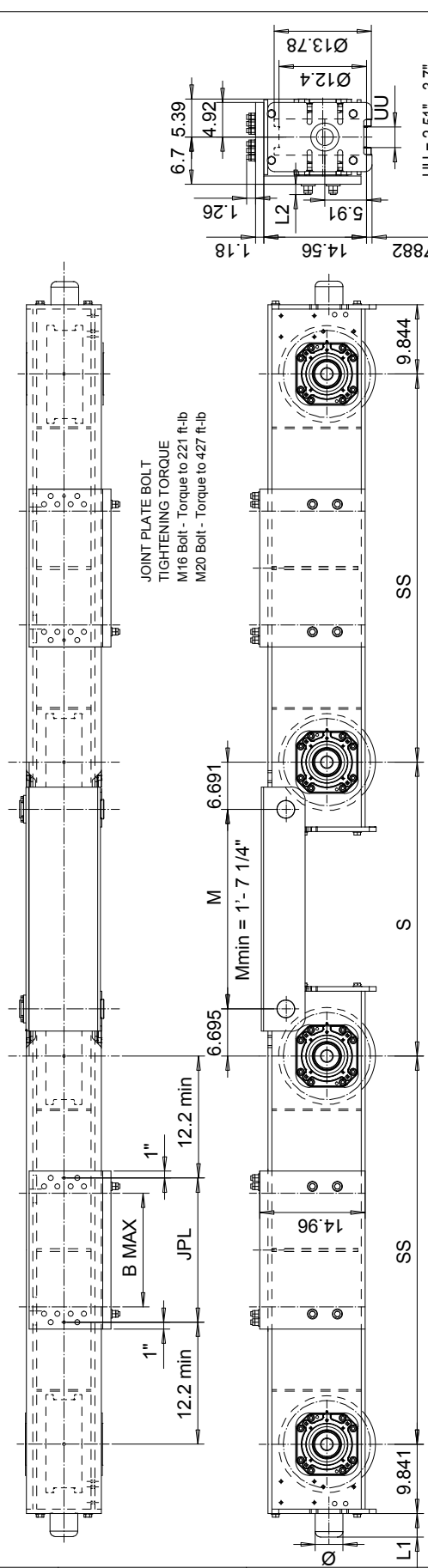


This document is the absolute property of R&M Materials Handling, Inc. This document must not be copied without the written permission of R&M Materials Handling, Inc. The contents thereof must not be disclosed to a third party nor be used for any unauthorized purpose. Convention will be prosecuted.

RTN32B END TRUCK SIDE JOINT PLATE TYPE Q



**JOINT PLATE BOLT
TIGHTENING TORQUE**
M16 Bolt - Torque to 221 ft-lb
M20 Bolt - Torque to 427 ft-lb

Buffer type	L1	Ø
B	2 11/16"	3 3/16"
C	3 5/16"	3 15/16"
D	4 1/8"	4 15/16"
E	5 15/16"	3 15/16"
F	7 1/2"	4 15/16"
H	6 5/16"	6 5/16"
I	7 7/8"	7 7/8"
M	4 15/16"	4 15/16"
P	9 7/16"	6 5/16"
S	11 13/16"	7 7/8"
T	13 3/4"	9 7/8"
Y	18 3/4"	9 7/8"

B, C, D rubber
K, G, E, F, H, I, M, P, S polyurethane

Joint plate	JPL	B max	Wheelbase code
Q3	20.47"	16.14"	14-20
Q5	24.80"	20.47"	14-20
Q7	33.46"	29.13"	14-20
Q9	43.31"	38.98"	16-20

The wheel loads listed are only a guideline. The max. wheel load listed is based on the structural integrity of the frame and load placement, and it does not take into account permissible wheel loading or bearing life. Load placement is assumed at the center of each truck.

The permissible dynamic wheel load listed is based on assumptions that the bridge speed is 40 m/min (130 fpm), end truck duty is Fem 2h, and the runway rail is as listed.

The actual wheel load should not exceed the permissible wheel load. If the permissible dynamic wheel load is greater than the maximum dyn wheel load, then the actual wheel load cannot exceed maximum dyn wheel load.

Dynamic wheel load = 1.15 x static wheel load

Product Code example

RTN32B1474-K411940C0000-N

- N=standard, E=Special
- primer paint, color code (not in use with RTN32)
- Buffer type
- Joint plate distance, mm (pin to pin, with DG)
- Joint plate code
- =1WD, D =2WD (Number of driving wheels/truck)
- Wheel groove = UU, mm
- Wheel base = SS, mm
- =std, B=hogleg
- Type of end carriage

Wheelbase code	SS	Max dyn whl load (kip)	Permissible dyn whl load, (kip)	Approx. Wt./Trk, lb
14	4'-7 7/8"	56.93	ASCE 40 25.2 ASCE 60 33.9 ASCE 85 37.5 BETH 135 49.3	2941
16	5'-3"	56.93	ASCE 40 25.2 ASCE 60 33.9 ASCE 85 37.5 BETH 135 49.3	3060
18	5'-10 7/8"	56.93	ASCE 40 25.2 ASCE 60 33.9 ASCE 85 37.5 BETH 135 49.3	3175
20	6'-6 3/4"	56.93	ASCE 40 25.2 ASCE 60 33.9 ASCE 85 37.5 BETH 135 49.3	3290

Pos	Description	Specification	Id	Drawing
ETTP/A	Design	ETTP/A	Chd	Ref Drawing
2008-08-11	Date	END TRUCK		
SLEDDOCV	Part	OUTLINE DRAWING		
R&M	Manufacturer	RTN32B-Q		
HANDLING	Product	RTN32B END TRUCK SIDE JOINT		
SPRINGS/DIG	Product			
1-7	Revision			
ECN422	Revision			
03/2012	Date			