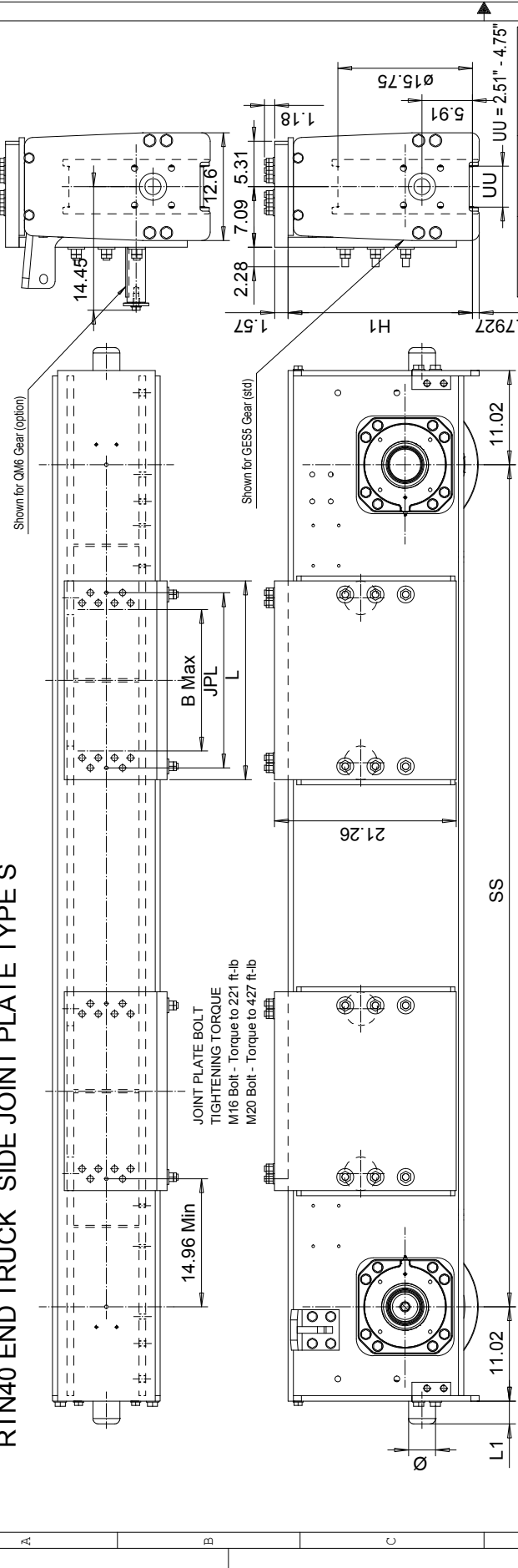


This document is the absolute property of R&M Materials Handling, Inc. This document must not be copied without the written permission of R&M Materials Handling, Inc. The contents thereof must not be disclosed to a third party nor be used for any unauthorized purpose. Contention will be prosecuted.

RTN40 END TRUCK SIDE JOINT PLATE TYPE S



The wheel loads listed are only a guideline. The max. wheel load listed is based on the structural integrity of the frame and load placement, and it does not take into account permissible wheel loading or bearing life. SG load placement is at the center, and DG load placement is for a trolley gage of 1400 mm (55 1/8"). The permissible dynamic wheel load listed is based on assumptions that the bridge speed is 32 min (100 fpm), end truck duty is F or 2m, and the runway rail is as listed. The actual wheel load should not exceed the permissible wheel load. If the permissible dynamic wheel load is greater than the maximum dyn wheel load, then the actual wheel load cannot exceed maximum dyn wheel load.

- N=standard, E=Special
- primer paint, color code (not used with RTN40)
- Buffer type
- Joint plate distance (pin to pin, with double DG girder) (driving wheel to pin with asymmetrical single SG girder)
- Joint plate code
- =TWD, D =2WD (Number of driving wheels/end carriage)
- Wheel groove =UU
- Wheel base =SS
- =std, C=asymmetrical joint
- Type of end carriage

Product Code example
RTN40-257.5-S60700C0000-N

Joint plate	JPL	B max	L	Weight/pc (lb)
S6	20.47"	16.14"	23.25"	306
S7	28.35"	24.41"	31.5"	408
S9	43.31"	38.98"	46.06"	584

Minimum wheelbase with S9 joint plate is 10'-4".

Wheelbase code	SS	Max dyn wtl load, (kip)	Permitted dyn wtl load, (kip)	Approx. Wt*./Trk, lb	H1
25	8'-2 7/16"	78.8	78.8	2751	21 9/16"
32	10'-4"	78.8	78.8	2818	21 9/16"
40	13'-1 1/2"	78.8	78.8	2994	21 3/4"
45	14'-9 1/8"	78.8	78.8	3258	26 5/16"
50	16'-4 7/8"	78.8	78.8	3655	26 7/16"
55	18'-1/2"	78.8	78.8	4030	26 7/16"

Buffer type	L1	Ø
B	2 11/16"	3 3/16"
C	3 5/16"	3 15/16"
D	4 1/8"	4 15/16"
E	5 15/16"	3 15/16"
F	7 1/2"	4 15/16"
H	6 5/16"	6 5/16"
I	7 7/8"	7 7/8"
M	4 15/16"	4 15/16"
P	9 7/16"	6 5/16"
S	11 13/16"	7 7/8"
T	13 3/4"	9 7/8"
Y	18 3/4"	9 7/8"

*Approximate weight of end truck assumes GES5 drive wheel and S6 joint plate. QM6 drive parts adds extra weight.

Weight, lb	QM6	ETTPA
73	ETTPA	Ref Drawing

Design	2008-08-11	Appd
Date	SLEDDOCV	END TRUCK
Part	OUTLINE DRAWING	RTN40-S
Scale	1:1	RTN40 END TRUCK SIDE JOINT

R&M MATERIALS HANDLING, INC. 6/2013