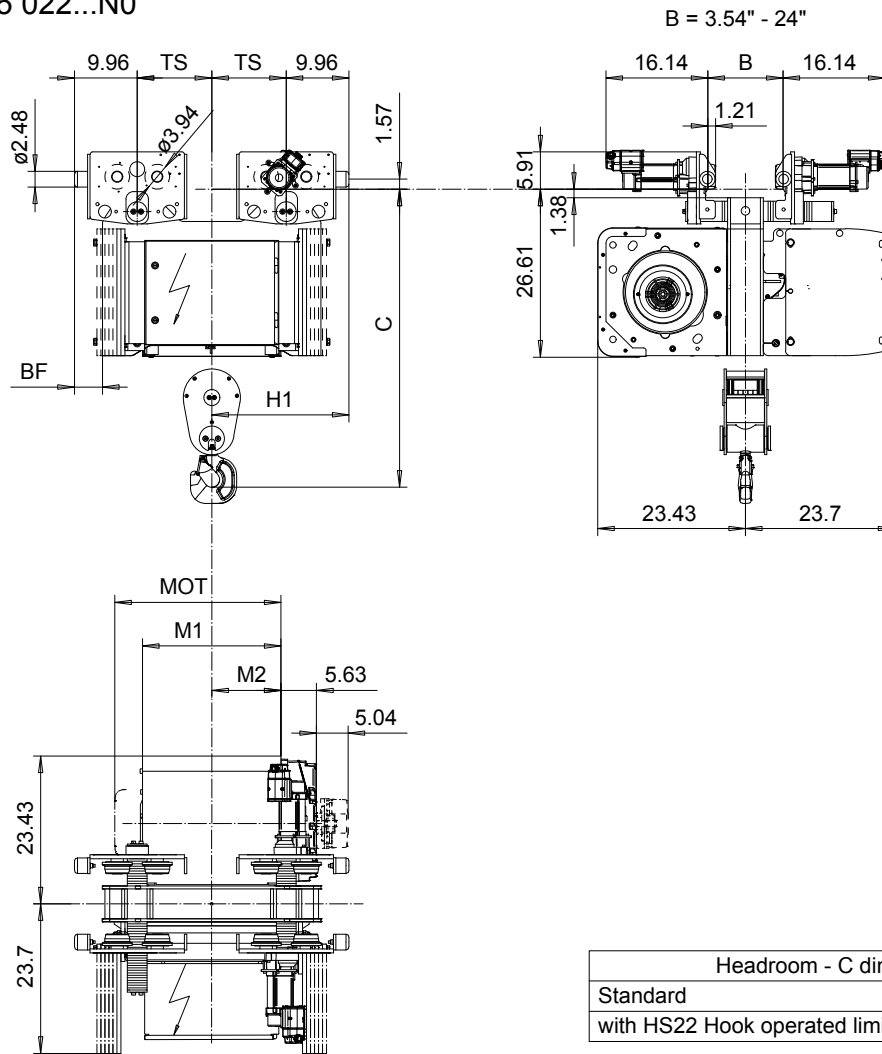


# NORMAL HEADROOM, 2 PART DOUBLE

Hoist type:

SX5 022...N0

US-60Hz



Headroom - C dimension	
Standard	47.24"
with HS22 Hook operated limit switch	49.21"

Motor	P5	P6	P7	A5	S5	S7
MOT (in)	22.76	22.76	24.33	19.61	23.86	29.8
Weight (lb)	128	187	231	99	117	179

Load (TON)	Class ASME
4	H4+
5	H4

HOL (ft)	Length code	H1 (inch)	M1 (inch)	M2 (inch)	BF (inch)	TS (inch)	Approx. Weight (lb)
27'-10"	D	21.77	21.97	10.98	4.49	11.81	1918
42'-7"	E	21.77	26.69	13.35	4.49	11.81	1962
59'-0"	F	21.77	32.6	16.3	4.49	11.81	2072
82'-0"	G	29.65	40.08	20.04	-3.03	19.69	2392
109'-10"	H	29.65	49.92	24.96	-3.03	19.69	2557
150'-11"	J	29.65	63.7	31.85	-3.03	19.69	2745

Approx. Weight calculated with P5 motor.  
 Brake mounted on gearcase cover for Length code H and J.

This document is the absolute property of R&M Materials Handling, Inc. This document must not be copied without the written permission of R&M Materials Handling, Inc. The contents thereof must not be disclosed to a third party nor be used for any unauthorized purpose. Contravention will be prosecuted.

ETVPH Design	ETVPH Chd	Appt	Ref Drawing	QC-N-22
2005-08-26 Date	TROLLEY; NORMAL HEADROOM			
SLEQDQCV Owner (Dept)	2x2 ROPE FALLS			
R&M MATERIALS HANDLING INC.	R&M MATERIALS HANDLING, INC HOIST & CRANE PRODUCTS SPRINGFIELD, OHIO			
D007219-A				Issue 1