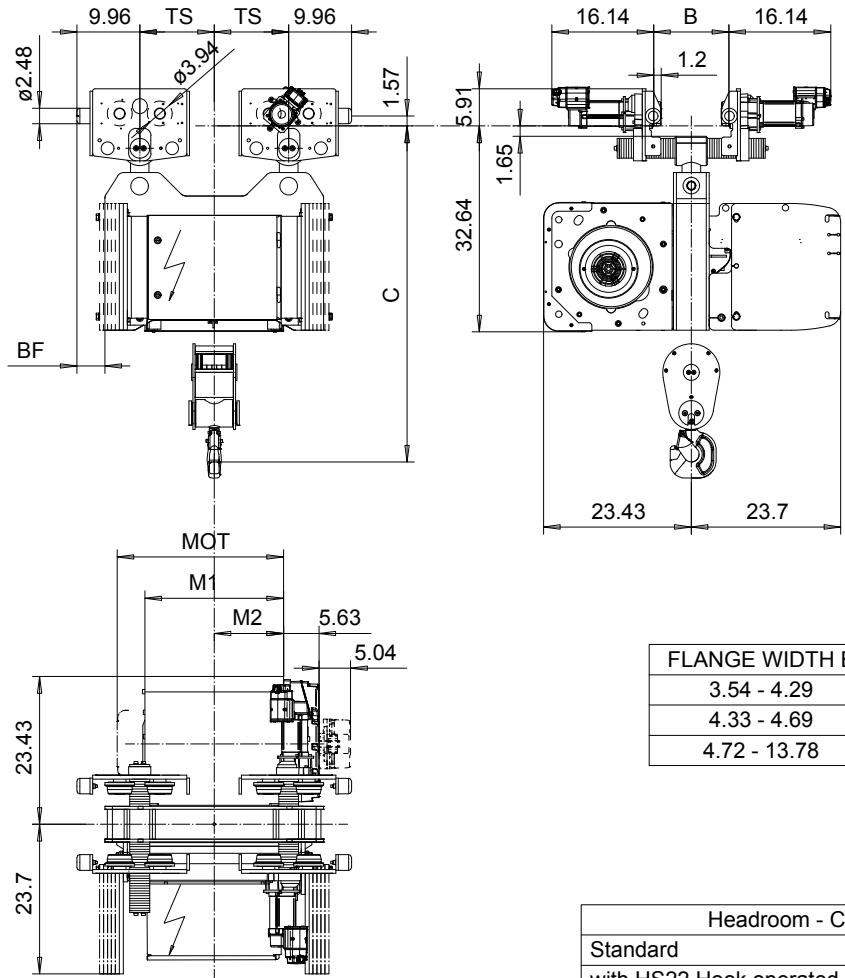


NORMAL HEADROOM, CURVED TRACK, 2 PART DOUBLE

Hoist type:

US-60Hz

SX5 022...N0



FLANGE WIDTH B	R min
3.54 - 4.29	8'-2 1/2"
4.33 - 4.69	6'-6 3/4"
4.72 - 13.78	4'-11 1/16"

Headroom - C dimension	
Standard	53.27"
with HS22 Hook operated limit switch	55.27"

Motor	P5	P6	P7	A5	S5	S7
MOT (in)	22.76	22.76	24.33	19.61	23.86	29.8
Weight (lb)	128	187	231	99	117	179

Load (TON)	Class ASME
4	H4+
5	H4

HOL (ft)	Length code	H1 (inch)	M1 (inch)	M2 (inch)	BF (inch)	TS (inch)	Approx. Weight (lb)
27'-10"	D	21.77	21.97	10.98	4.49	11.81	1962
42'-7"	E	21.77	26.69	13.35	4.49	11.81	2083
59'-0"	F	21.77	32.6	16.3	4.49	11.81	2205
82'-0"	G	29.65	40.08	20.04	-3.03	19.69	2524
109'-10"	H	29.65	49.92	24.96	-3.03	19.69	2679
150'-11"	J	29.65	63.7	31.85	-3.03	19.69	2932

Approx. Weight calculated with P5 motor.

This document is the absolute property of R&M Materials Handling, Inc. This document must not be copied without the written permission of R&M Materials Handling, Inc. The contents thereof must not be disclosed to a third party nor be used for any unauthorized purpose. Contravention will be prosecuted.

ETVPH Design	ETVPH Chd	Appt	Ref Drawing	QC-N-22
2005-08-26 Date	TROLLEY; NORMAL HEADROOM			1:13
SLEQDQCV Owner/Dept	CURVED TRACK, 2x2 ROPE FALLS			Folder
R&M MATERIALS HANDLING INC.	R&M MATERIALS HANDLING, INC HOIST & CRANE PRODUCTS SPRINGFIELD, OHIO			Issue 1
D007220-A				