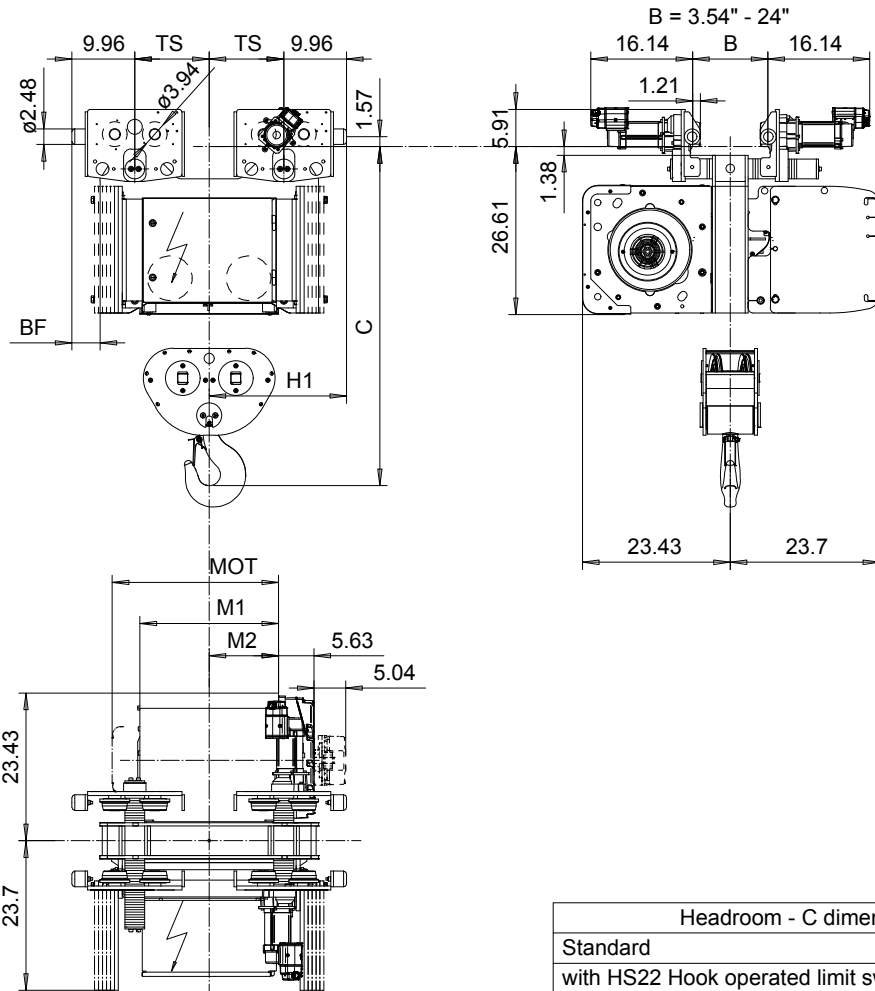


NORMAL HEADROOM, 4 PART DOUBLE

Hoist type:

SX5 042...N0

US-60Hz



Headroom - C dimension	
Standard	53.74"
with HS22 Hook operated limit switch	55.71"

Motor	P5	P6	P7	A5	S5	S7
MOT (in)	22.76	22.76	24.33	19.61	23.86	29.8
Weight (lb)	128	187	231	99	117	179

Load (TON)	Class ASME
6	H4+
7 1/2	H4+
10	H4

HOL (ft)	Length code	H1 (inch)	M1 (inch)	M2 (inch)	BF (inch)	TS (inch)	Approx. Weight (lb)
13'-1"	D	21.77	21.97	10.98	4.49	11.81	2094
21'-3"	E	21.77	26.69	13.35	4.49	11.81	2138
29'-6"	F	21.77	32.6	16.3	4.49	11.81	2249
41'-0"	G	29.65	40.08	20.04	-3.03	19.69	2568
54'-1"	H	29.65	49.92	24.96	-3.03	19.69	2734
75'-5"	J	29.65	63.7	31.85	-3.03	19.69	2921

Approx. Weight calculated with P5 motor.
 Brake mounted on gearcase cover for Length code H and J.

This document is the absolute property of R&M Materials Handling, Inc. This document must not be copied without the written permission of R&M Materials Handling, Inc. The contents thereof must not be disclosed to a third party nor be used for any unauthorized purpose. Contravention will be prosecuted.

ETVPH Design	ETVPH Chd	Appt	Ref Drawing	QC-N-24
2005-08-26 Date	TROLLEY; NORMAL HEADROOM			1:13
SLEQDQCV Drawn (App)	2x4 ROPE FALLS			Folder
R&M MATERIALS HANDLING, INC. R&M MATERIALS HANDLING, INC. HOIST & CRANE PRODUCTS SPRINGFIELD, OHIO	D007221-A			Issue 1