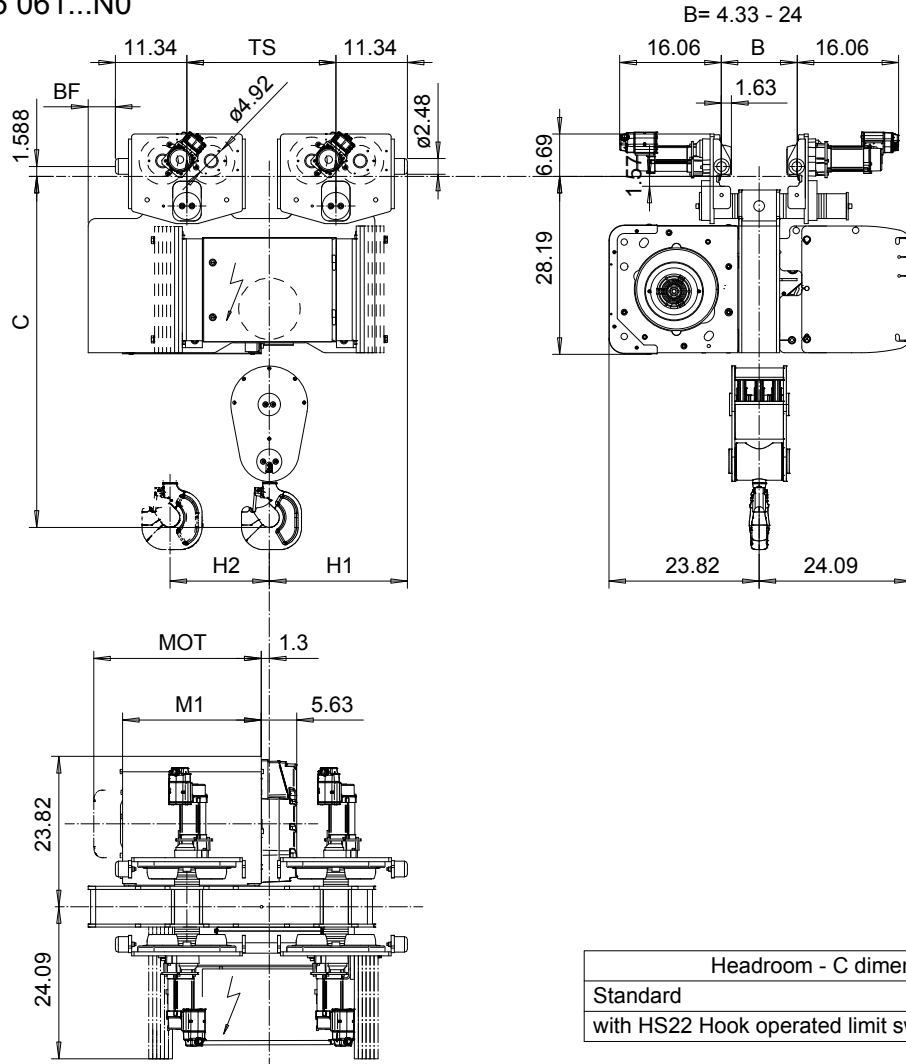


# NORMAL HEADROOM, 6 PART SINGLE

Hoist type:

SX5 061...N0

US-60Hz



Headroom - C dimension	
Standard	55.63"
with HS22 Hook operated limit switch	57.63"

Motor	P5	P6	P7	A5	S5	S7
MOT (in)	22.76	22.76	24.33	19.61	23.86	29.8
Weight (lb)	128	187	231	99	117	179

Load (TON)	Class ASME
12	H4+
15	H4

HOL	Length code	M1 (inch)	BF (inch)	TS (inch)	H1 (inch)	H2 (inch)	Approx. Weight (lb)
19'-8"	D	21.97	4.33	23.62	21.89	2.09	2271
26'-2"	E	26.69	4.33	23.62	21.89	3.07	2315
32'-9"	F	32.6	14.57	28.35	23.46	3.86	2513
42'-7"	G	40.08	14.57	28.35	23.46	5.2	2635

Approx. Weight calculated with P5 motor.

This document is the absolute property of R&M Materials Handling, Inc. This document must not be copied without the written permission of R&M Materials Handling, Inc. The contents thereof must not be disclosed to a third party nor be used for any unauthorized purpose. Contravention will be prosecuted.

Design	ETVPH	Appr	Ref Drawing	QC-N-06
Date	2005-08-26	TROLLEY; NORMAL HEADROOM		
Drawn	SLEQDQCV	6 ROPE FALLS		
Company	R&M MATERIALS HANDLING, INC.	R&M MATERIALS HANDLING, INC. HOIST & CRANE PRODUCTS SPRINGFIELD, OHIO		
Part No.	D007206-A	1:13		
Issue	1	Folder		