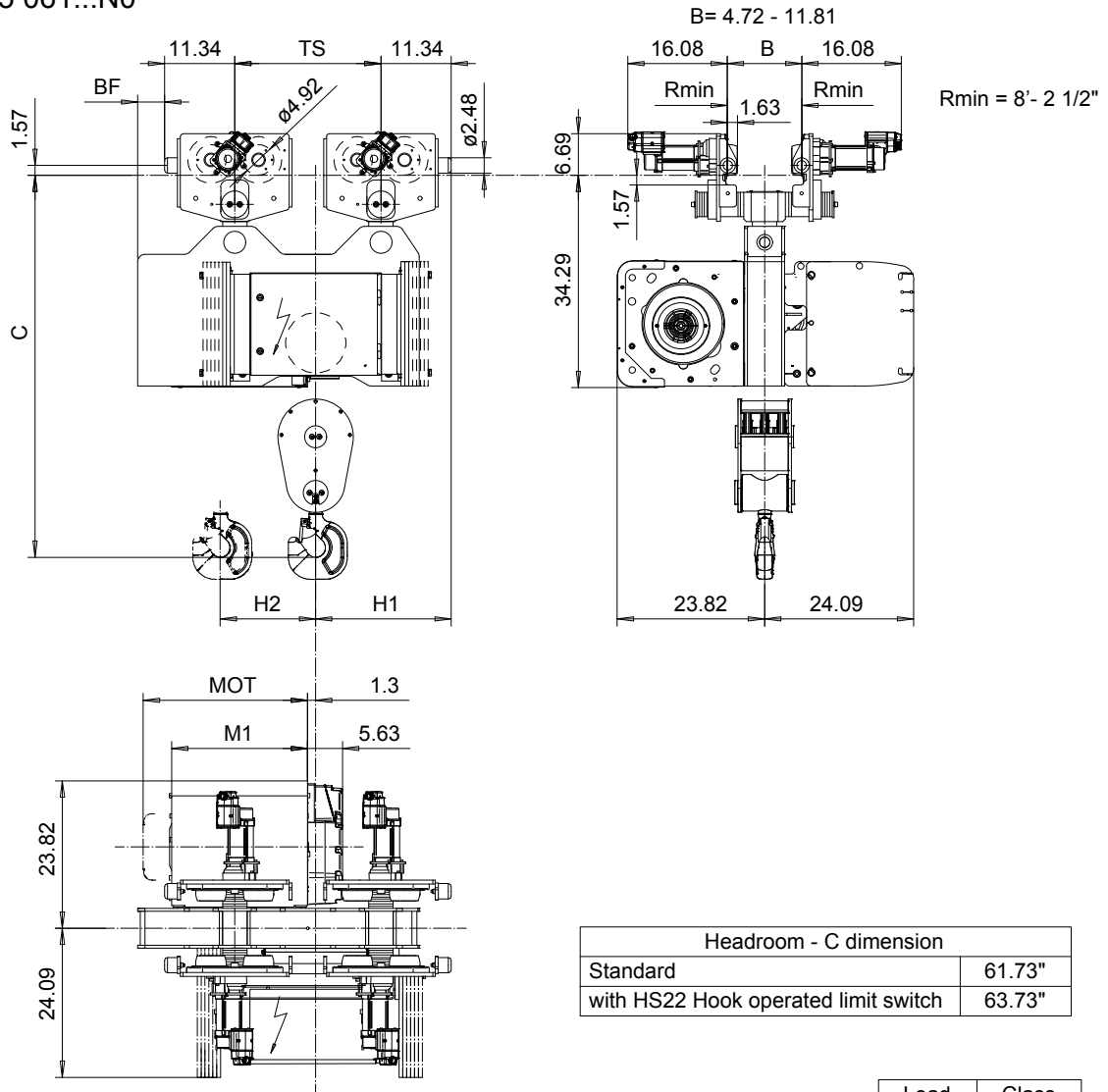


NORMAL HEADROOM, CURVED TRACK, 6 PART SINGLE

Hoist type:

SX5 061...N0

US-60Hz



Headroom - C dimension	
Standard	61.73"
with HS22 Hook operated limit switch	63.73"

Load (TON)	Class ASME
12	H4+
15	H4

Motor	P5	P6	P7	A5	S5	S7
MOT (in)	22.76	22.76	24.33	19.61	23.86	29.8
Weight (lb)	128	187	231	99	117	179

HOL	Length code	M1 (inch)	BF (inch)	TS (inch)	H1 (inch)	H2 (inch)	Approx. Weight (lb)
19'-8"	D	21.97	4.33	23.62	21.89	2.09	2447
26'-2"	E	26.69	4.33	23.62	21.89	3.07	2546
32'-9"	F	32.6	14.57	28.35	23.46	3.86	2745
42'-7"	G	40.08	14.57	28.35	23.46	5.2	2866

Approx. Weight calculated with P5 motor.

This document is the absolute property of R&M Materials Handling, Inc. This document must not be copied without the written permission of R&M Materials Handling, Inc. The contents thereof must not be disclosed to a third party nor be used for any unauthorized purpose. Contravention will be prosecuted.

ETVPH Design	ETVPH Cnd	Appt	Ref Drawing	QC-N-06
2005-08-26 Date	TROLLEY; NORMAL HEADROOM			1:13 Folder
SLEQDQCV Owner/Dept	CURVED TRACK, 6 ROPE FALLS			
R&M MATERIALS HANDLING INC.	R&M MATERIALS HANDLING, INC HOIST & CRANE PRODUCTS SPRINGFIELD, OHIO			Issue 1
D007207-A				