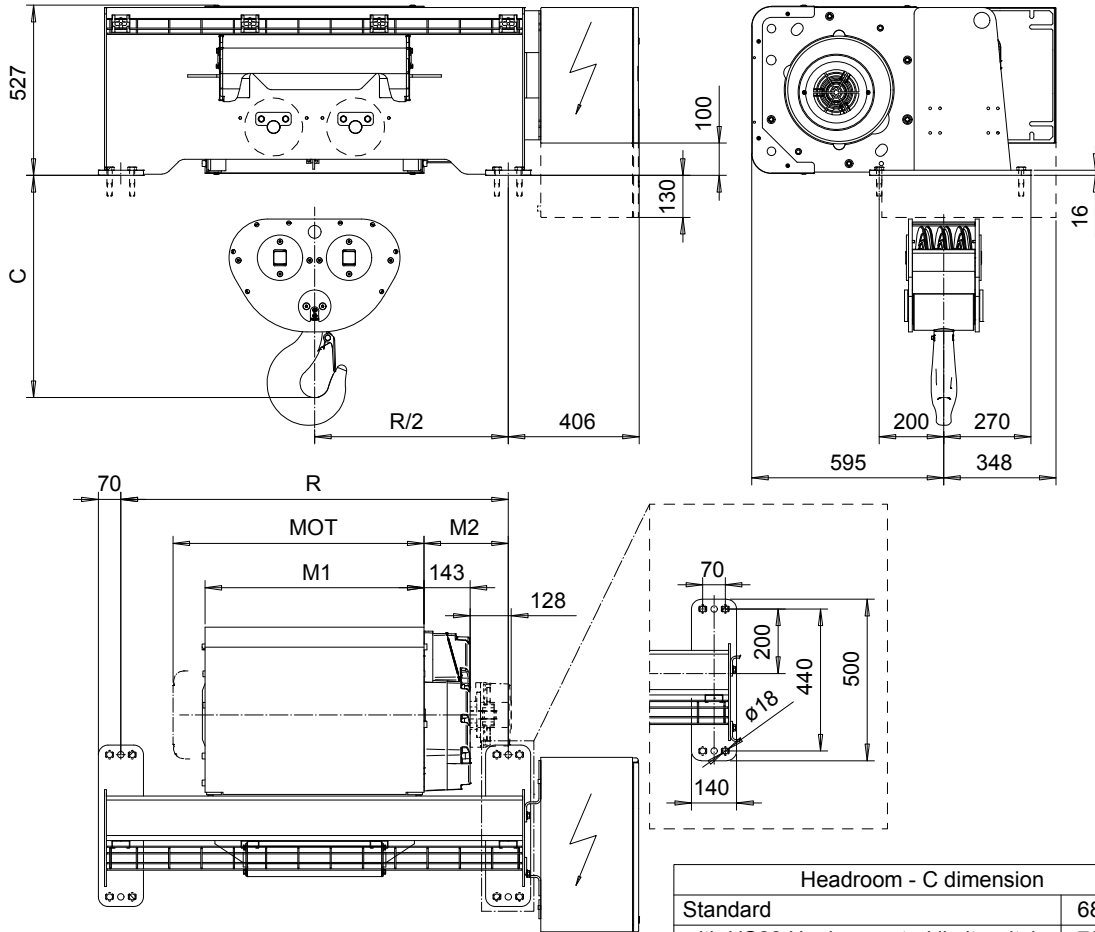


FOOT MOUNT, 6 PART DOUBLE

Hoist type:

SX5 062...F0

SI-60Hz



| Headroom - C dimension | |
|--------------------------------------|--------|
| Standard | 688 mm |
| with HS22 Hook operated limit switch | 738 mm |

| Motor | P5 | P6 | P7 | A5 | S5 | S7 |
|-------------|-----|-----|-----|-----|-----|-----|
| MOT (mm) | 578 | 578 | 618 | 498 | 606 | 757 |
| Weight (kg) | 58 | 85 | 105 | 45 | 53 | 81 |

| Load (kg) | Class |
|-----------|---------|
| | Fem/ISO |
| 12000 | 3m/M6 |
| 15000 | 2m/M5 |

| HOL (m) | Length code | M1 (mm) | M2 (mm) | R (mm) | Approx Weight (kg) |
|---------|-------------|---------|---------|--------|--------------------|
| 4 | E | 678 | 261 | 1200 | 600 |
| 6 | F | 828 | 186 | 1200 | 625 |
| 8 | G | 1018 | 91 | 1200 | 665 |
| 11 | H | 1268 | 216 | 1700 | 745 |
| 15 | J | 1618 | 191 | 2000 | 830 |

Brake is mounted on gearcase for drum length H and J.
Approx weight calculated with P5 motor.

This document is the absolute property of R&M Materials Handling, Inc. This document must not be copied without the written permission of R&M Materials Handling, Inc. The contents thereof must not be disclosed to a third party nor be used for any unauthorized purpose. Contravention will be prosecuted.

| | | | | |
|--------------------------------------|---|-----------|-------------|----------------|
| ETTPAL Design | ETTPAL Chd | Appd | Ref Drawing | QC-F-26 |
| 2002-08-30 Date | HOIST; FIXED | | | |
| SLEODOCV Owner Dept | 2x6 ROPE FALLS | | | |
| R&M MATERIALS HANDLING INC. | R&M MATERIALS HANDLING, INC. HOIST & CRANE PRODUCTS SPRINGFIELD, OHIO | D007246-A | | 1-10 Folder |
| | | | | Issue 2 |