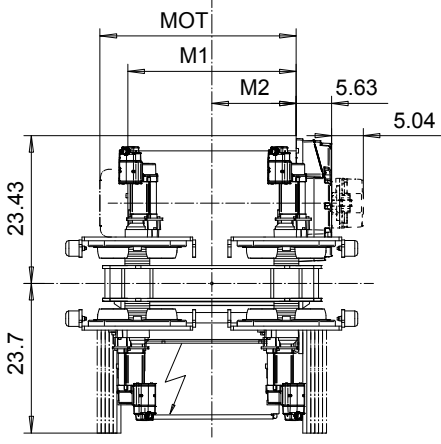
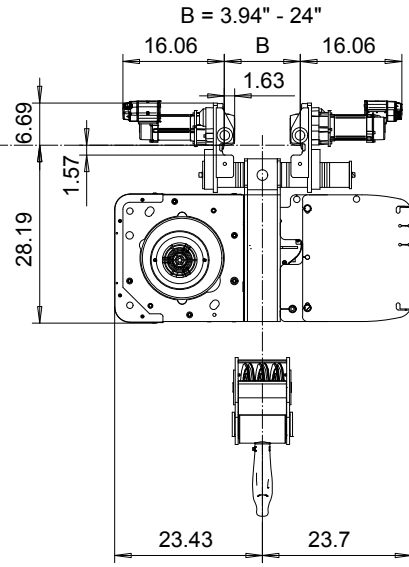
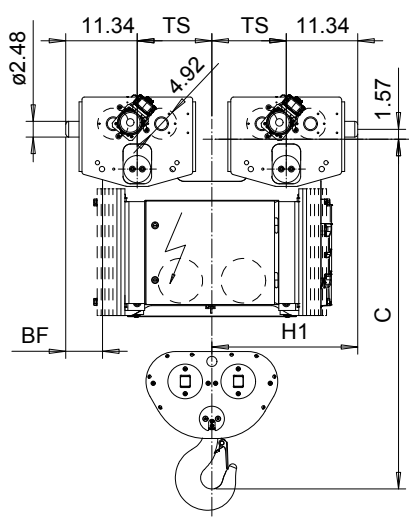


NORMAL HEADROOM, 6 PART DOUBLE
Hoist type:
SX5 062...N0

US-60Hz



Headroom - C dimension	
Standard	55.43"
with HS22 Hook operated limit switch	57.4"

Motor	P5	P6	P7	A5	S5	S7
MOT (in)	22.76	22.76	24.33	19.61	23.86	29.8
Weight (lb)	128	187	231	99	117	179

Load (TON)	Class ASME
12	H4+
15	H4

HOL (ft)	Length code	H1 (inch)	M1 (inch)	M2 (inch)	BF (inch)	TS (inch)	Approx. Weight (lb)
13'-1"	E	23.15	26.69	13.35	5.83	11.81	2183
19'-8"	F	23.15	32.6	16.3	5.83	11.81	2227
26'-2"	G	31.02	40.08	20.04	-1.65	19.69	2337
36'-1"	H	31.02	49.92	24.96	-1.65	19.69	2657
49'-2"	J	31.02	63.7	31.85	-1.65	19.69	2822

Approx. Weight calculated with P5 motor.
 Brake mounted on gearcase cover for Length code H and J.

This document is the absolute property of R&M Materials Handling, Inc. This document must not be copied without the written permission of R&M Materials Handling, Inc. The contents thereof must not be disclosed to a third party nor be used for any unauthorized purpose. Contravention will be prosecuted.

ETVPH Design	ETVPH Chd	Appt	Ref Drawing	QC-N-26
2005-08-26 Date	TROLLEY; NORMAL HEADROOM			1:13
SLEQDQCV Drawn (App)	2x6 ROPE FALLS			Folder
R&M MATERIALS HANDLING INC.	R&M MATERIALS HANDLING, INC HOIST & CRANE PRODUCTS SPRINGFIELD, OHIO	D007223-A		Issue 1