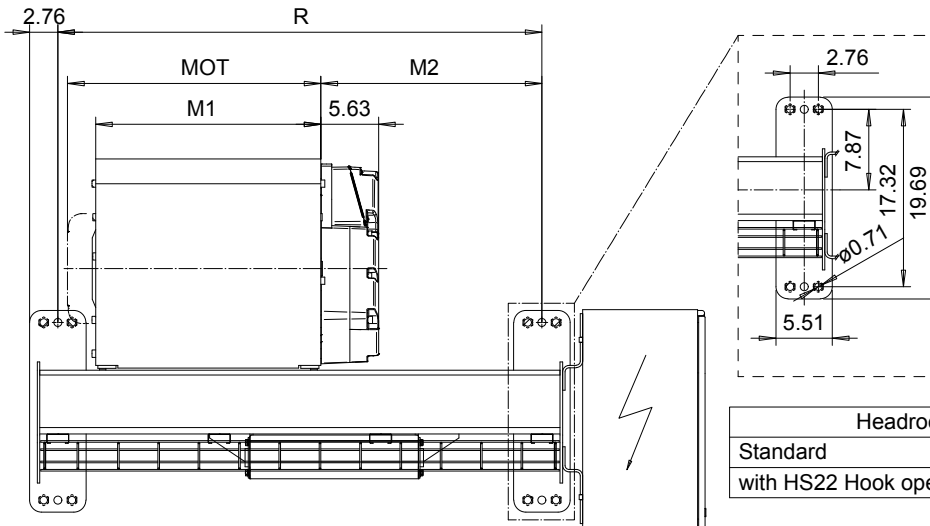
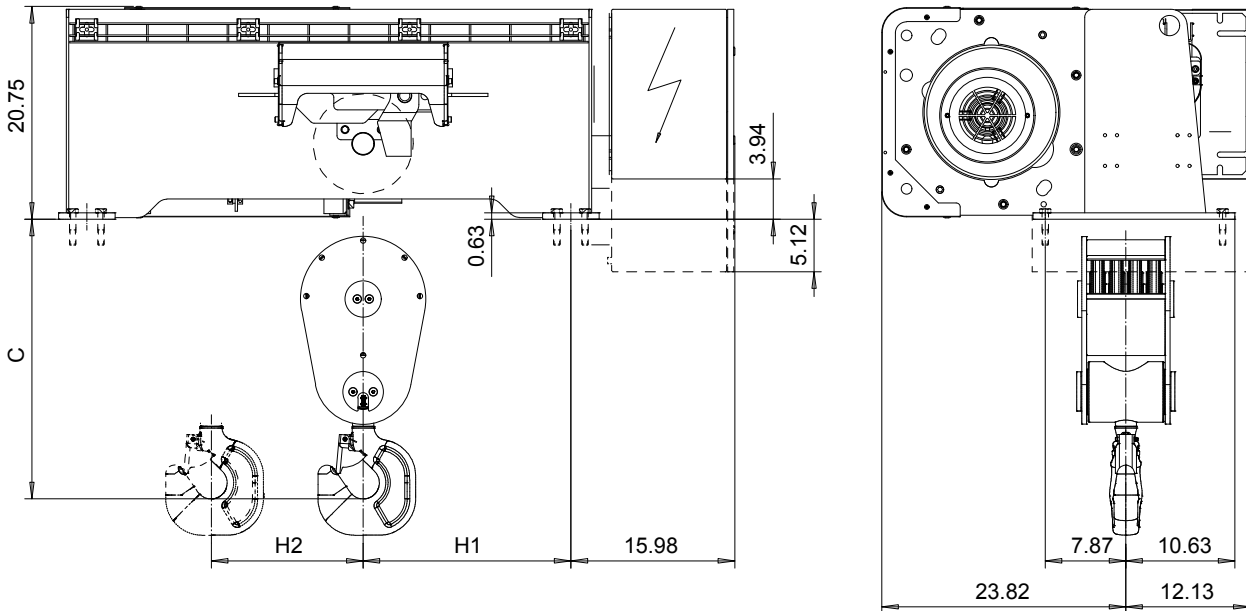


**FOOT MOUNT, 8 PART SINGLE**  
Hoist type:  
SX5 081...F0

US-60Hz



| Headroom - C dimension               |        |
|--------------------------------------|--------|
| Standard                             | 27.28" |
| with HS22 Hook operated limit switch | 29.28" |

| Motor       | P5    | P6    | P7    | A5    | S5    | S7   |
|-------------|-------|-------|-------|-------|-------|------|
| MOT (in)    | 22.76 | 22.76 | 24.33 | 19.61 | 23.86 | 29.8 |
| Weight (lb) | 128   | 187   | 231   | 99    | 117   | 179  |

| Load (TON) | Class ASME |
|------------|------------|
| 15         | H4         |
| 20         | H3         |

| HOL    | Length code | M1 (inch) | M2 (inch) | R (inch) | H1 (inch) | H2 (inch) | Approx. Weight (lb) |
|--------|-------------|-----------|-----------|----------|-----------|-----------|---------------------|
| 14'-9" | D           | 21.97     | 21.57     | 47.24    | 20.27     | 1.73      | 1323                |
| 19'-8" | E           | 26.69     | 24.72     | 55.12    | 23.43     | 2.09      | 1400                |
| 26'-2" | F           | 32.6      | 30.63     | 66.93    | 29.33     | 3         | 1521                |
| 32'-9" | G           | 40.08     | 34.96     | 78.74    | 33.66     | 3.86      | 1653                |

Approx weight calculated with P5 motor

This document is the absolute property of R&M Materials Handling, Inc. This document must not be copied without the written permission of R&M Materials Handling, Inc. The contents thereof must not be disclosed to a third party nor be used for any unauthorized purpose. Contravention will be prosecuted.

|                                      |  |           |             |            |
|--------------------------------------|--|-----------|-------------|------------|
| ETTPAL<br>Design                     | ETTPAL<br>Chd  | Appd      | Ref Drawing | QC-F-08    |
| 2002-08-30<br>Date                   | HOIST; FIXED   |           |             | 1:8        |
| SLEODOCV<br>Owner Dept               | 8 ROPE FALLS   |           |             | Folder     |
| R&M<br>MATERIALS<br>HANDLING<br>INC. | R&M MATERIALS HANDLING, INC<br>HOIST & CRANE PRODUCTS<br>SPRINGFIELD, OHIO | D007243-A |             | Issue<br>2 |