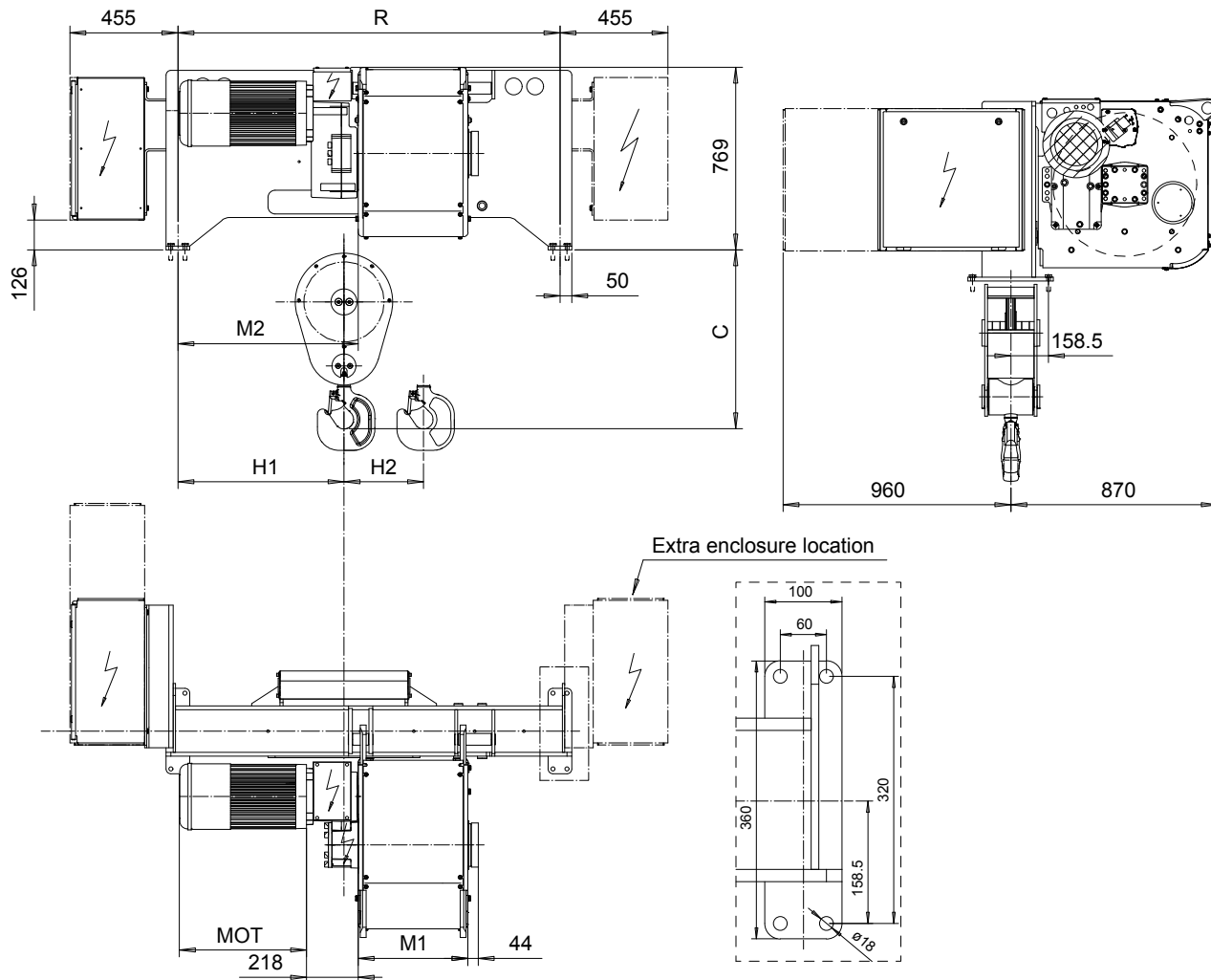


# FOOT MOUNT, 2 PART SINGLE

Hoist type:

SX6 021...F0

SI-60Hz



| HOL  | HOL* | Length | R    | M1   | M2   | H1   | H2   | Approx Weight |
|------|------|--------|------|------|------|------|------|---------------|
| (m)  | (m)  | code   | (mm) | (mm) | (mm) | (mm) | (mm) | (kg)          |
| 15.5 | 10   | C      | 1610 | 462  | 760  | 700  | 139  | 1200          |
| 21   | 15.5 | D      | 1610 | 562  | 760  | 700  | 188  | 1300          |
| 28   | 22.5 | E      | 1840 | 682  | 590  | 650  | 251  | 1300          |
| 36   | 30.5 | F      | 1840 | 832  | 590  | 650  | 322  | 1400          |
| 47   | 41.5 | G      | 2350 | 1022 | 670  | 730  | 421  | 1500          |
| 61   | 55.5 | H      | 2350 | 1272 | 670  | 730  | 546  | 1600          |
| 80.5 | 75   | J      | 2759 | 1622 | 840  | 690  | 721  | 1900          |
| 97   | 91.5 | K      | 2759 | 1922 | 840  | 690  | 868  | 2000          |

HOL\* with optional drum brake Weight of drum brake is 80 kg.

| Motor       | P6  | P7  | P8  | A7  | S7  | S8  | SA  |
|-------------|-----|-----|-----|-----|-----|-----|-----|
| MOT (mm)    | 536 | 576 | 711 | 536 | 715 | 763 | 803 |
| Weight (kg) | 85  | 105 | 106 | 71  | 81  | 97  | 120 |

| Load  | Class   |
|-------|---------|
| (kg)  | Fem/ISO |
| 6300  | 3m/M6   |
| 8000  | 2m/M5   |
| 10000 | 1Am/M4  |

| Headroom - C dimension               |        |
|--------------------------------------|--------|
| Standard                             | 754 mm |
| with HS22 Hook operated limit switch | 804 mm |

Hoist weight calculated with P6 motor weight and without drum brake.

This document is the absolute property of R&M Materials Handling, Inc. This document must not be copied without the written permission of R&M Materials Handling, Inc. The contents thereof must not be disclosed to a third party nor be used for any unauthorized purpose. Contravention will be prosecuted.

|                                      |  |           |             |                  |
|--------------------------------------|--|-----------|-------------|------------------|
| ETTPAL<br>Design                     | ETTPAL<br>Chd  | Appd      | Ref Drawing | QD-F-02          |
| 2002-09-02<br>Date                   | HOIST; FIXED   |           |             | 1:13             |
| SLEODOCV<br>Owner Dept               | 2 ROPE FALLS   |           |             | Folder           |
| R&M<br>MATERIALS<br>HANDLING<br>INC. | R&M MATERIALS HANDLING INC.<br>HOIST & CRANE PRODUCTS<br>SPRINGFIELD, OHIO | D006936-A |             | Issue<br>11/2013 |