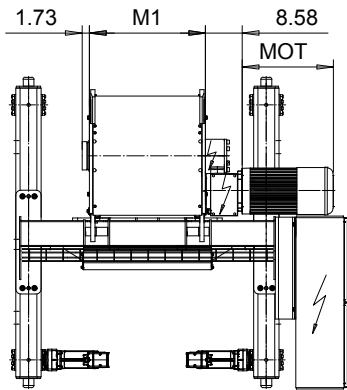
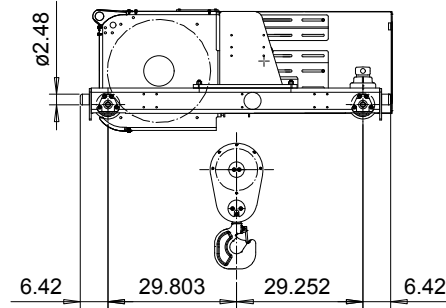
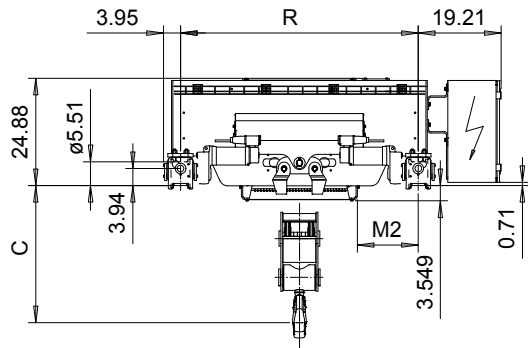


DOUBLE GIRDER, MEDIUM, 2 PART DOUBLE

Hoist type:

SX6 022...D0

US-60Hz



HOL	HOL*	Length	M1	M2	Min R	Max R	Approx Weight
(ft)	(ft)	code	(inch)	(inch)	(ft)	(ft)	(lb)
49'-2"	27'-11"	E	26.85	14.13	4'-7 1/8"	6'-6 3/4"	2888
68'-11"	47'-7"	F	32.76	17.09	5'-6 15/16"	7'-10 1/2"	3042
93'-6"	72'-2"	G	40.24	13.35	5'-6 15/16"	8'-10 5/16"	3175
124'-8"	103'-4"	H	50.08	14.33	6'-6 3/4"	10'-2"	3439
169'-0"	147'-7"	J	63.86	15.31	7'-10 1/2"	11'-1 7/8"	3792
208'-4"	187'-0"	K	75.67	15.31	8'-10 5/16"	11'-1 7/8"	4167
252'-7"	231'-4"	L	89.49	16.3	10'-2"	11'-1 7/8"	4608
285'-5"	264'-1"	M	99.29	17.28	11'-1 7/8"	12'-5 5/8"	4938
323'-2"	301'-10"	N	111.1	19.25	12'-5 5/8"	13'-9 3/8"	5357

HOL* with optional drum brake Weight of drum brake is 176 lb.

Motor	P6	P7	P8	A7	S7	S8	SA
MOT (in)	21.1	22.7	28	21.1	28.1	30	31.6
Weight (lb)	187	231	234	157	179	214	265

Load	Class
(TON)	ASME
6	H4+
7 1/2	H4
10	H3

Headroom - C dimension	
Standard	32"
with HS22 Hook operated limit switch	34"

Standard rail gauges are 4'-7 1/8", 5'-6 15/16", 6'-6 3/4", 7'-10 1/2", 8'-10 5/16", 10'-2", 11'-1 7/8", 12'-5 5/8" and 13'-9 3/8".

M2 is listed at Min R.

Hoist weight calculated at Min R, with P6 motor, without drum brake.

This document is the absolute property of R&M Materials Handling, Inc. This document must not be copied without the written permission of R&M Materials Handling, Inc. The contents thereof must not be disclosed to a third party nor be used for any unauthorized purpose. Contravention will be prosecuted.

ETTPAL Design	ETTPAL Chd	Appd	Ref Drawing	QD-M-22
2002-09-02 Date	TROLLEY; DOUBLE GIRDER			1:19
SLEODOCV Owner Dept	MEDIUM, 2x2 ROPE FALLS			Folder
R&M MATERIALS HANDLING INC.	R&M MATERIALS HANDLING, INC. HOIST & CRANE PRODUCTS SPRINGFIELD, OHIO	D006651-A		Issue 4