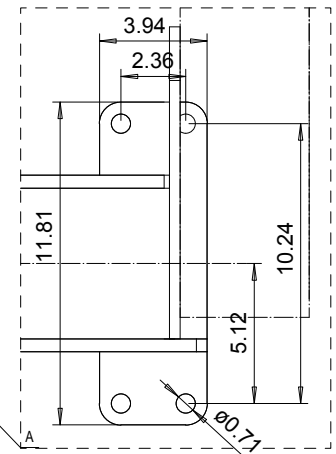
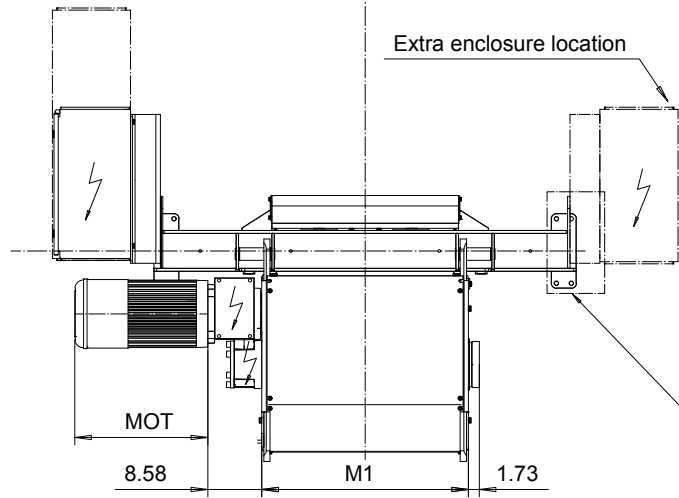
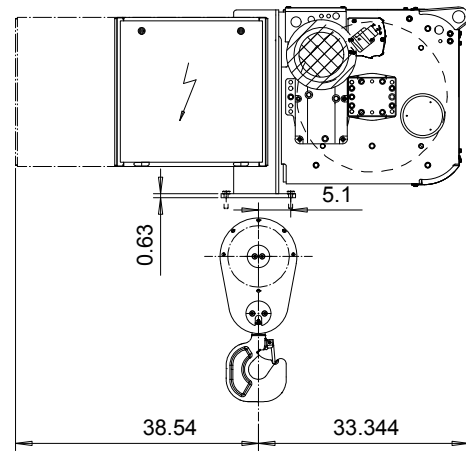
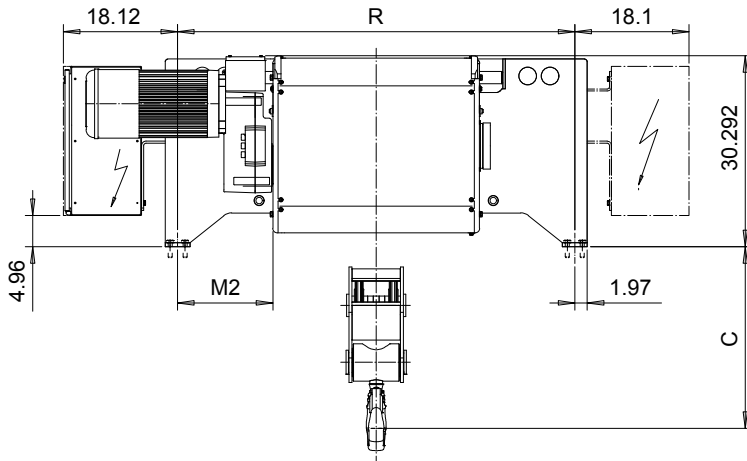


FOOT MOUNT, 2 PART DOUBLE

Hoist type:

SX6 022...F0

US-60Hz



| HOL (ft) | HOL* (ft) | Length code | R (inch) | M1 (inch) | M3 (inch) | Approx Weight (lb) |
|----------|-----------|-------------|----------|-----------|-----------|--------------------|
| 49'-2" | 27'-11" | E | 62.99 | 26.85 | 18.07 | 2646 |
| 68'-11" | 47'-7" | F | 62.99 | 32.75 | 15.12 | 2866 |
| 93'-6" | 72'-2" | G | 62.99 | 40.23 | 11.38 | 2866 |
| 124'-8" | 103'-4" | H | 86.61 | 50.07 | 18.27 | 3307 |
| 169'-0" | 147'-7" | J | 86.61 | 63.85 | 11.38 | 3527 |
| 208'-4" | 187'-0" | K | 88.58 | 75.66 | 6.46 | 3968 |
| 252'-7" | 231'-4" | L | 88.58 | 89.44 | -0.39 | 4409 |
| 285'-5" | 264'-1" | M | 110.24 | 99.29 | 5.47 | 4850 |
| 323'-2" | 301'-10" | N | 110.24 | 111.10 | -0.39 | 5071 |

HOL* with optional drum brake Weight of drum brake is 176 lb.

| Motor | P6 | P7 | P8 | A7 | S7 | S8 | SA |
|-------------|------|------|-----|------|------|-----|------|
| MOT (in) | 21.1 | 22.7 | 28 | 21.1 | 28.1 | 30 | 31.6 |
| Weight (lb) | 187 | 231 | 234 | 157 | 179 | 214 | 265 |

| Load (TON) | Class ASME |
|------------|------------|
| 6 | H4+ |
| 7 1/2 | H4 |
| 10 | H3 |

| Headroom - C dimension | |
|--------------------------------------|-----|
| Standard | 29" |
| with HS22 Hook operated limit switch | 31" |

Hoist weight calculated with P6 motor weight and without drum brake.

This document is the absolute property of R&M Materials Handling, Inc. This document must not be copied without the written permission of R&M Materials Handling, Inc. The contents thereof must not be disclosed to a third party nor be used for any unauthorized purpose. Contravention will be prosecuted.

| | | | |
|-----------------------------|--|-----------|-------------|
| ETTPAL Design | KHHMKH | Appd | Ref Drawing |
| 2002-09-03 Date | HOIST; FIXED | | |
| SLEQDOCV Owner Dept | 2x2 ROPE FALLS | | |
| R&M MATERIALS HANDLING INC. | R&M MATERIALS HANDLING, INC HOIST & CRANE PRODUCTS SPRINGFIELD, OHIO | D006940-A | |

1:13
Folder
Issue
2/2016