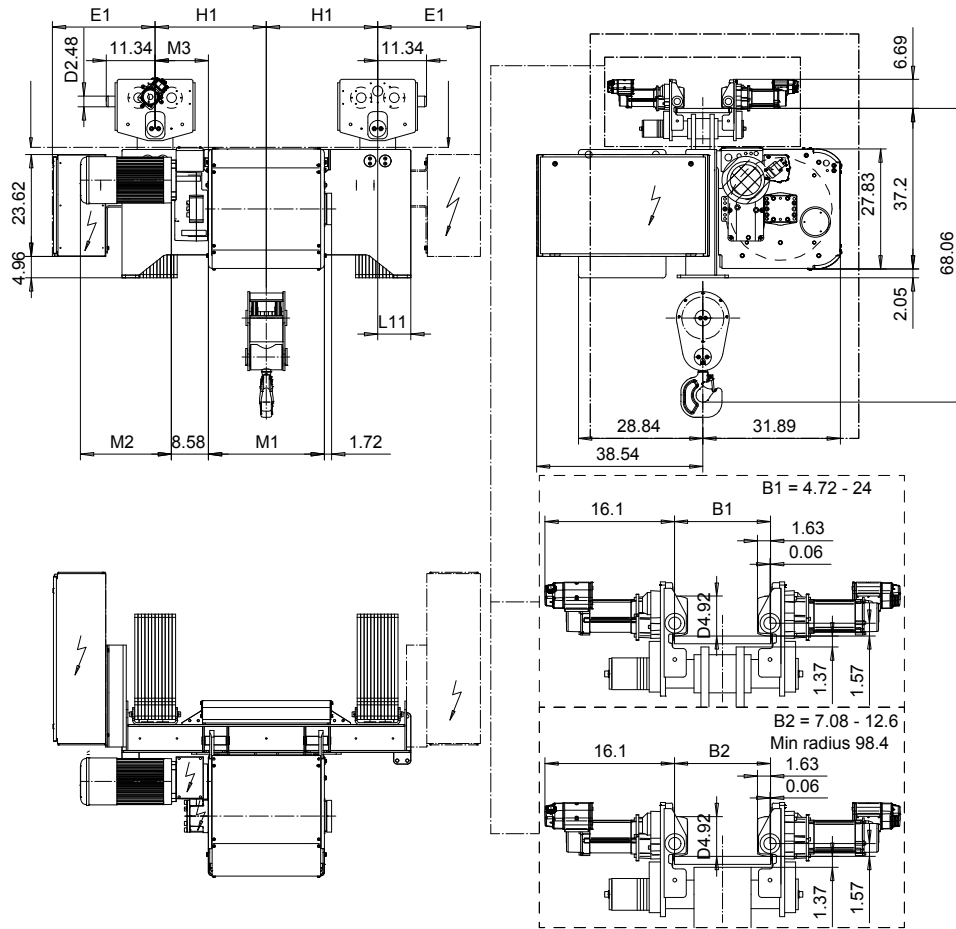


NORMAL HEADROOM, 2 PART DOUBLE
Hoist type:
SX6 022...N0

US-60Hz



HOL	HOL*	Length	E1	M1	M3	H1	L11	Wgt - Std Ttry	Wgt - Swivel Ttry
(ft)	(ft)	code	(inch)	(inch)	(inch)	(inch)	(inch)	(lb)	(lb)
49'-2"	27'-11"	E	23.82	26.85	12.36	25.79	7.68	4630	5071
68'-11"	47'-7"	F	23.82	32.75	9.41	25.79	7.68	4850	5291
93'-6"	72'-2"	G	23.82	40.23	5.67	25.79	7.68	5291	5732
124'-8"	103'-4"	H	23.82	50.07	12.56	37.6	7.68	5762	6393
169'-0"	147'-7"	J	23.82	63.85	5.67	37.6	7.68	6393	6834
208'-4"	187'-0"	K	36.42	75.66	-12.05	25.79	20.47	6834	7495
252'-7"	231'-4"	L	36.42	89.44	-18.94	25.79	20.47	7496	8157
285'-5"	264'-1"	M	35.43	99.29	-12.05	37.6	19.49	8157	9039
323'-2"	301'-1"	N	35.43	111.10	-17.95	37.6	19.49	8598	9480

Note: Hoist weight when B = 12"
 HOL* with optional drum brake Weight of drum brake 176 lbs

Load	Class
(TON)	ASME
6	H4+
7 1/2	H4
10	H3

Motor	P6	P7	P8	A7	S7	S8	SA
M2 (inch)	21.10	22.8	28	21.1	28.2	30	31.62
Weight (lb)	188	232	234	157	179	214	265

This document is the absolute property of R&M Materials Handling, Inc. This document must not be copied without the written permission of R&M Materials Handling, Inc. The contents thereof must not be disclosed to a third party nor be used for any unauthorized purpose. Contravention will be prosecuted.

CSDTLI Design	KHHMKH Chd	Appd	Ref Drawing	QD-N-22
2010-11-30 Date	TROLLEY; NORMAL HEADROOM			1 of 19 Folder
SLEODOCV Owner Dept	2X2 ROPE FALLS			
R&M MATERIALS HANDLING INC.	R&M MATERIALS HANDLING, INC HOIST & CRANE PRODUCTS SPRINGFIELD, OHIO	D006895-A		Issue 01/2017