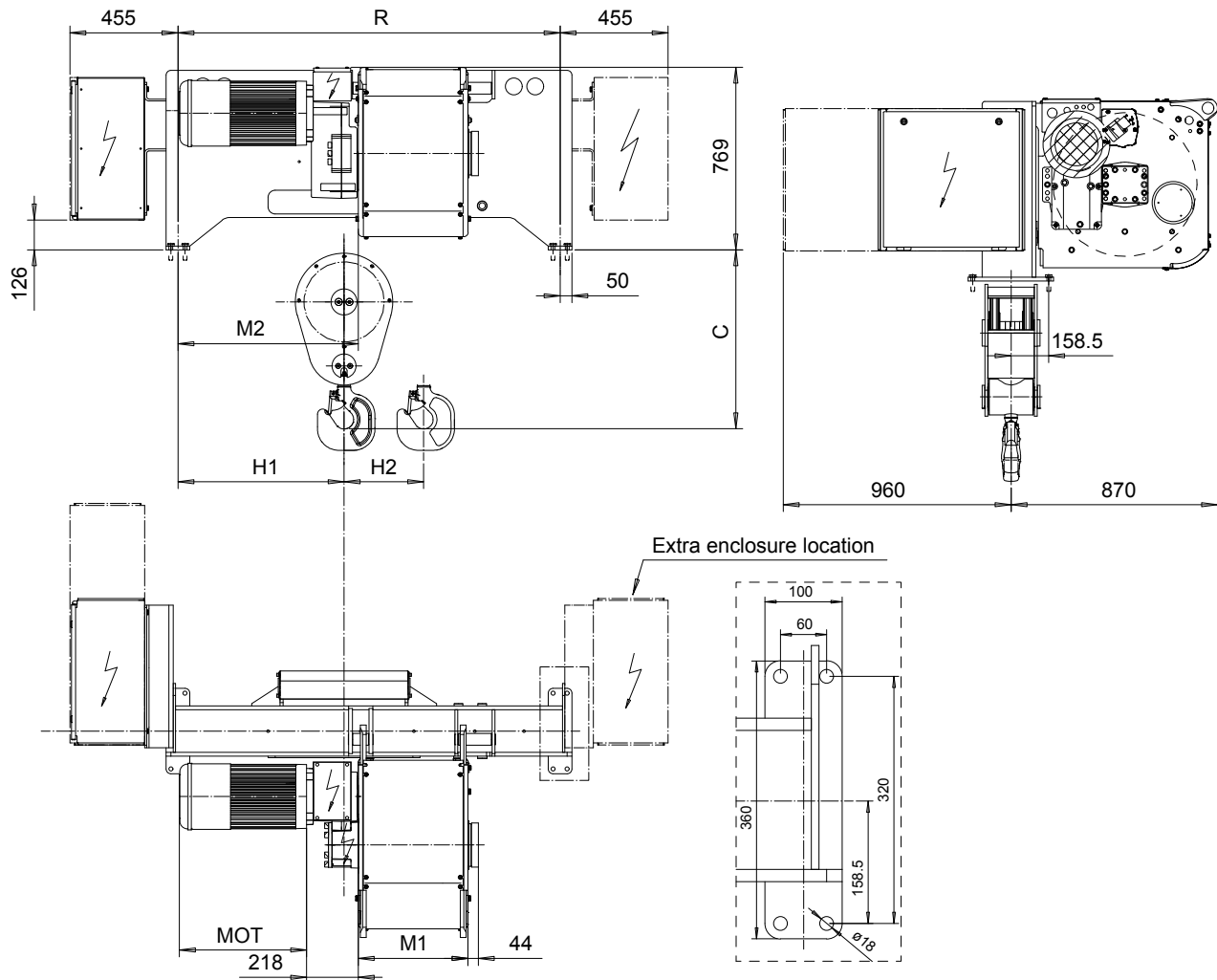


FOOT MOUNT, 4 PART SINGLE

Hoist type:

SX6 041...F0

SI-60Hz



HOL (m)	HOL* (m)	Length code	R (mm)	M1 (mm)	M2 (mm)	H1 (mm)	H2 (mm)	Approx Weight (kg)
7.5	4.5	C	1610	462	760	700	69	1300
10.5	7.5	D	1610	562	760	700	94	1300
14	11	E	1840	682	590	650	125	1400
18	15	F	1840	832	590	650	161	1400
23.5	20.5	G	2350	1022	670	730	210	1600
30.5	27.5	H	2350	1272	670	730	273	1700
40	37	J	2759	1622	840	690	360	1900
48.5	45.5	K	2759	1922	840	690	434	2100

HOL* with optional drum brake Weight of drum brake is 80 kg.

Motor	P6	P7	P8	A7	S7	S8	SA
MOT (mm)	536	576	711	536	715	763	803
Weight (kg)	85	105	106	71	81	97	120

Load (kg)	Class Fem/ISO
12500	3m/M6
16000	2m/M5
20000	1Am/M4

Headroom - C dimension	
Standard	754 mm
with HS22 Hook operated limit switch	804 mm

Hoist weight calculated with P6 motor weight and without drum brake.

This document is the absolute property of R&M Materials Handling, Inc. This document must not be copied without the written permission of R&M Materials Handling, Inc. The contents thereof must not be disclosed to a third party nor be used for any unauthorized purpose. Contravention will be prosecuted.

ETTPAL Design	ETTPAL Chd	Appd	Ref Drawing	QD-F-04
2002-09-02 Date	HOIST; FIXED			1:13
SLEODOCV Owner Dept	4 ROPE FALLS			Folder
R&M MATERIALS HANDLING INC.	R&M MATERIALS HANDLING INC. HOIST & CRANE PRODUCTS SPRINGFIELD, OHIO	D006937-A		Issue 11/2013