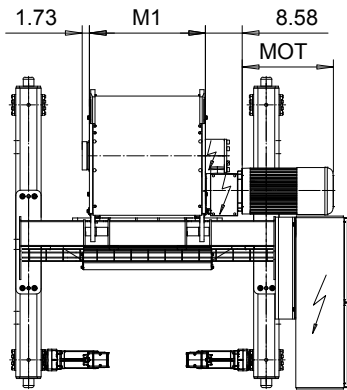
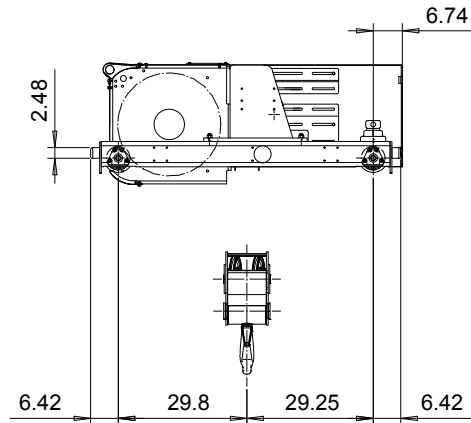
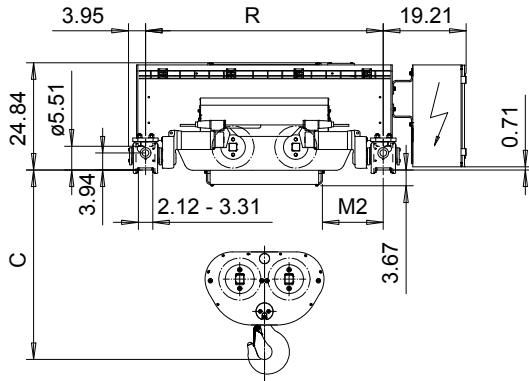


DOUBLE GIRDER, MEDIUM, 4 PART DOUBLE

Hoist type:
SX6 042...D0

US-60Hz



HOL (ft)	HOL* (ft)	Length code	M1 (inch)	M2 (inch)	Min R (ft)	Max R (ft)	Approx Weight (lb)
24'-7"	N.A.	E	26.85	14.13	4'-7 1/8"	6'-6 3/4"	3042
34'-5"	24'-7"	F	32.76	17.09	5'-6 15/16"	7'-10 1/2"	3197
45'-11"	36'-1"	G	40.24	13.35	5'-6 15/16"	8'-10 5/16"	3351
62'-4"	52'-6"	H	50.08	14.33	6'-6 3/4"	10'-2"	3616
83'-8"	73'-10"	J	63.86	15.31	7'-10 1/2"	11'-1 7/8"	3968
103'-4"	93'-6"	K	75.67	15.31	8'-10 5/16"	11'-1 7/8"	4343
126'-4"	116'-6"	L	89.49	16.3	10'-2"	11'-1 7/8"	4784
142'-8"	132'-11"	M	99.29	17.28	11'-1 7/8"	12'-5 5/8"	5115
160'-10"	150'-11"	N	111.1	19.25	12'-5 5/8"	13'-9 3/8"	5534

HOL* with optional drum brake Weight of drum brake is 176 lb.

Motor	P6	P7	P8	A7	S7	S8	SA
MOT (in)	21.1	22.7	28	21.1	28.1	30	31.6
Weight (lb)	187	231	234	157	179	214	265

Load (TON)	Class ASME
12 1/2	H4+
15	H4
20	H3

Headroom - C dimension	
Standard	44"
with HS22 Hook operated limit switch	46"

Standard rail gauges are 4'-7 1/8", 5'-6 15/16", 6'-6 3/4", 7'-10 1/2", 8'-10 5/16", 10'-2", 11'-1 7/8", 12'-5 5/8" and 13'-9 3/8".

M2 is listed at Min R.

Hoist weight calculated at Min R, with P6 motor, without drum brake.

This document is the absolute property of R&M Materials Handling, Inc. This document must not be copied without the written permission of R&M Materials Handling, Inc. The contents thereof must not be disclosed to a third party nor be used for any unauthorized purpose. Contravention will be prosecuted.

ETTPAL Design	ETTPAL Chd	Appd	Ref Drawing	QD-M-24
2002-09-02 Date	TROLLEY; DOUBLE GIRDER			1:19
SLEODOCV Owner Dept	MEDIUM, 2x4 ROPE FALLS			Folder
R&M MATERIALS HANDLING INC.	R&M MATERIALS HANDLING, INC HOIST & CRANE PRODUCTS SPRINGFIELD, OHIO	D006652-A		Issue 4