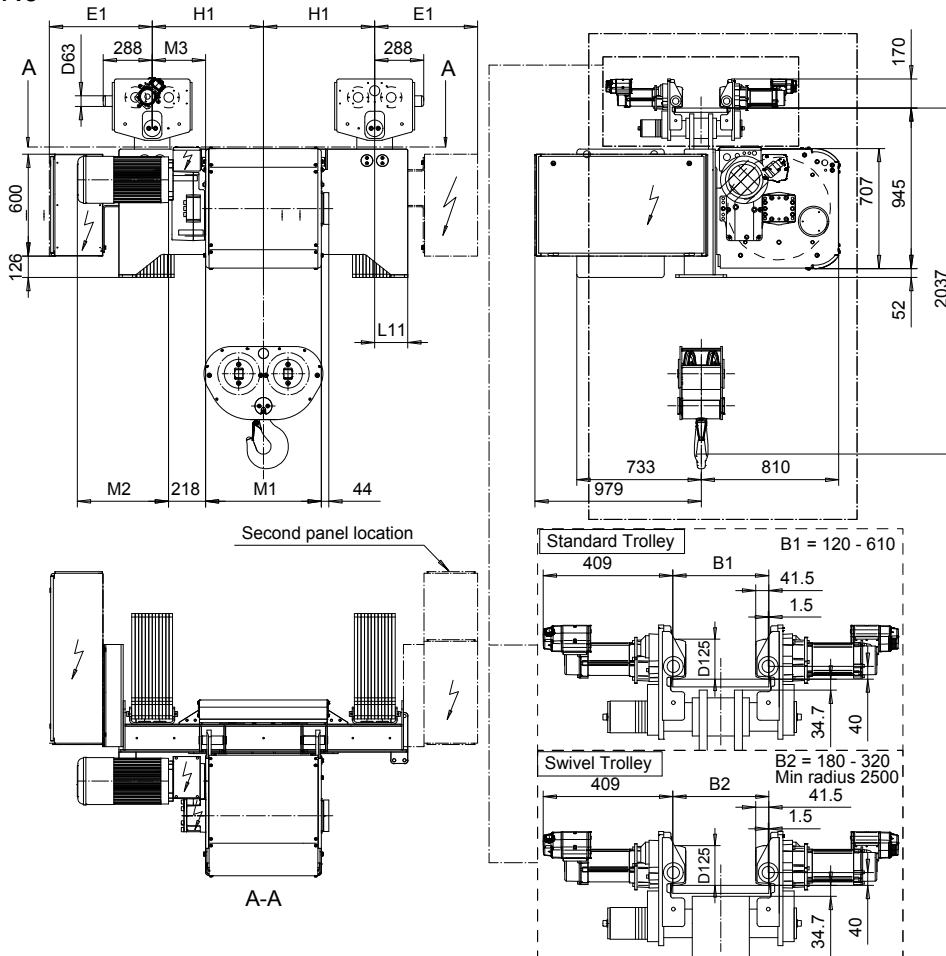


**NORMAL HEADROOM, 4 PART DOUBLE**

Hoist type:

SX6 042...N0

SI-50Hz



HOL	HOL*	Length	E1	M1	M3	H1	L11	Wgt - Std Trolley	Wgt - Swivel Trolley
(m)	(m)	code	(mm)	(mm)	(mm)	(mm)	(mm)	(kg)	(kg)
7.5	N.A.	E	605	682	314	655	195	2100	2300
10.5	7.5	F	605	832	239	655	195	2200	2400
14	11	G	605	1022	144	655	195	2400	2600
19	16	H	605	1272	319	955	195	2600	2900
25.4	22.5	J	605	1622	144	955	195	2900	3100
31.5	28.5	K	925	1922	-306	655	520	3100	3400
38.5	35.5	L	925	2272	-481	655	520	3400	3700
43.5	40.5	M	900	2522	-306	955	495	3700	4100
49	46	N	900	2822	-456	955	495	3900	4300

Note: Hoist weight when B = 205 mm

HOL\* with optional drum brake Weight of drum brake 80 kg

Load	Class
(kg)	Fem/ISO
12500	3m/M6
16000	2m/M5
20000	1Am/M4

Motor	P6	P7	P8	A7	S7	S8	SA
M2 (mm)	536	576	711	536	715	763	803
Weight (kg)	85	105	106	71	81	97	120

This document is the absolute property of R&M Materials Handling, Inc. This document must not be copied without the written permission of R&M Materials Handling, Inc. The contents thereof must not be disclosed to a third party nor be used for any unauthorized purpose. Contravention will be prosecuted.

CSDTLI Design	KHHMKH Chd	Appd	Ref Drawing	QD-N-24
2010-11-30 Date	TROLLEY; NORMAL HEADROOM			1 of 19 Folder
SLEODOCV Owner Dept	2x4 ROPE FALLS			
R&M MATERIALS HANDLING INC.	R&M MATERIALS HANDLING, INC. HOIST & CRANE PRODUCTS SPRINGFIELD, OHIO	D006896-A		Issue 2/2016