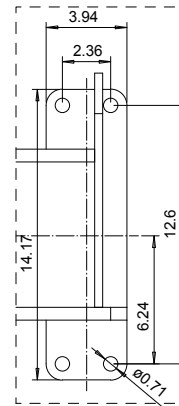
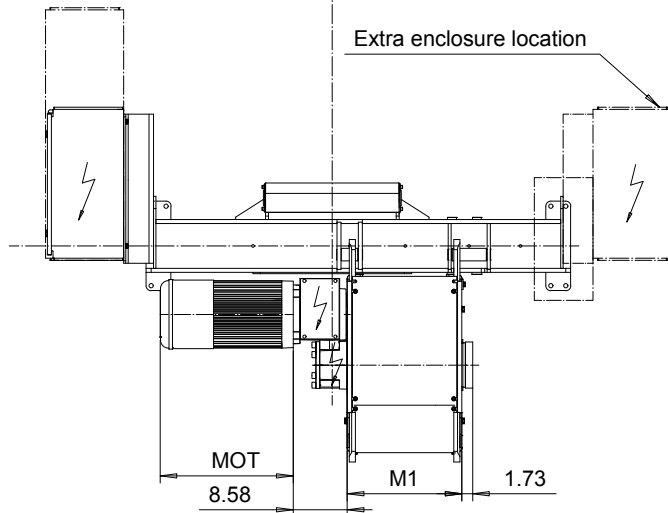
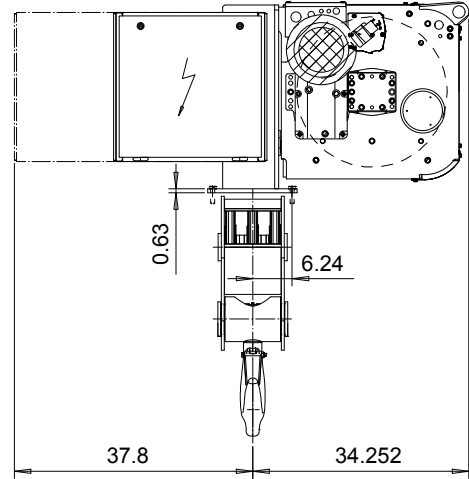
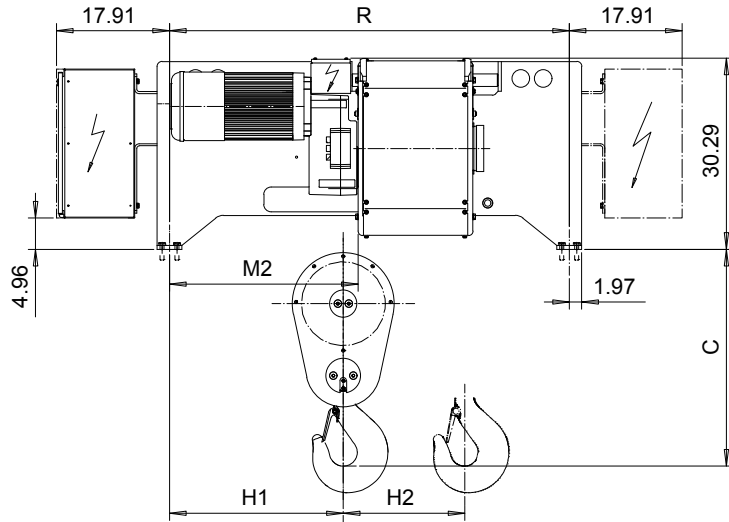


FOOT MOUNT, 6 PART SINGLE

Hoist type:

SX6 061...F0

US-60Hz



HOL (ft)	HOL* (ft)	Length code	R (inch)	M1 (inch)	M2 (inch)	H1 (inch)	H2 (inch)	Approx Weight (lb)
16'-4"	9'-10"	C	63.38	18.19	29.92	27.56	1.81	2866
22'-11"	18'-1"	D	63.38	22.13	29.92	27.56	2.48	3087
29'-6"	24'-7"	E	72.44	26.85	23.23	20.59	3.31	3307
39'-4"	32'-9"	F	72.44	32.75	23.23	20.59	4.21	3307
50'-10"	44'-3"	G	92.52	40.23	26.38	28.74	5.51	3527
65'-7"	60'-8"	H	92.52	50.07	26.38	28.74	7.17	3968
86'-11"	80'-4"	J	108.62	63.85	33.07	27.16	9.45	4409
105'-0"	98'-5"	K	108.62	75.66	33.07	27.16	11.38	4630

HOL* with optional drum brake Weight of drum brake is 176 lb.

Motor	P6	P7	P8	A7	S7	S8	SA
MOT (in)	21.1	22.7	28	21.1	28.1	30	31.6
Weight (lb)	187	231	234	157	179	214	265

Load (TON)	Class ASME
20	H4+
25	H4
30	H3

Headroom - C dimension	
Standard	34.4"
with HS22 Hook operated limit switch	36.4"

Hoist weight calculated with P6 motor weight and without drum brake.

This document is the absolute property of R&M Materials Handling, Inc. This document must not be copied without the written permission of R&M Materials Handling, Inc. The contents thereof must not be disclosed to a third party nor be used for any unauthorized purpose. Contravention will be prosecuted.

ETTPAL Design	ETTPAL Chd	Appd	Ref Drawing	QD-F-06
2002-09-02 Date	HOIST; FIXED			1:13
SLEODOCV Owner Dept	6 ROPE FALLS			Folder
R&M MATERIALS HANDLING INC.	R&M MATERIALS HANDLING INC. HOIST & CRANE PRODUCTS SPRINGFIELD, OHIO			Issue 11/2013
D006938-A				