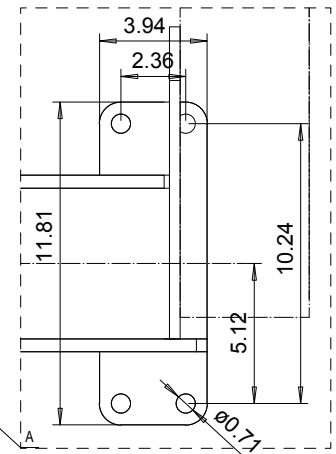
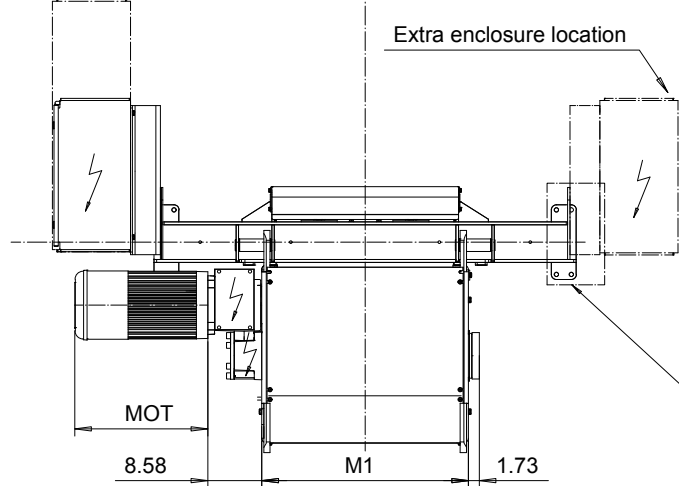
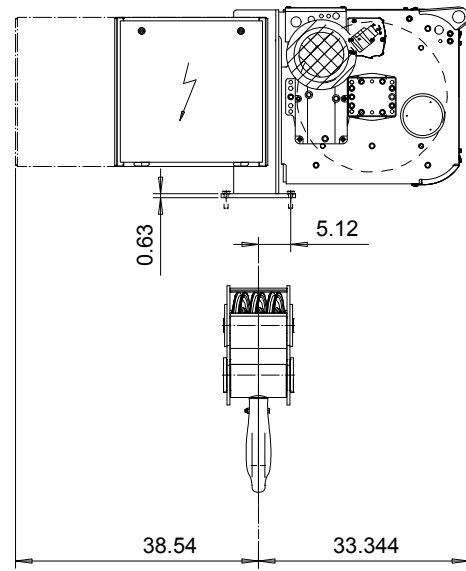
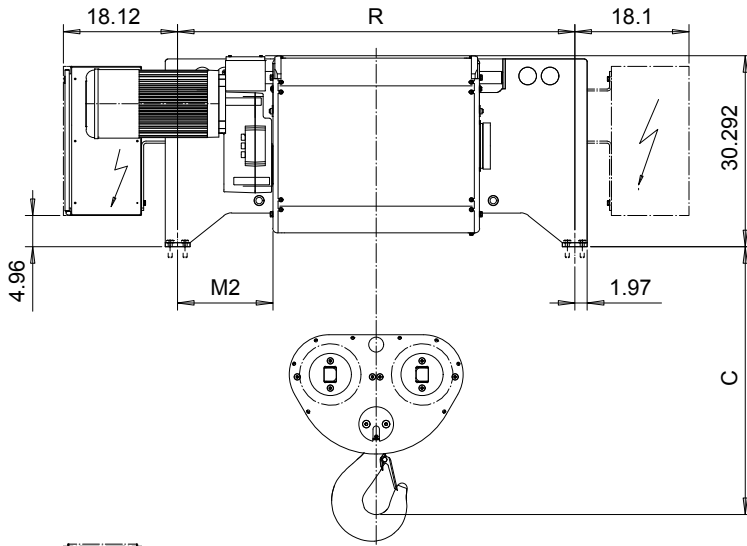


FOOT MOUNT, 6 PART DOUBLE

Hoist type:

SX6 062...F0

US-60Hz



HOL (ft)	HOL* (ft)	Length code	R (inch)	M1 (inch)	M3 (inch)	Approx Weight (lb)
16'-5"	N.A.	E	62.99	26.85	18.07	3086
23'-0"	16'-5"	F	62.99	32.75	15.12	3086
31'-2"	24'-7"	G	62.99	40.23	11.38	3307
41'-0"	34'-5"	H	86.61	50.07	18.27	3748
55'-10"	49'-2"	J	86.61	63.85	11.38	3968
68'-11"	62'-4"	K	88.58	75.66	6.46	4189
83'-8"	77'-1"	L	88.58	89.44	-0.39	4630
93'-6"	86'-11"	M	110.24	99.29	5.47	5070
106'-7"	100'-1"	N	110.24	111.10	-0.39	5291

HOL* with optional drum brake Weight of drum brake is 176 lb.

Load (TON)	Class ASME
20	H4+
25	H4
30	H3

Motor	P6	P7	P8	A7	S7	S8	SA
MOT (in)	21.1	22.7	28	21.1	28.1	30	31.6
Weight (lb)	187	231	234	157	179	214	265

Headroom - C dimension	
Standard	42.5"
with HS22 Hook operated limit switch	44.5"

Hoist weight calculated with P6 motor weight and without drum brake.

This document is the absolute property of R&M Materials Handling, Inc. This document must not be copied without the written permission of R&M Materials Handling, Inc. The contents thereof must not be disclosed to a third party nor be used for any unauthorized purpose. Contravention will be prosecuted.

ETTPAL Design	KHHMKH	Appd	Ref Drawing	QD-F-26
2002-09-03 Date	HOIST; FIXED			1:13
SLEQDOCV Owner Dept	2x6 ROPE FALLS			Folder
R&M MATERIALS HANDLING INC.	R&M MATERIALS HANDLING, INC HOIST & CRANE PRODUCTS SPRINGFIELD, OHIO	D006942-A		Issue 2/2016