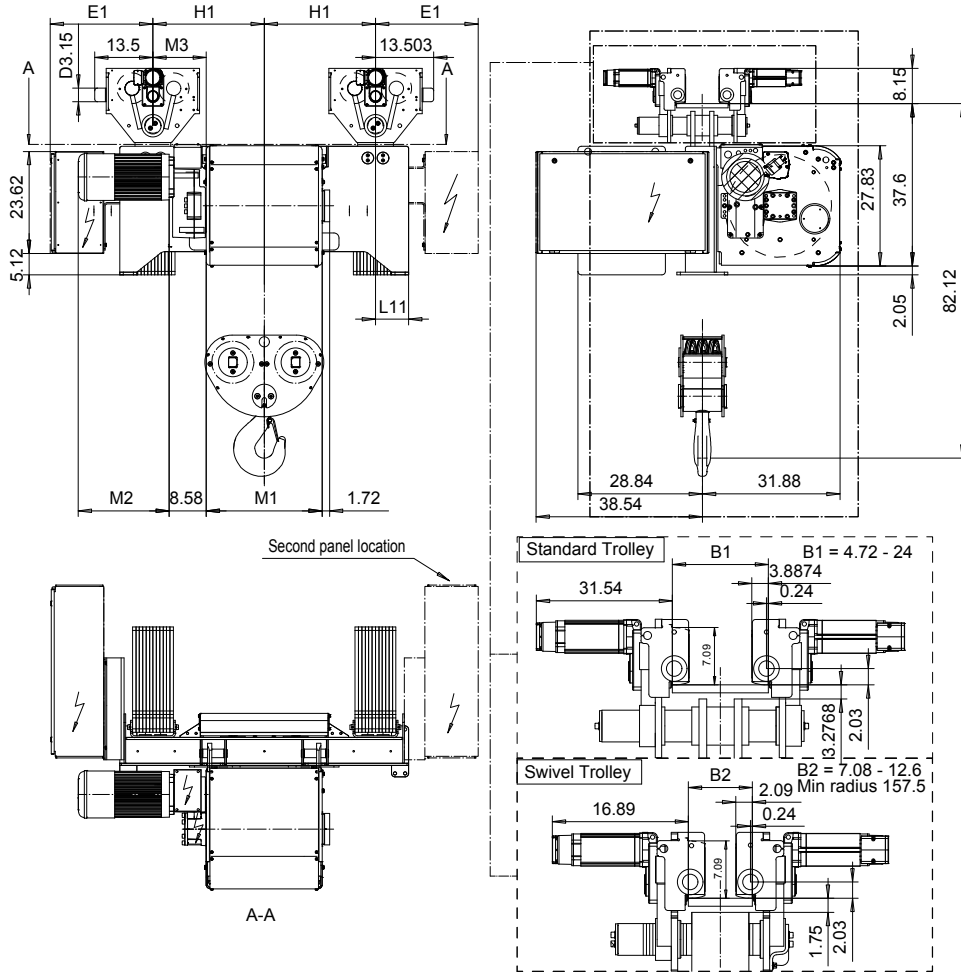


NORMAL HEADROOM, 6 PART DOUBLE
Hoist type:
SX6 062...N0

US-60Hz



HOL (ft)	HOL* (ft)	Length code	E1 (inch)	M1 (inch)	M3 (inch)	H1 (inch)	L11 (inch)	Wgt - Std Ttry (lb)	Wgt - Swivel Ttry (lb)
16'-5"	N.A.	E	23.82	26.85	12.36	25.79	7.68	5291	5732
23'-0"	16'-5"	F	23.82	32.75	9.41	25.79	7.68	5512	5952
31'-2"	24'-7"	G	23.82	40.23	5.67	25.79	7.68	5952	6393
41'-0"	34'-5"	H	23.82	50.07	12.56	37.6	7.68	6393	7055
55'-10"	49'-2"	J	23.82	63.85	5.67	37.6	7.68	7055	7496
68'-11"	62'-4"	K	36.42	75.66	-12.05	25.79	20.47	7496	8157
83'-8"	77'-1"	L	36.42	89.44	-18.94	25.79	20.47	8157	8818
93'-6"	86'-11"	M	35.43	99.29	-12.05	37.6	19.49	8818	9700
106'-7"	100'-1"	N	35.43	111.10	-17.95	37.6	19.49	9259	10362

Note: Hoist weight when B = 12"
 HOL* with optional drum brake Weight of drum brake 176 lbs

Load (TON)	Class ASME
20	H4+
25	H4
30	H3

Motor	P6	P7	P8	A7	S7	S8	SA
M2 (inch)	21.10	22.8	28	21.1	28.2	30	31.62
Weight (lb)	188	232	234	157	179	214	265

This document is the absolute property of R&M Materials Handling, Inc. This document must not be copied without the written permission of R&M Materials Handling, Inc. The contents thereof must not be disclosed to a third party nor be used for any unauthorized purpose. Contravention will be prosecuted.

CSDTLI Design 20103-11-30 Date	KHHMKH Chd Appd	Ref Drawing	QD-N-26
SLEODOCV Owner Dept	TROLLEY; NORMAL HEADROOM 2x6 ROPE FALLS		1 of 19 Folder
R&M MATERIALS HANDLING INC.	R&M MATERIALS HANDLING, INC HOIST & CRANE PRODUCTS SPRINGFIELD, OHIO	D006897-A	Issue 2/2016