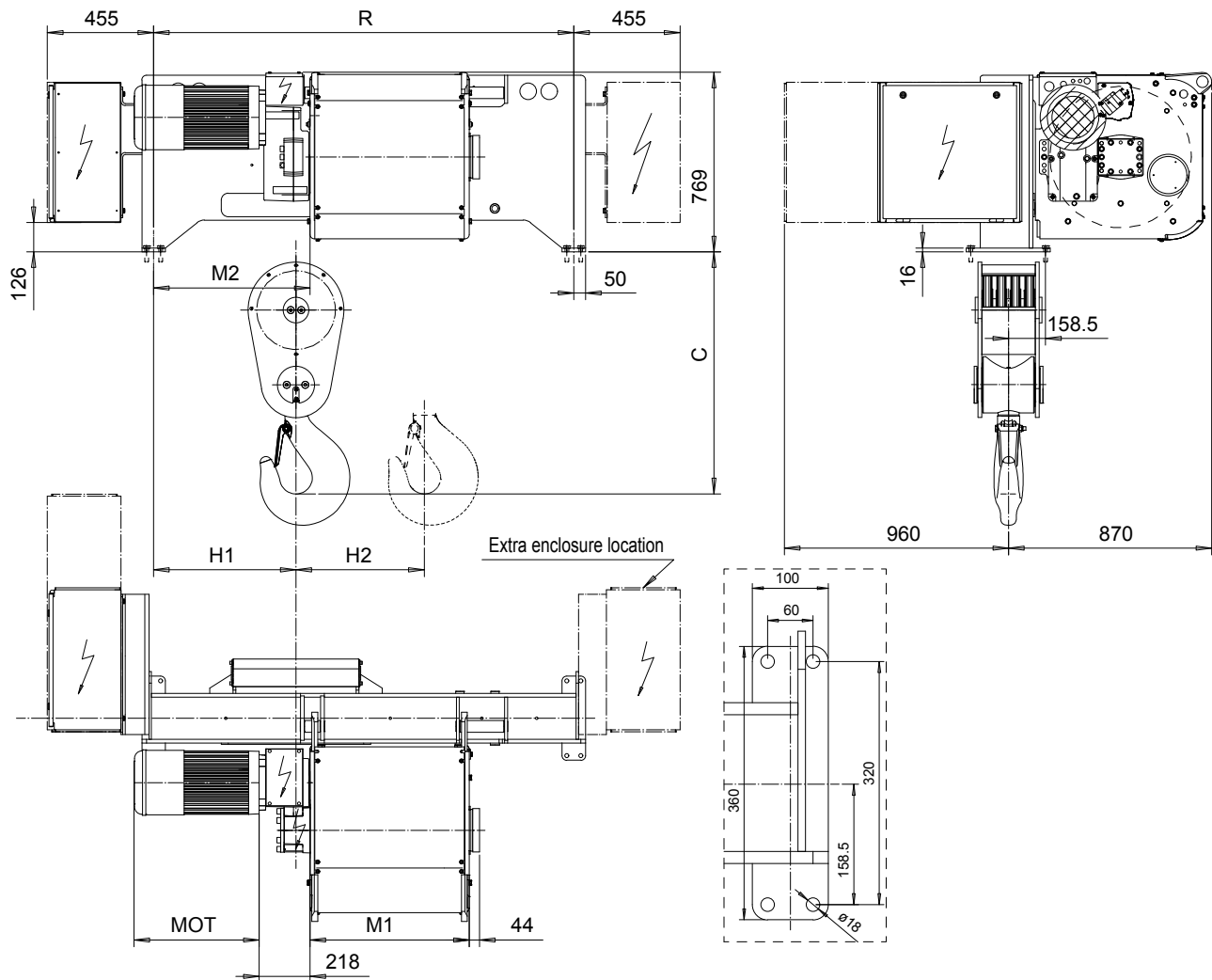


# FOOT MOUNT, 8 PART SINGLE

Hoist type:

SX6 081...F0

SI-60Hz



HOL	HOL*	Length	R	M1	M2	H1	H2	Approx Weight
(m)	(m)	code	(mm)	(mm)	(mm)	(mm)	(mm)	(kg)
7	5.5	E	1840	682	590	650	63	1500
9	7.5	F	1840	832	590	650	81	1600
11.5	10	G	2350	1022	670	730	105	1700
15	13.5	H	2350	1272	670	730	137	1800
20	18.5	J	2759	1622	840	690	180	2100
24	22.5	K	2759	1922	840	690	217	2200

HOL\* with optional drum brake Weight of drum brake is 80 kg.

Motor	P6	P7	P8	A7	S7	S8	SA
MOT (mm)	536	576	711	536	715	763	803
Weight (kg)	85	105	106	71	81	97	120

Load	Class
(kg)	Fem/ISO
32000	2m/M5
40000	1Am/M4

Headroom - C dimension	
Standard	1096 mm
with HS22 Hook operated limit switch	1146 mm

Hoist weight calculated with P6 motor weight and without drum brake.

This document is the absolute property of R&M Materials Handling, Inc. This document must not be copied without the written permission of R&M Materials Handling, Inc. The contents thereof must not be disclosed to a third party nor be used for any unauthorized purpose. Contravention will be prosecuted.

ETTPAL Design	ETTPAL Chd	Appd	Ref Drawing	QD-F-08
2002-09-02 Date	HOIST; FIXED			1:13
SLEODOCV Owner Dept	8 ROPE FALLS			Folder
R&M MATERIALS HANDLING INC.	R&M MATERIALS HANDLING INC. HOIST & CRANE PRODUCTS SPRINGFIELD, OHIO	D006939-A		Issue 11/2013