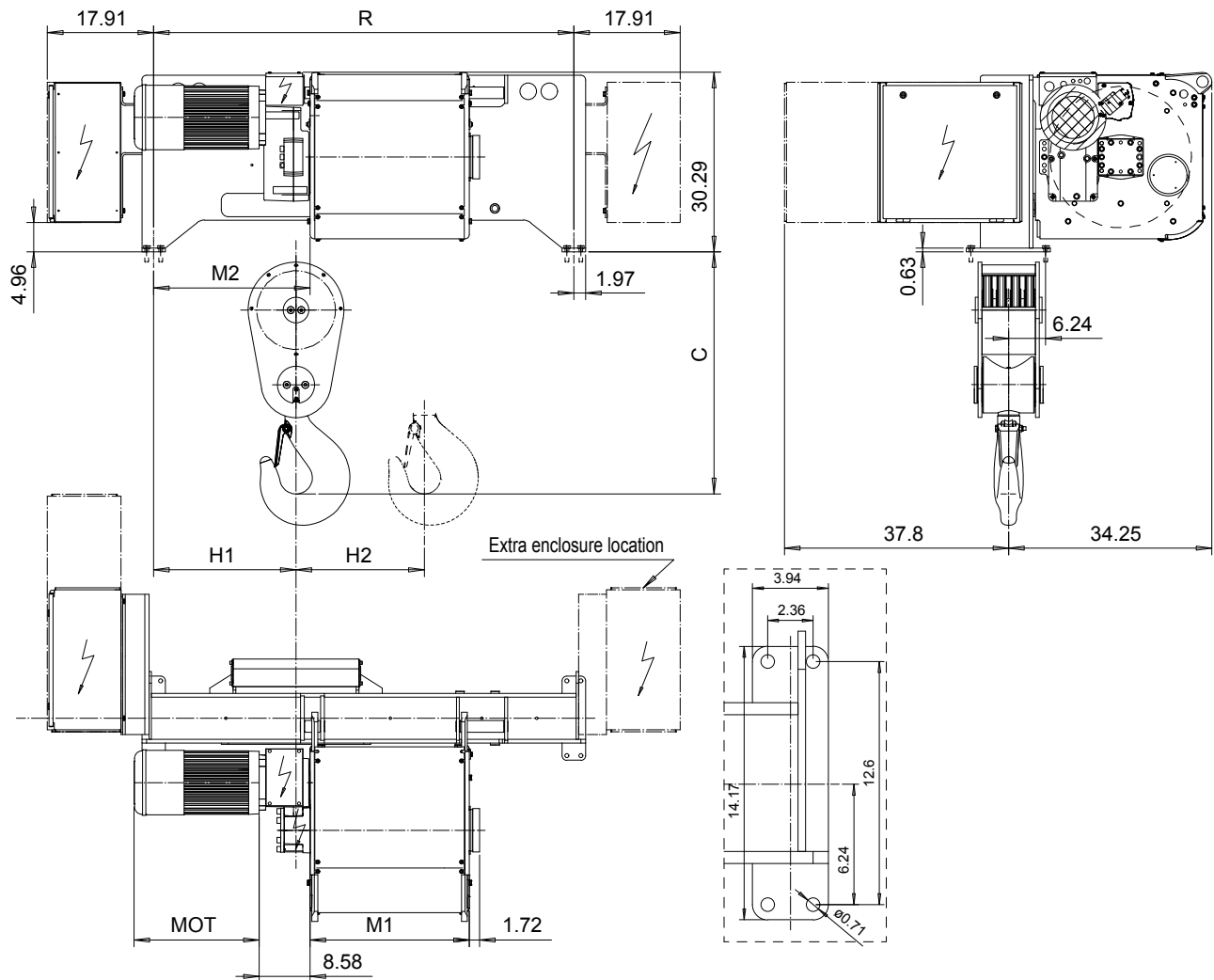


FOOT MOUNT, 8 PART SINGLE

Hoist type:

SX6 081...F0

US-60Hz



HOL	HOL*	Length	R	M1	M2	H1	H2	Approx Weight
(ft)	(ft)	code	(inch)	(inch)	(inch)	(inch)	(inch)	(lb)
22'-11"	18'-1"	E	72.44	26.85	23.23	20.59	2.48	3308
29'-6"	24'-7"	F	72.44	32.75	23.23	20.59	3.18	3528
37'-8"	32'-10"	G	92.52	40.23	26.38	28.74	4.13	3749
49'-2"	44'-3"	H	92.52	50.07	26.38	28.74	5.39	3969
65'-7"	60'-8"	J	108.62	63.85	33.07	27.16	7.08	4631
78'-9"	73'-10"	K	108.62	75.66	33.07	27.16	8.54	4851

HOL* with optional drum brake Weight of drum brake is 176 lb.

Motor	P6	P7	P8	A7	S7	S8	SA
MOT (in)	21.1	22.7	28	21.1	28.1	30	31.6
Weight (lb)	187	231	234	157	179	214	265

Load	Class
(TON)	ASME
30	H4
40	H3

Headroom - C dimension	
Standard	43.2"
with HS22 Hook operated limit switch	45.2"

Hoist weight calculated with P6 motor weight and without drum brake.

This document is the absolute property of R&M Materials Handling, Inc. This document must not be copied without the written permission of R&M Materials Handling, Inc. The contents thereof must not be disclosed to a third party nor be used for any unauthorized purpose. Contravention will be prosecuted.

ETTPAL Design	ETTPAL Chd	Appd	Ref Drawing	QD-F-08
2002-09-02 Date	HOIST; FIXED			1:13
SLEODOCV Owner Dept	8 ROPE FALLS			Folder
R&M MATERIALS HANDLING INC.	R&M MATERIALS HANDLING INC HOIST & CRANE PRODUCTS SPRINGFIELD, OHIO	D006939-A		Issue 11/2013