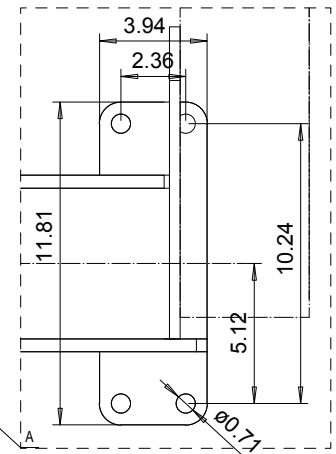
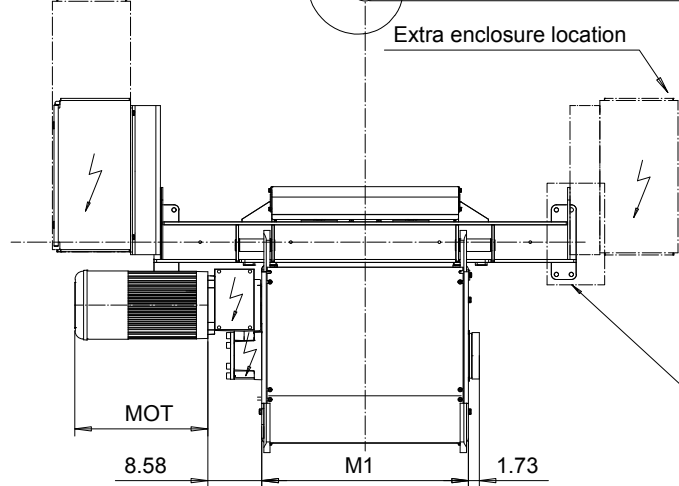
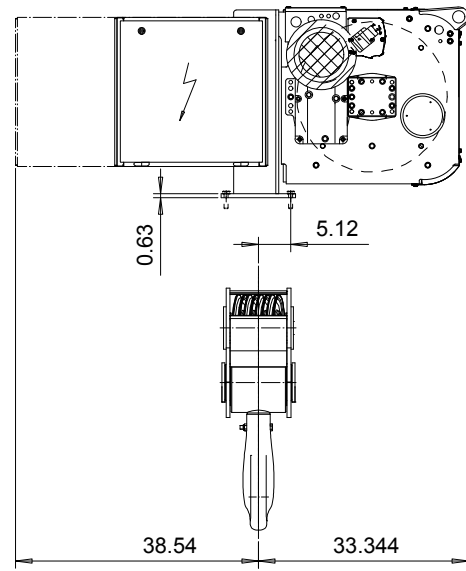
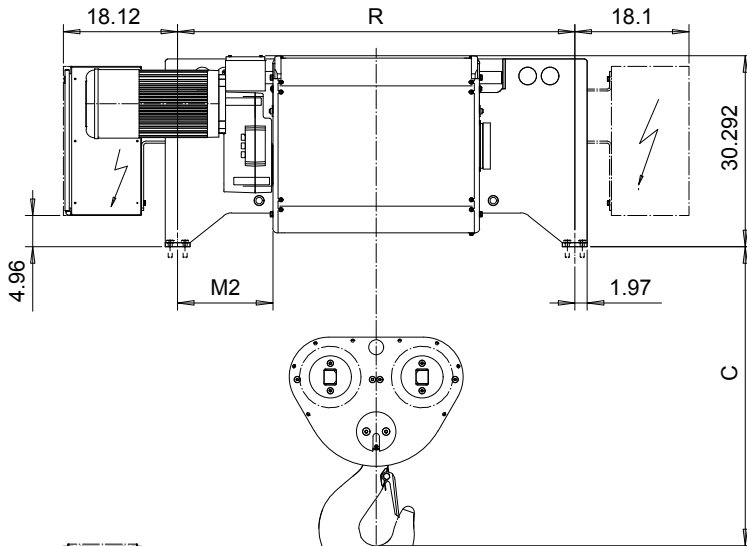


FOOT MOUNT, 8 PART DOUBLE

Hoist type:

SX6 082...F0

US-60Hz



HOL (ft)	HOL* (ft)	Length code	R (inch)	M1 (inch)	M3 (inch)	Approx Weight (lb)
16'-5"	11'-6"	F	62.99	32.75	15.12	3308
23'-0"	18'-0"	G	62.99	40.23	11.38	3528
31'-2"	26'-2"	H	86.61	50.07	18.27	3969
41'-0"	36'-1"	J	86.61	63.85	11.38	4190
50'-11"	45'-11"	K	88.58	75.66	6.46	4631
62'-4"	57'-5"	L	88.58	89.44	-0.39	4851
70'-6"	65'-7"	M	110.24	99.29	5.47	5292
80'-5"	75'-6"	N	110.24	111.10	-0.39	5733

HOL* with optional drum brake Weight of drum brake is 176 lb.

Load (TON)	Class ASME
30	H4
40	H3

Motor	P6	P7	P8	A7	S7	S8	SA
MOT (in)	21.1	22.7	28	21.1	28.1	30	31.6
Weight (lb)	187	231	234	157	179	214	265

Headroom - C dimension	
Standard	47.5'
with HS22 Hook operated limit switch	49.5"

Hoist weight calculated with P6 motor weight and without drum brake.

This document is the absolute property of R&M Materials Handling, Inc. This document must not be copied without the written permission of R&M Materials Handling, Inc. The contents thereof must not be disclosed to a third party nor be used for any unauthorized purpose. Contravention will be prosecuted.

ETTPAL Design	KHHMKH	Appd	Ref Drawing	QD-F-28
2002-09-03 Date	HOIST; FIXED			
SLEQDOCV Owner Dept	2x8 ROPE FALLS			
R&M MATERIALS HANDLING INC.	R&M MATERIALS HANDLING, INC HOIST & CRANE PRODUCTS SPRINGFIELD, OHIO	D006943-A		