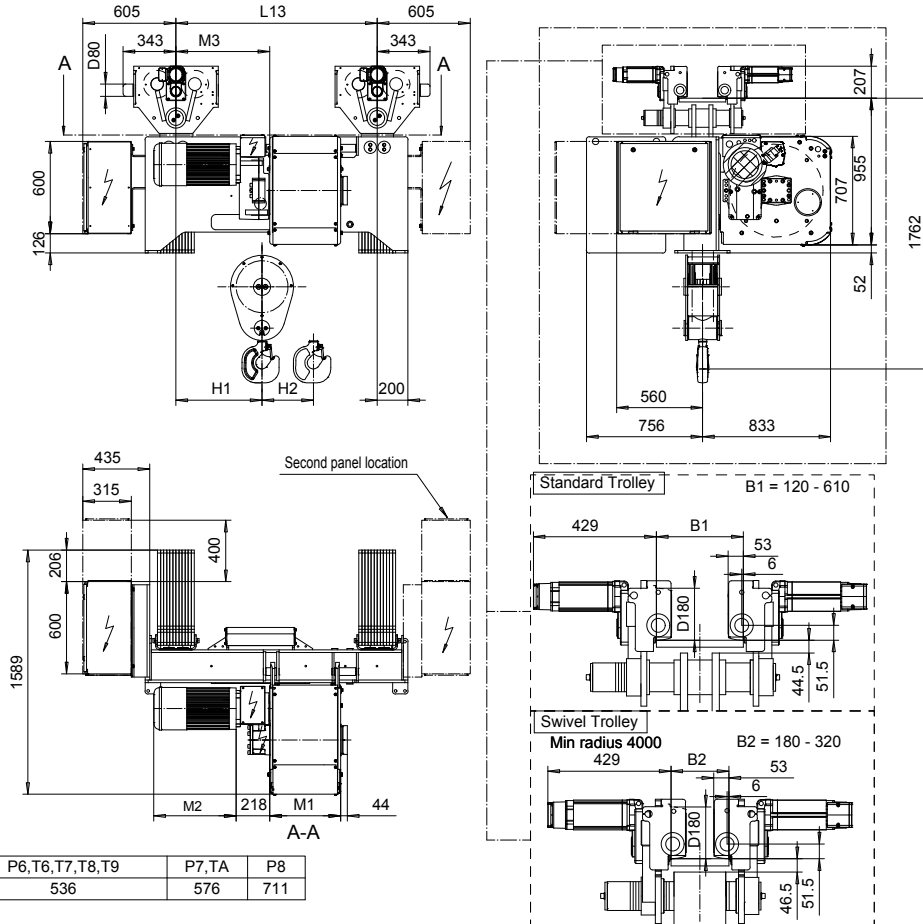


SI-60Hz

NORMAL HEADROOM, 4 PART SINGLE

Hoist type:

SX6 041...N0



Motor	P6,T6,T7,T8,T9	P7,TA	P8
M2 (mm)	536	576	711

HOL	Length	M1	M3	L13	H1	H2	Wgt - Std Ttry	Wgt - Std Ttry
(m)	code	(mm)	(mm)	(mm)	(mm)	(mm)	(kg)	(kg)
7.5	C	462	610	1310	560	69	2300	2500
10.5	D	562	610	1310	560	94	2300	2600
14	E	682	560	1000	510	125	2500	2700
18	F	832	560	1000	510	161	2600	2800
23.5	G	1022	640	1400	590	210	2800	3000
30.5	H	1272	640	1400	590	273	3000	3200
40	J	1622	600	1400	550	360	3400	3600
48.5	K	1922	600	1400	550	434	3600	3900

Note: Weight when B = 300mm

Load (kg)	Class Fem/ISO	Hoisting motor					
		Hoisting speed (m/min): Gear code					
		4.8/0.8: E	6/1: F	7.5/1.3: G	9.5: H	12: J	
12500	3m/M6	P6,T6	P6,T6	P7,T7	T8	T9	
16000	2m/M5	P6,T6	P6,T6	P7,T7	T8	T9	
20000	1Am/M4	P6,T6	P7,T7	P8,T8	T9	TA	

Hoist Panel Dimensions WxD (mm) + Configuration for Monorail Hoists				
Trolley control type	2-spd or CMXC	CM Select 002	CM Select 003-004	CM Select 005-007
Panel size + 2nd panel size - 380-500V	1000 x 600	1000 x 600	1000 x 600	1000 x 600 + 1000 x 600
Panel size + 2nd panel size - Other Voltages	1000 x 600	1000 x 600	1000 x 600 + 600 x 400	1000 x 600 + 1000 x 600

ETTVPH Design 2010-11-30 Date	ETTVAL Chd Appd	Ref Drawing	QD-N-04
SLEQDOCV Owner Dept	TROLLEY; NORMAL HEADROOM		
R&M MATERIALS HANDLING INC.	4 ROPE FALLS		
F&M MATERIALS HANDLING, INC. HOIST & CRANE PRODUCTS SPRINGFIELD, OHIO	D006986-A		
		Issue	02/2011

This document is the absolute property of R&M Materials Handling, Inc. This document must not be copied without the written permission of R&M Materials Handling, Inc. The contents thereof must not be disclosed to a third party nor be used for any unauthorized purpose. Contravention will be prosecuted.