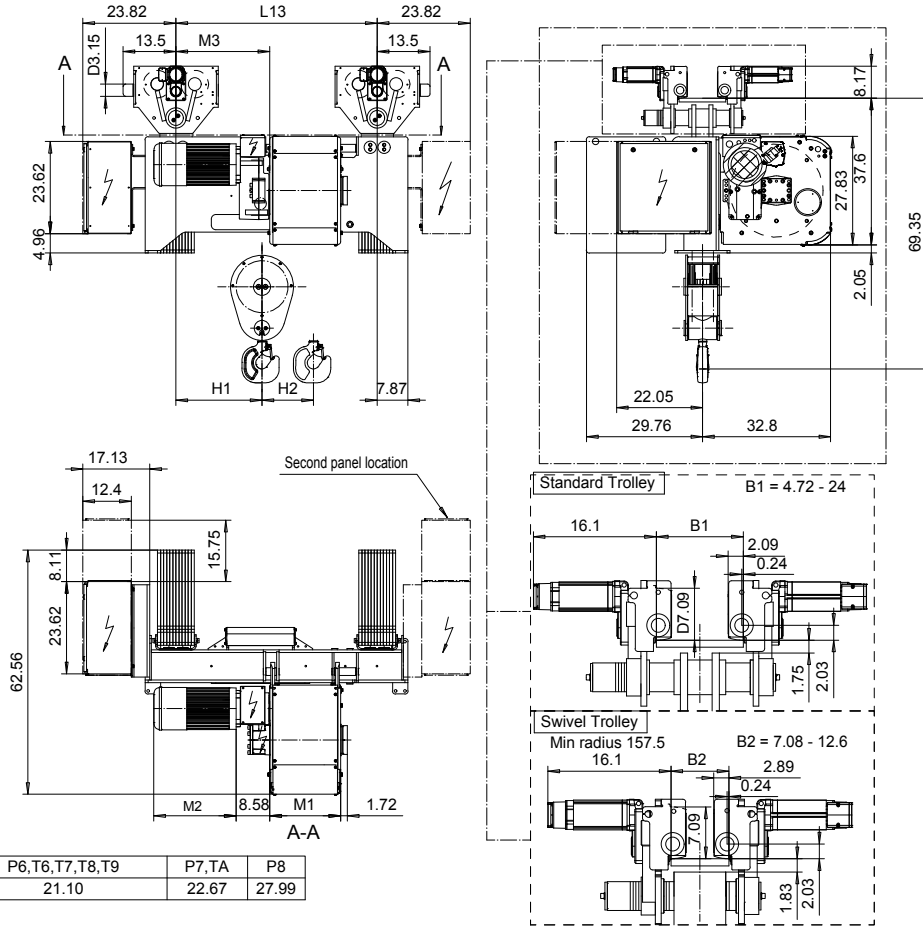


US-60Hz

NORMAL HEADROOM, 4 PART SINGLE

Hoist type:

SX6 041...N0



Motor	P6,T6,T7,T8,T9	P7,TA	P8
M2 (inch)	21.10	22.67	27.99

HOL	Length	M1	M3	L13	H1	H2	Wgt - Std Trly	Wgt - Swivel Trly
(ft)	code	(inch)	(inch)	(inch)	(inch)	(inch)	(lb)	(lb)
24'- 6"	C	18.19	24.02	51.57	22.05	2.71	5071	5512
34'- 5"	D	22.13	24.02	51.57	22.05	3.70	5071	5732
45'-11"	E	26.85	22.05	39.37	20.08	4.92	5512	5952
59'-0"	F	32.76	22.05	39.37	20.08	6.33	5732	5732
77'- 1"	G	40.24	25.2	55.12	23.23	8.26	6173	6614
100'-0"	H	50.08	25.2	55.12	23.23	10.74	6614	7055
131'-2"	J	63.86	23.62	55.12	21.65	14.17	7496	7937
159'- 1"	K	75.67	23.62	55.12	21.65	17.08	7937	8598

Note: Weight when B = 12"

Load (TON)	Class ASME	Hoisting motor					
		Hoisting speed (ft/min): Gear code					
		16/2.4 E	20/3.1: F	25/3.9: G	30: H	40: J	
12 1/2	H4+	P6,T6	P6,T6	P7,T7	T8	T9	
15	H4	P6,T6	P6,T6	P7,T7	T8	T9	
20	H3	P6,T6	P7,T7	P8,T8	T9	TA	

Hoist Panel Dimensions WxD (inch) + Configuration for Monorail Hoists				
Trolley control type	2-spd or CMXC	CM Select 002	CM Select 003-004	CM Select 005-007
Panel size + 2nd panel size - 380-500V	39.37 x 23.62	39.37 x 23.62	39.37 x 23.62	39.37 x 23.62 + 39.37 x 23.62
Panel size + 2nd panel size - Other Voltages	39.37 x 23.62	39.37 x 23.62	39.37 x 23.62 + 23.62 x 15.75	39.37 x 23.62 + 39.37 x 23.62

ETTVPH Design 2010-11-30 Date	ETTPAL Chd Appd Ref Drawing	QD-N-04
SLEQDOCV Owner Dept	TROLLEY; NORMAL HEADROOM 4 ROPE FALLS	Footer
R&M MATERIALS HANDLING INC.	R&M MATERIALS HANDLING, INC. HOIST & CRANE PRODUCTS SPRINGFIELD, OHIO	Issue 02/2011
D006986-A		

This document is the absolute property of R&M Materials Handling, Inc. This document must not be copied without the written permission of R&M Materials Handling, Inc. The contents thereof must not be disclosed to a third party nor be used for any unauthorized purpose. Contravention will be prosecuted.