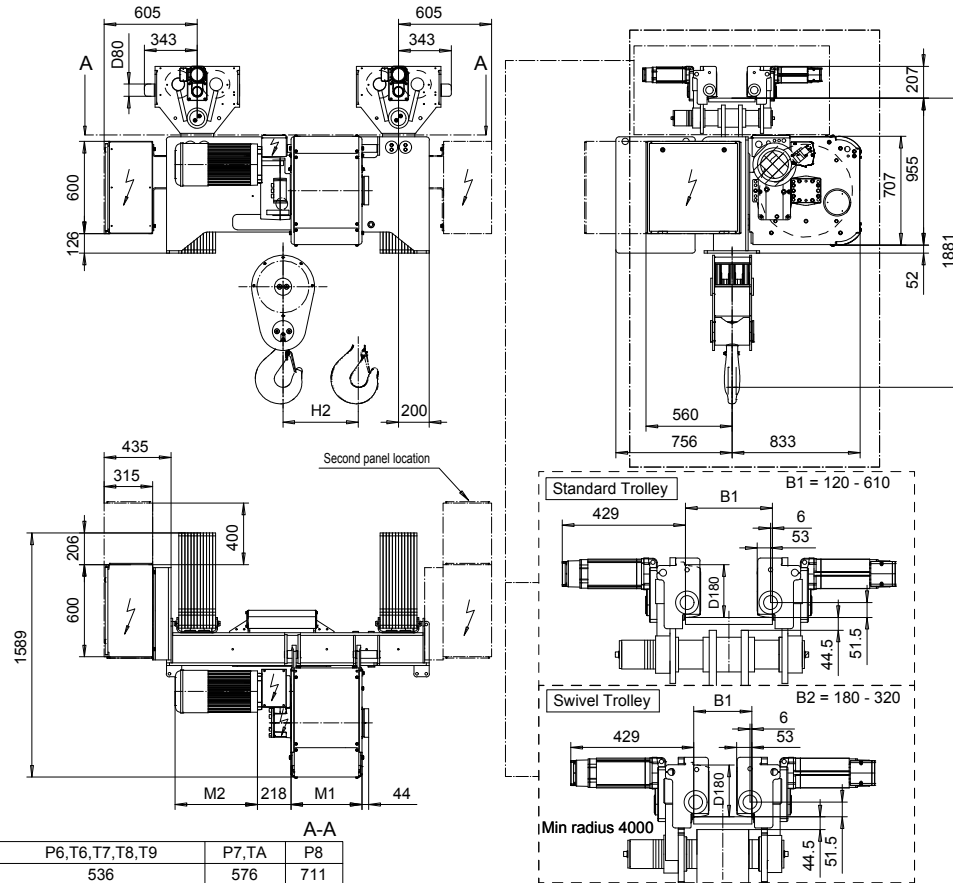


SI-60Hz

**NORMAL HEADROOM, 6 PART SINGLE**

Hoist type:

SX6 061...N0



A-A			
Motor	P6,T6,T7,T8,T9	P7,TA	P8
M2 (mm)	536	576	711

HOL (m)	Length code	M1 (mm)	M3 (mm)	L13 (mm)	H1 (mm)	H2 (mm)	Wgt - Std Ttry (kg)	Wgt - Swivel Ttry (kg)
5	C	462	610	1310	558	46	2400	2600
7	D	562	610	1310	558	63	2400	2700
9	E	682	560	1000	508	84	2600	2800
12	F	832	560	1000	508	107	2700	2900
15.5	G	1022	640	1400	588	140	2900	3100
20	H	1272	640	1400	588	182	3100	3300
26.5	J	1622	600	1400	548	240	3500	3700
32	K	1922	600	1400	548	289	3700	4000

Note: Weight when B = 300mm

Load (kg)	Class Fem/ISO	Hoisting motor				
		Hoisting speed (m/min): Gear code				
		3/0.5: E	3.8/0.6: F	4.8/0.8: G	6: H	7.5: J
20000	3m/M6	P6,T6	P6,T6	P7,T7	T8	T9
25000	2m/M5	P6,T6	P6,T6	P7,T7	T8	T9
30000	1Am/M4	P6,T6	P7,T7	P8,T8	T9	TA

Hoist Panel Dimensions WxD (mm) + Configuration for Monorail Hoists				
Trolley control type	2-spd or CMXC	CM Select 002	CM Select 003-004	CM Select 005-007
Panel size + 2nd panel size - 380-500V	1000 x 600	1000 x 600	1000 x 600	1000 x 600 + 1000 x 600
Panel size + 2nd panel size - Other Voltages	1000 x 600	1000 x 600	1000 x 600 + 600 x 400	1000 x 600 + 1000 x 600

This document is the absolute property of R&M Materials Handling, Inc. This document must not be copied without the written permission of R&M Materials Handling, Inc. The contents thereof must not be disclosed to a third party nor be used for any unauthorized purpose. Contravention will be prosecuted.

ETTVPH Design 2003-09-09 Date	ETTPAL Chd Appd	Ref Drawing	QD-N-06
SLEQDCV Owner Dept	TROLLEY; NORMAL HEADROOM		
R&M MATERIALS HANDLING INC.	6 ROPE FALLS		
R&M MATERIALS HANDLING INC. HOIST & CRANE PRODUCTS SPRINGFIELD, OHIO	D006987-A		
			11/2010