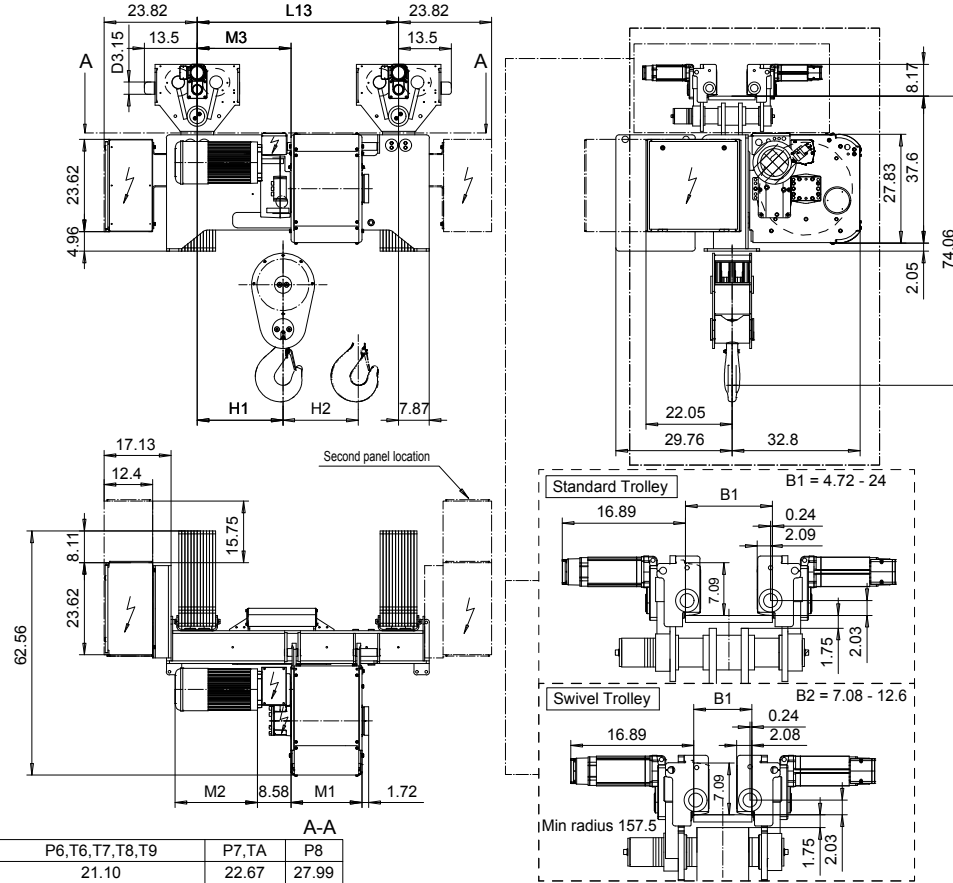


US-60Hz

NORMAL HEADROOM, 6 PART SINGLE

Hoist type:

SX6 061...N0



A-A			
Motor	P6,T6,T7,T8,T9	P7,TA	P8
M2 (inch)	21.10	22.67	27.99

HOL (ft)	Length Code	M1 (inch)	M3 (inch)	L13 (inch)	H1 (inch)	H2 (inch)	Wgt - Std Trly (lb)	Wgt - Swivel Trly (lb)
16'- 4"	C	18.19	24.02	51.57	21.97	1.81	5291	5732
22'-11"	D	22.13	24.02	51.57	21.97	2.48	5291	5952
29'- 6"	E	26.85	22.05	39.37	20	3.30	5732	6173
39'- 4"	F	32.76	22.05	39.37	20	4.21	5952	6393
50'-10"	G	40.24	25.2	55.12	23.15	5.51	6173	6834
65'- 7"	H	50.08	25.2	55.12	23.15	7.16	6834	7275
86'-11"	J	63.86	23.62	55.12	21.57	9.44	7716	8157
105'-0"	K	75.67	23.62	55.12	21.57	11.37	8157	8818

Note: Weight when B = 12"

Load (TON)	Class ASME	Hoisting motor				
		Hoisting speed (ft/min): Gear code				
		10/1.5: E	12.5/1.9: F	16/2.4: G	20: H	25: J
20	H4+	P6,T6	P6,T6	P7,T7	T8	T9
25	H4	P6,T6	P6,T6	P7,T7	T8	T9
30	H3	P6,T6	P7,T7	P8,T8	T9	TA

Hoist Panel Dimensions WxD (inch) + Configuration for Monorail Hoists				
Trolley control type	2-spd or CMXC	CM Select 002	CM Select 003-004	CM Select 005-007
Panel size + 2nd panel size - 380-500V	39.37 x 23.62	39.37 x 23.62	39.37 x 23.62	39.37 x 23.62 + 39.37 x 23.62
Panel size + 2nd panel size - Other Voltages	39.37 x 23.62	39.37 x 23.62	39.37 x 23.62 + 23.62 x 15.75	39.37 x 23.62 + 39.37 x 23.62

This document is the absolute property of R&M Materials Handling, Inc. This document must not be copied without the written permission of R&M Materials Handling, Inc. The contents thereof must not be disclosed to a third party nor be used for any unauthorized purpose. Contravention will be prosecuted.

ETTVPH Design 2003-09-09 Date	ETTPAL Chd Appd	Ref Drawing	QD-N-06
SLEQDOCV Owner Dept	TROLLEY; NORMAL HEADROOM		
R&M MATERIALS HANDLING INC.	6 ROPE FALLS		
R&M MATERIALS HANDLING INC. HOIST & CRANE PRODUCTS SPRINGFIELD, OHIO	D006987-A		
			11/2010