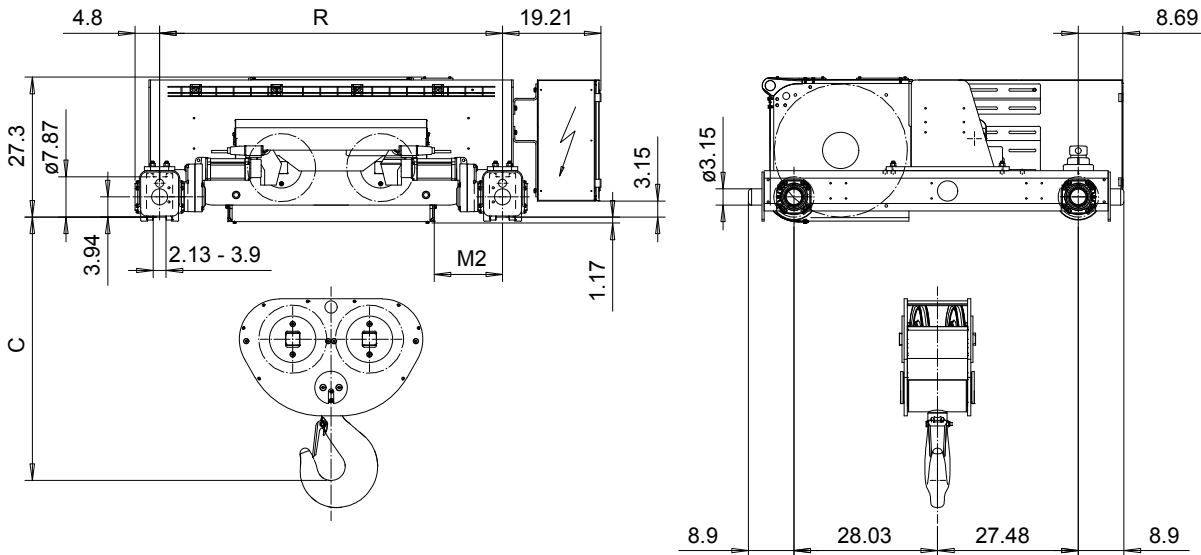


**DOUBLE GIRDER, MEDIUM, 4 PART DOUBLE**  
**Hoist type:**  
**SX7 042...D0**

US-60Hz



Headroom - C dimension	
Standard	51.5"
with HS22 Hook operated limit switch	53.5"

Motor	P6	P7	A7	S7	S8	SA
MOT (in)	21.1	22.7	21.1	28.1	30	31.6
Weight (lb)	187	231	157	179	214	265

HOL	HOL*	Length	M1	M2	Min R	Max R	Approx Weight
(ft)	(ft)	code	(inch)	(inch)	(ft)	(ft)	(lb)
24'-6"	13'-1"	F	32.76	17.09	5'-6 15/16"	7'-10 1/2"	4497
32'-10"	21'-4"	G	40.24	13.35	5'-6 15/16"	8'-10 5/16"	4850
44'-3"	32'-10"	H	50.07	22.2	6'-6 3/4"	10'-2"	5137
60'-8"	49'-3"	J	63.85	15.31	7'-10 1/2"	10'-2"	5578
75'-5"	64'-0"	K	75.66	15.31	8'-10 5/16"	10'-2"	5908
90'-2"	78'-9"	L	89.44	16.29	10'-2"	11'-1 7/8"	6349
101'-8"	90'-3"	M	99.29	17.28	11'-1 7/8"	12'-5 5/8"	6680
116'-5"	105'-0"	N	111.10	19.25	12'-5 5/8"	13'-9 3/8"	7120

HOL\* with optional drum brake Weight of drum brake is 176 lb.

Load	Class
(TON)	ASME
25	H4+
30	H4
40	H3

Standard rail gauges are 5'-6 15/16", 6'-6 3/4", 7'-10 1/2", 8'-10 5/16", 10'-2", 11'-1 7/8", 12'-5 5/8" and 13'-9 3/8".

M2 is listed at minR.

Hoist weight calculated at Min R, with P6 motor, without drum brake.

This document is the absolute property of R&M Materials Handling, Inc. This document must not be copied without the written permission of R&M Materials Handling, Inc. The contents thereof must not be disclosed to a third party nor be used for any unauthorized purpose. Contravention will be prosecuted.

ETTPAL Design 2003-01-13 Date	ETTPAL Chd Appd	Ref Drawing	QE-M-24
SLEQDOCV Owner/Desig	TROLLEY; DOUBLE GIRDER MEDIUM, 2X4 ROPE FALLS		1-18 Folder
R&M MATERIALS HANDLING INC.	R&M MATERIALS HANDLING, INC. HOIST & CRANE PRODUCTS SPRINGFIELD, OHIO	D006656-A	Issue 4