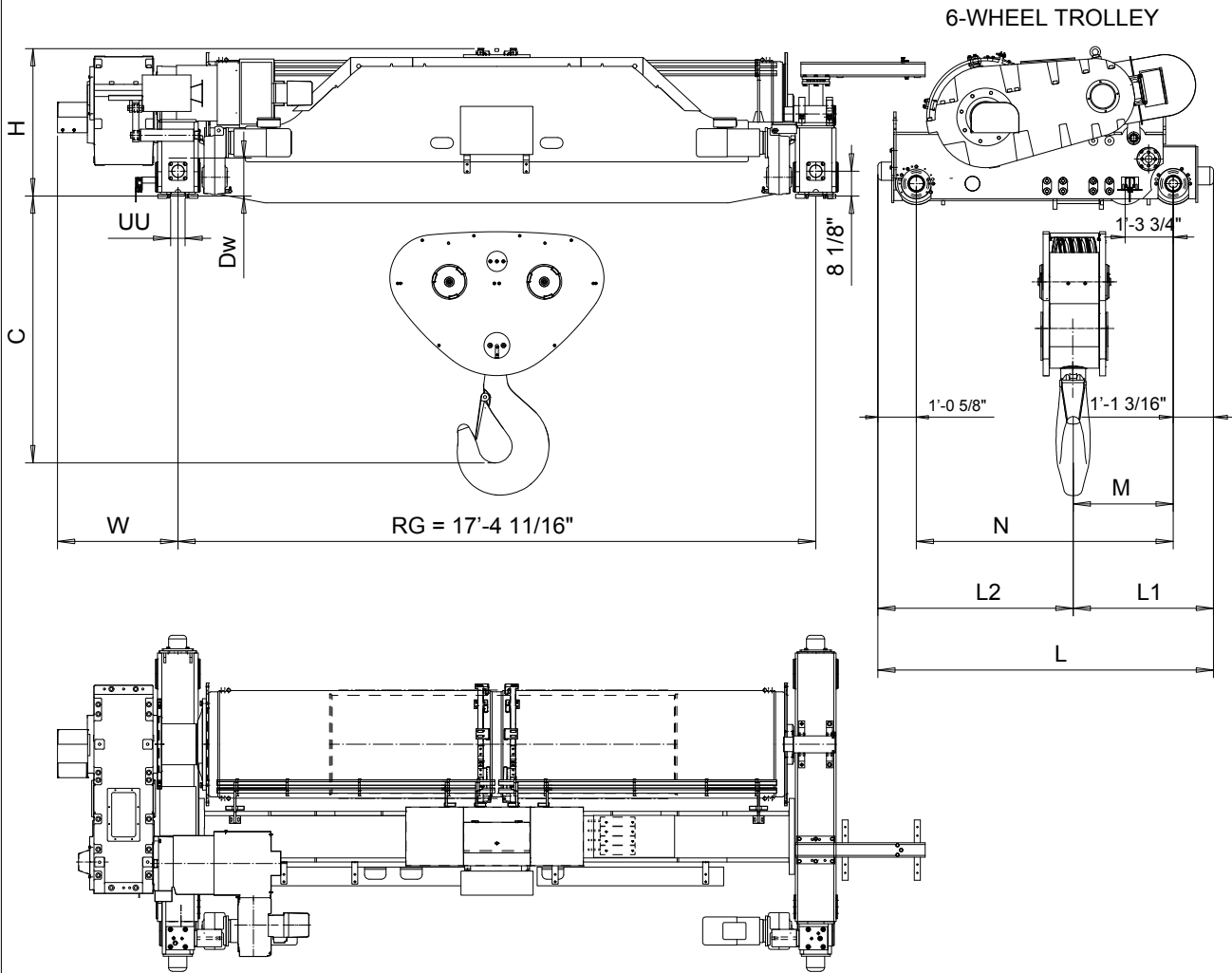


Hoist type:
SXL20...R5300

US units



Trolley	Duty	Hoisting trolley dimensions (inch)							Rail wheel (inch)		C (in)	Weight (lb)
		H	M	N	L	L1	L2	W	Dw	UU*	(53)	(53)
SXL20022	X	49 1/4"	36 1/4"	84 1/16"	109 7/8"	49 7/16"	60 7/16"	39 3/8"	12.40"	4 1/4"	76 1/4"	41557
SXL20032	X	49 1/4"	36 1/4"	84 1/16"	109 7/8"	49 7/16"	60 7/16"	39 3/8"	12.40"	4 1/4"	84 1/2"	42219
SXL20042	X	49 1/4"	35 1/16"	84 1/16"	109 7/8"	48 1/4"	61 5/8"	39 3/8"	12.40"	4 1/4"	74 1/2"	43343
SXL20052	X	49 1/4"	34 5/8"	84 1/16"	109 7/8"	47 7/8"	62"	39 3/8"	12.40"	4 1/4"	88 3/8"	44401
SXL20062	X	49 1/4"	33 7/8"	84 1/16"	109 7/8"	47 1/16"	62 13/16"	39 3/8"	12.40"	5"	79"	45570
SXL20082	X	49 1/4"	32 11/16"	84 1/16"	109 7/8"	45 7/8"	64"	39 3/8"	12.40"	5"	83 1/4"	47289

Weight of the service platform is not included into the trolley weight. *UU based on 4" or 4 3/4" rail.

Rev Explanation Date Revised by Checked by

This document is the absolute property of R&M Materials Handling, Inc. This document must not be copied without the written permission of R&M Materials Handling, Inc. The contents thereof must not be disclosed to a third party nor be used for any unauthorized purpose. Contravention will be prosecuted.

DESHPYO
Design

2011-06-17
Date

Owner Dept

R&M
MATERIALS
HANDLING
INC.

R&M MATERIALS HANDLING, INC.
HOIST & CRANE PRODUCTS
SPRINGFIELD, OHIO

Chd

Appd

Ref Drawing

TROLLEY; DOUBLE GIRDER

SXL20

SXL20-R5300

DA003432

1:27

Folder

Issue

1