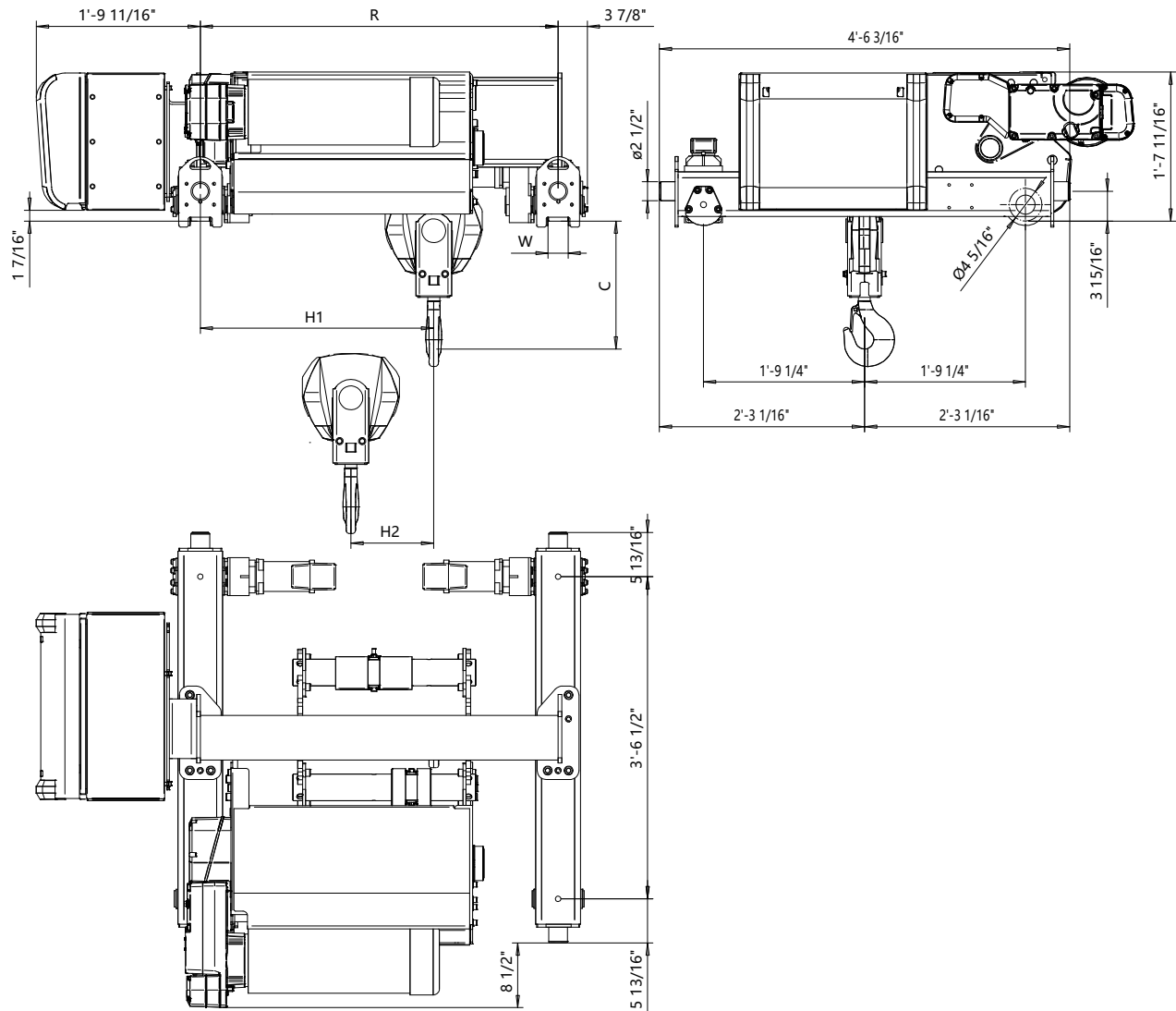


Double Girder - Medium, 2 PART SINGLE
Hoist type:
SXR10 021..M

US-60Hz



Headroom C-Dimension					Notes
Case 1 (inch)	Case 2 (inch)	Case 3 (inch)	Case 4 (inch)	Case 5 (inch)	Case 1: Steel rope without HS22 limit switch
16 15/16"	16 15/16"	16 15/16"	16 15/16"	16 15/16"	Case 2: Steel rope with HS22 limit switch
					Case 3: Steel rope with HS22 L.S. & Rope angle sensor
					Case 4: Synthetic rope and HS22 limit switch
					Case 5: Synthetic rope with HS22 L.S. & Rope angle sensor
					HS22 limit switch mandatory with synthetic rope

HOL (ft-in)	Length code	H1	H2	WW min	WW max	R min	R max	Estimated Weight *	
								R min (lb)	R max (lb)
59'-0"	C	2'-6 3/4"	11"	2 1/16"	3 1/4"	3'-11 1/4"	6'-6 3/4"	1510	1585
78'-8"	D	3'-1 3/4"	14 1/2"	2 1/16"	3 1/4"	4'-7 1/8"	6'-6 3/4"	1583	1640
98'-5"	E	3'-9"	17 1/4"	2 1/16"	3 1/4"	5'-6 15/16"	6'-6 3/4"	1671	1700
118'-1"	F	4'-4 5/16"	22 1/4"	2 1/16"	3 1/4"	6'-6 3/4"	6'-6 3/4"	1757	1757

Load (ton)	Class
4	H4+
5	H4

* Estimated weight with P5 hoist motor
Standard rail gauges are 3'-11 1/4", 4'-7 1/8", 5'-6 15/16", 6'-6 3/4".
Default trolley gauge is R min. Dim H1 listed is based on R min.

Rev Explanation Date Revised by Checked by
This document is the absolute property of R&M Materials Handling, Inc. This document must not be copied without the written permission of R&M Materials Handling, Inc.
The contents thereof must not be disclosed to a third party nor be used for any unauthorized purpose. Contravention will be prosecuted.

Design	Chd	Appd	Ref Drawing	R10-M-02
Date	DOUBLE GIRDER HOIST			
SLEOMECE Owner Dept	2 PART SINGLE			
R10021_M				1:10 Folder
				Issue 1