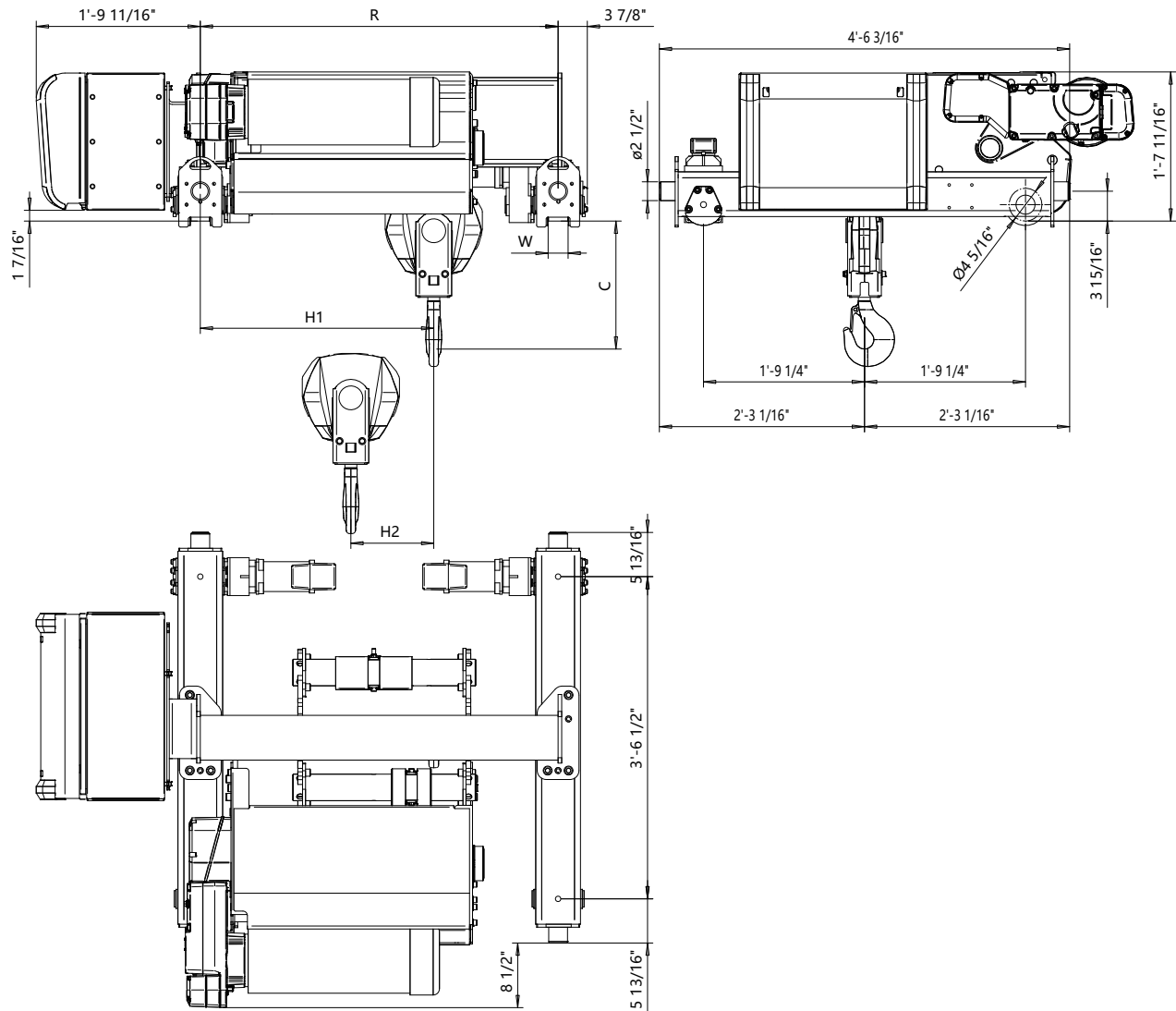


Double Girder - Medium, 2 PART SINGLE
Hoist type:
SXR10 021..M

US-60Hz



| Headroom C-Dimension | | | | | Notes |
|----------------------|------------------|------------------|------------------|------------------|---|
| Case 1 (inch) | Case 2 (inch) | Case 3 (inch) | Case 4 (inch) | Case 5 (inch) | Case 1: Steel rope without HS22 limit switch |
| 16 15/16" | 16 15/16" | 16 15/16" | 16 15/16" | 16 15/16" | Case 2: Steel rope with HS22 limit switch |
| | | | | | Case 3: Steel rope with HS22 L.S. & Rope angle sensor |
| | | | | | Case 4: Synthetic rope and HS22 limit switch |
| | | | | | Case 5: Synthetic rope with HS22 L.S. & Rope angle sensor |
| | | | | | HS22 limit switch mandatory with synthetic rope |

| HOL (ft-in) | Length code | H1 | H2 | WW min | WW max | R min | R max | Estimated Weight * | |
|----------------|----------------|------------|---------|---------|--------|-------------|-----------|--------------------|---------------|
| | | | | | | | | R min (lb) | R max (lb) |
| 59'-0" | C | 2'-6 3/4" | 11" | 2 1/16" | 3 1/4" | 3'-11 1/4" | 6'-6 3/4" | 1510 | 1585 |
| 78'-8" | D | 3'-1 3/4" | 14 1/2" | 2 1/16" | 3 1/4" | 4'-7 1/8" | 6'-6 3/4" | 1583 | 1640 |
| 98'-5" | E | 3'-9" | 17 1/4" | 2 1/16" | 3 1/4" | 5'-6 15/16" | 6'-6 3/4" | 1671 | 1700 |
| 118'-1" | F | 4'-4 5/16" | 22 1/4" | 2 1/16" | 3 1/4" | 6'-6 3/4" | 6'-6 3/4" | 1757 | 1757 |

| Load (ton) | Class |
|---------------|-------|
| 4 | H4+ |
| 5 | H4 |
| 6 | H3 |

* Estimated weight with P5 hoist motor
Standard rail gauges are 3'-11 1/4", 4'-7 1/8", 5'-6 15/16", 6'-6 3/4".
Dim H1 listed is based on R min.

Rev Explanation Date Revised by Checked by

This document is the absolute property of R&M Materials Handling, Inc. This document must not be copied without the written permission of R&M Materials Handling, Inc.
The contents thereof must not be disclosed to a third party nor be used for any unauthorized purpose. Contravention will be prosecuted.

| | | | | |
|------------------------|---------------------|------|-------------|----------------|
| Design | Chd | Appd | Ref Drawing | R10-M-02 |
| Date | DOUBLE GIRDER HOIST | | | |
| SLEOMECE Owner Dept | 2 PART SINGLE | | | |
| R10021_M | | | | 1:10 Folder |
| | | | | Issue 1 |