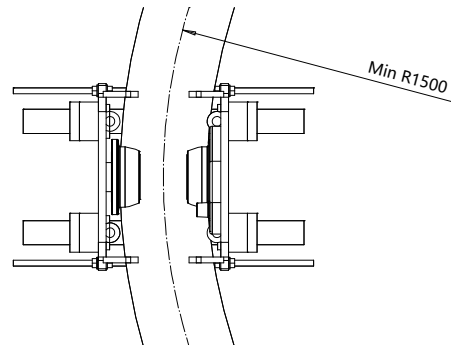
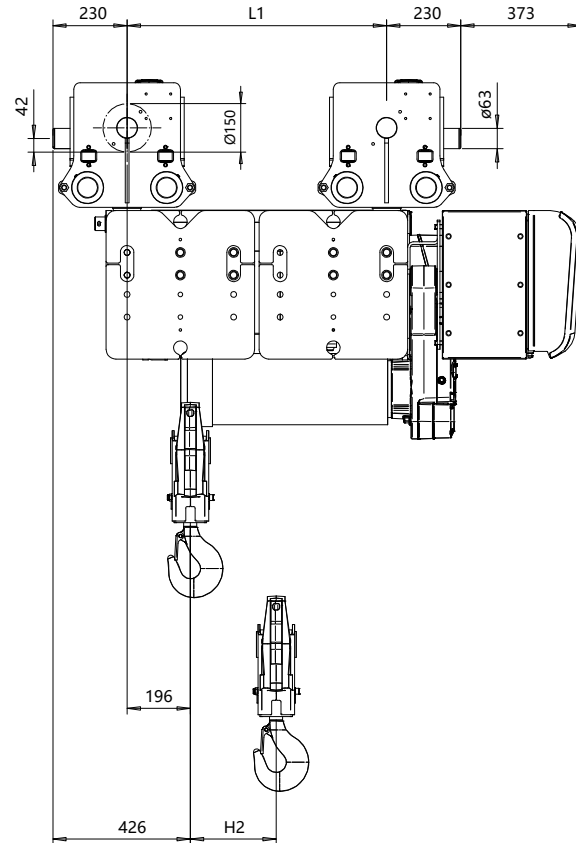
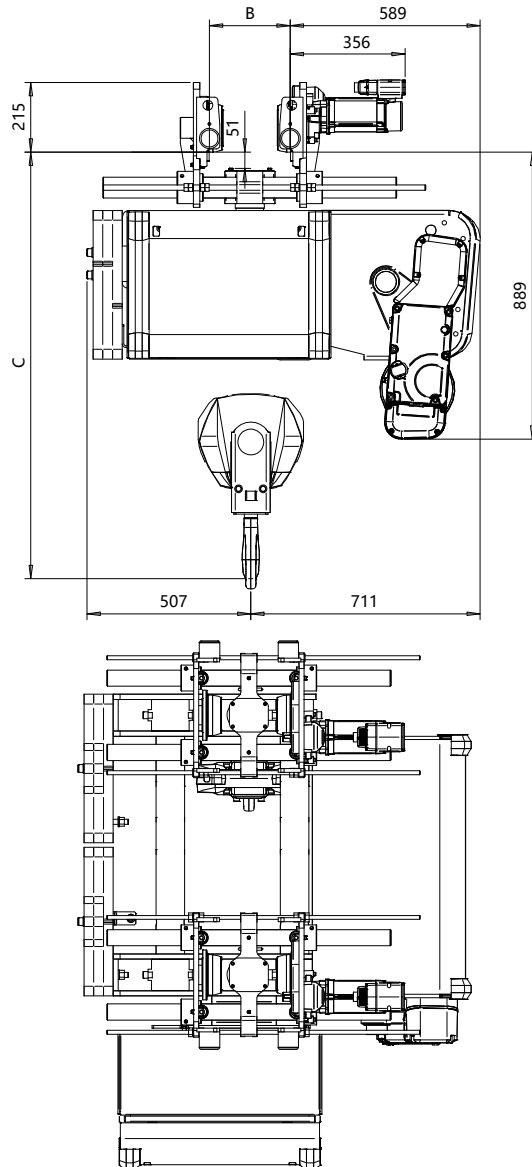


# Normal Headroom - Swivel Trolley for Curved Track, 2 PART SINGLE Hoist type:

SXR10 021..U

SI



Flange Width	Headroom C-Dimension				
B-dimension	Case 1	Case 2	Case 3	Case 4	Case 5
[mm]	[mm]	[mm]	[mm]	[mm]	[mm]
120 - 450	1095	1295	1340	1215	1280
Case 1: Steel rope without HS22 limit switch					
Case 2: Steel rope with HS22 limit switch					
Case 3: Steel rope with HS22 L.S. & Rope angle sensor					
Case 4: Synthetic rope with HS22 limit switch					
Case 5: Synthetic rope with HS22 L.S. & Rope angle sensor					
HS22 limit switch mandatory with synthetic rope					

HOL	Length	H2	L1	Estimated weight
(m)	code	(mm)	(mm)	(kg)
18	C	266	804	566
24	D	354	977	605
30	E	443	1164	636

Load	Class	Class
(kg)	Fem/ISO	ASME
4000	3m/M6	H4+
5000	2m/M5	H4

Rev Explanation Date Revised by Checked by

This document is the absolute property of R&M Materials Handling, Inc. This document must not be copied without the written permission of R&M Materials Handling, Inc. The contents thereof must not be disclosed to a third party nor be used for any unauthorized purpose. Contravention will be prosecuted.

Design	Chd	Appd	Ref Drawing	R10-U-02
Date	NORMAL HEADROOM HOIST - SWIVEL TROLLEY			
SLEIGHMECE Owner Dept	FOR CURVED TRACK			
2 PART SINGLE				Folder
R10021_U				Issue
				1

R10-U-02\_1

2025-07-14

R10-U-02