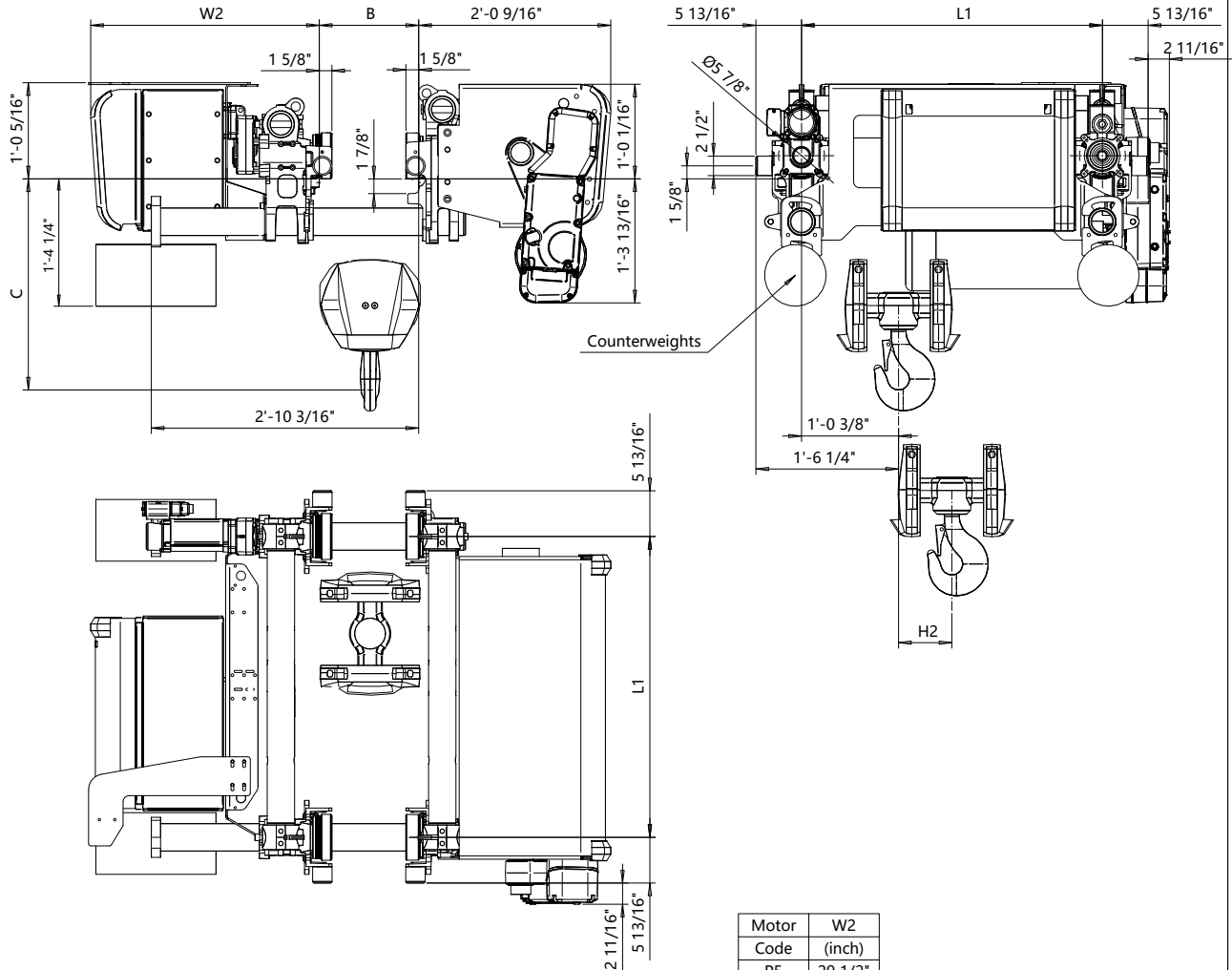


Low Headroom, 4 PART SINGLE
Hoist type:
SXR10 041..L

US-60Hz



Balancing Method is either a thrust rocker or counterweights as needed.

Flange Width	Balancing Method	Maximum Flange Thickness
3.94" - 11.75"	Counterweight only	1 9/16"
11.81" - 24"	Thrust Rocker	1 1/4"
11.81" - 24"	Counterweight	1 9/16"

Motor	W2
Code	(inch)
P5	29 1/2"
P6	29 1/2"
S5	29 1/2"
S6	29 1/2"
W5	33 1/4"
W6	33 1/4"

Flange Width	Headroom C-Dimension					Notes
B-dimension	Case 1	Case 2	Case 3	Case 4	Case 5	
[inch]	[inch]	[inch]	[inch]	[inch]	[inch]	
4.72 - 7.83	20 1/4"	27 3/8"	29 9/16"	24 5/8"	26 3/4"	Case 1: Steel rope without HS22 limit switch
7.87 - 12.8	19 3/4"	27"	29"	24 1/4"	26 3/8"	Case 2: Steel rope with HS22 limit switch
12.83 - 13.78	21 5/8"	26 3/16"	28 9/16"	23 1/4"	25 5/8"	Case 3: Steel rope with HS22 L.S. & Rope angle sensor
13.82 - 15.75	25 3/4"	26"	28 3/8"	26"	26"	Case 4: Synthetic rope with HS22 limit switch
15.79 - 19.69	33 5/8"	33 5/8"	33 5/8"	34 1/2"	34 1/2"	Case 5: Synthetic rope with HS22 L.S. & Rope angle sensor
19.72 - 24	43"	43"	43"	43 1/2"	43 1/2"	HS22 limit switch mandatory with synthetic rope

HOL	Length	L1	H2	Estimated Weight
(ft-in)	code	(inch)	(inch)	(lb)
29'-6"	C	31 5/8"	3 5/8"	1574
39'-4"	D	38 1/2"	5 7/16"	1790
42'-2"	E	45 13/16"	7 1/4"	1900

Load	Class
(ton)	ASME
6	H4+
7 1/2	H4+
10	H4
12 1/2	H3

Rev Explanation Date Revised by Checked by

This document is the absolute property of R&M Materials Handling, Inc. This document must not be copied without the written permission of R&M Materials Handling, Inc. The contents thereof must not be disclosed to a third party nor be used for any unauthorized purpose. Contravention will be prosecuted.

Design	Chd	Appd	Ref Drawing	R10-L-04
Date	LOW HEADROOM HOIST			
SLEQMECE Owner Dept	4 PART SINGLE			
R10041_L				1:10 Folder
				Issue 2



R10-L-04_1

2025-03-26

R10-L-04