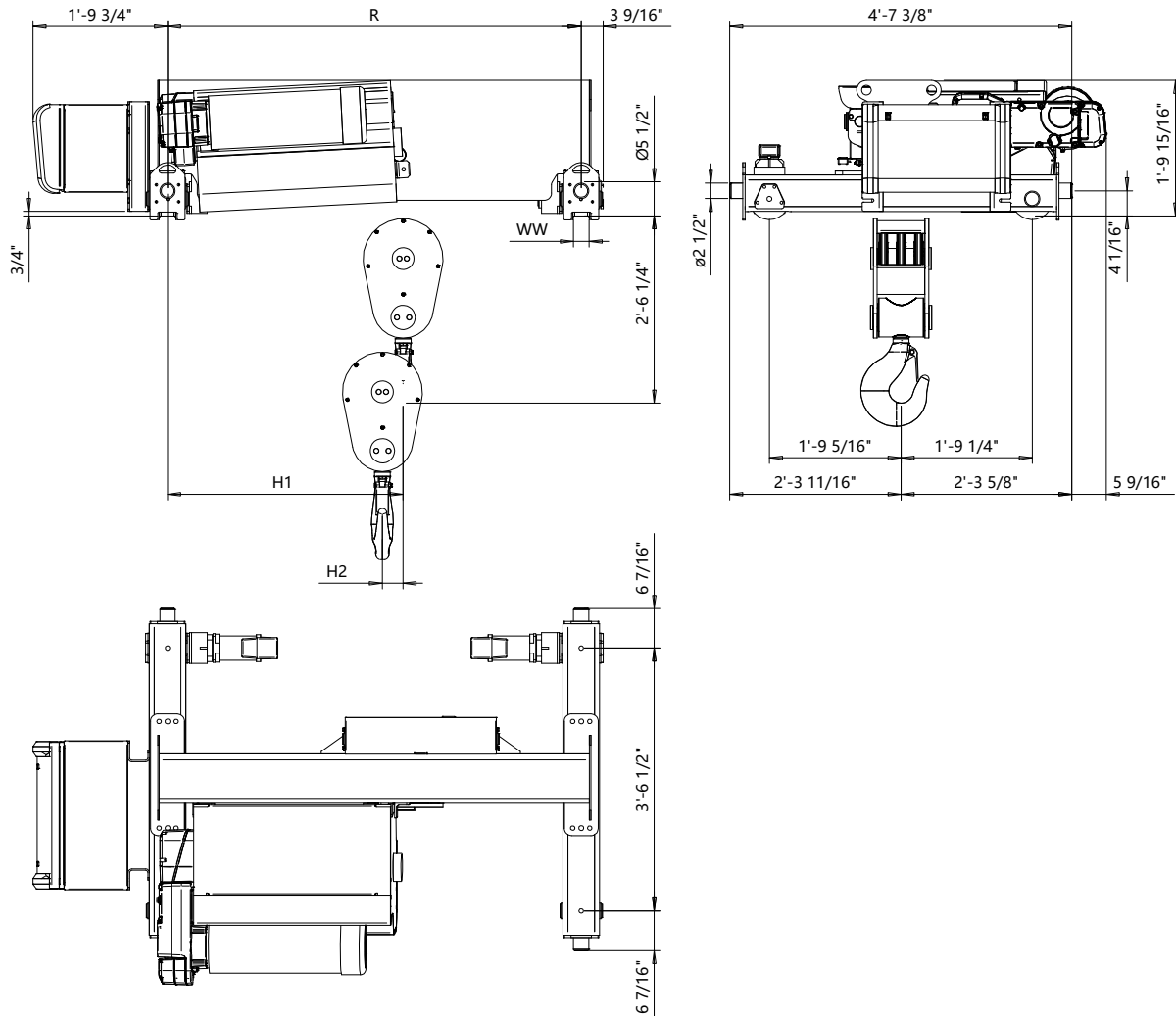


Double Girder - Medium, 6 PART SINGLE
Hoist type:
SXR10 061..M

US-60Hz



Headroom C-Dimension					Notes
Case 1	Case 2	Case 3	Case 4	Case 5	
(inch)	(inch)	(inch)	(inch)	(inch)	
2'-6 1/4"	2'-6 1/4"	2'-6 1/4"	2'-6 1/4"	2'-6 1/4"	Case 1: Steel rope without HS22 limit switch
					Case 2: Steel rope with HS22 limit switch
					Case 3: Steel rope with HS22 L.S. & Rope angle sensor
					Case 4: Synthetic rope and HS22 limit switch
					Case 5: Synthetic rope with HS22 L.S. & Rope angle sensor
					HS22 limit switch mandatory with synthetic rope

								Estimated Weight *	
HOL	Length	H1	H2	WW min	WW max	R min	R max	R min	R max
(ft-in)	code							(lb)	(lb)
19'-8"	C	3'-2 1/8"	3 3/8"	2 1/8"	3 5/16"	5'-6 15/16"	8'-10 5/16"	1502	1740
26'-2"	D	3'-8"	4 1/2"	2 1/8"	3 5/16"	6'-6 3/4"	8'-10 5/16"	1658	1824
32'-9"	E	4'-3 3/4"	5 5/8"	2 1/8"	3 5/16"	7'-10 1/2"	8'-10 5/16"	1810	1881
39'-4"	F	4'-9 11/16"	6 7/8"	2 1/8"	3 5/16"	8'-10 5/16"	8'-10 5/16"	1934	1934

Load	Class
(ton)	ASME
12	H4+
15	H4

* Estimated weight with P5 hoist motor

Standard rail gauges are 5'-6 15/16", 6'-6 3/4", 7'-10 1/2", 8'-10 5/16".

Default trolley gauge is R min. Dim H1 listed is based on R min.

Rev Explanation Date Revised by Checked by

This document is the absolute property of R&M Materials Handling, Inc. This document must not be copied without the written permission of R&M Materials Handling, Inc.
The contents thereof must not be disclosed to a third party nor be used for any unauthorized purpose. Contravention will be prosecuted.

Design	Chd	Appd	Ref Drawing	R10-M-06
Date	DOUBLE GIRDER HOIST			
SLEIGHMECE Owner Dept	6 PART SINGLE			
R10061_M				1:10
				Folder
				Issue
				1