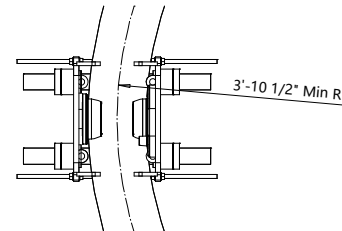
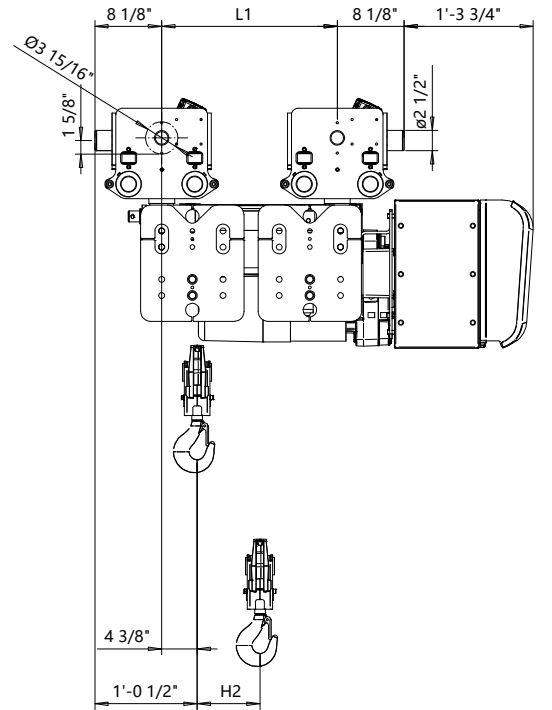
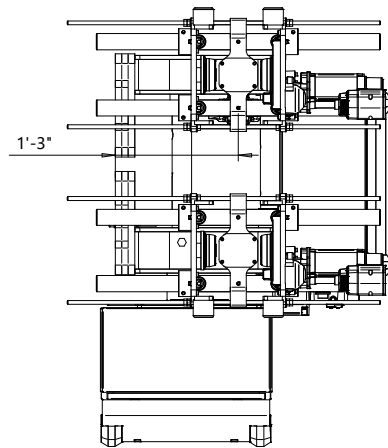
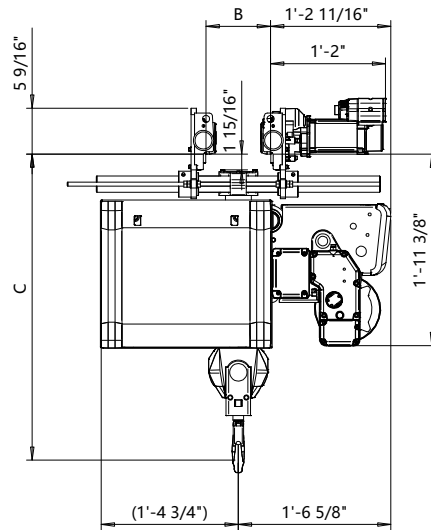


Normal Headroom - Swivel Trolley for Curved Track, 2 PART SINGLE Hoist type:

US-60Hz

SXR3 021..U



Flange Width	Headroom C-Dimension				
B-dimension	Case 1	Case 2	Case 3	Case 4	Case 5
[inch]	[inch]	[inch]	[inch]	[inch]	[inch]
4" - 17 3/4"	32 1/4"	37 3/8"	39 3/4"	33 1/4"	37 3/8"
Case 1: Steel rope without HS22 limit switch					
Case 2: Steel rope with HS22 limit switch					
Case 3: Steel rope with HS22 L.S. & Rope angle sensor					
Case 4: Synthetic rope with HS22 limit switch					
Case 5: Synthetic rope with HS22 L.S. & Rope angle sensor					
HS22 limit switch mandatory with synthetic rope					

HOL	Length	H2	L1	Estimated Weight
(ft-in)	code	(inch)	(inch)	(lb)
42'-8"	B	7 5/8"	21 7/16"	452
59'-0"	C	10 5/8"	27 3/8"	474

Load	Class
(ton)	ASME
1	H4+
1 1/4	H4+
1 1/2	H4

Rev Explanation Date Revised by Checked by

This document is the absolute property of R&M Materials Handling, Inc. This document must not be copied without the written permission of R&M Materials Handling, Inc. The contents thereof must not be disclosed to a third party nor be used for any unauthorized purpose. Contravention will be prosecuted.

Design	Chd	Appd	Ref Drawing	R3-U-02
Date	NORMAL HEADROOM HOIST - SWIVEL TROLLEY			
SLEGMEECE Owner Dept	FOR CURVED TRACK			
2 PART SINGLE				Folder
R3021_U				Issue
				1