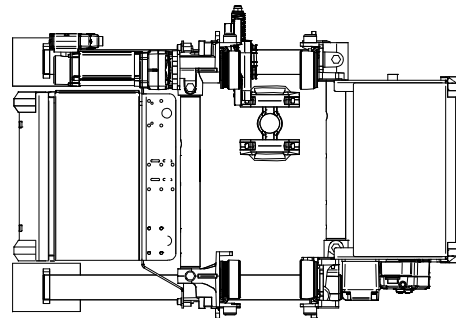
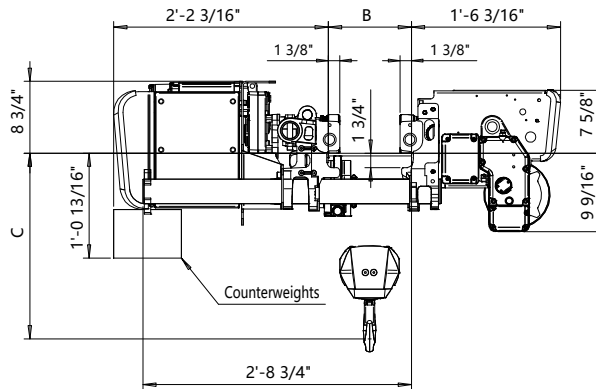
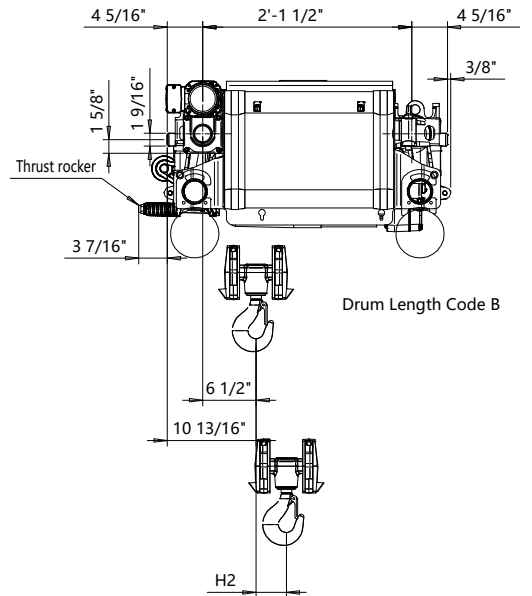


Low Headroom, 4 PART SINGLE
Hoist type:
SXR3 041..L

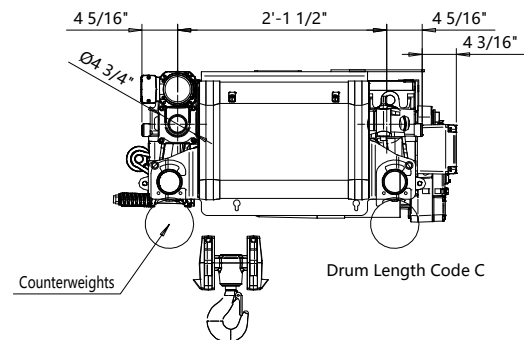
US-60Hz



Drum Length Code B



Drum Length Code B



Drum Length Code C

Balancing Method is either a thrust rocker or counterweights as needed.

Flange Width	Balancing Method	Maximum Flange Thickness
3.94" - 11.75"	Counterweight	1 9/16"
3.94" - 11.75"	Thrust Rocker	1 1/4"
11.81" - 24"	None	1 9/16"

Flange Width	Headroom C-Dimension					Notes
B-dimension	Case 1	Case 2	Case 3	Case 4	Case 5	
[inch]	[inch]	[inch]	[inch]	[inch]	[inch]	
3.94 - 5.87	16 5/16"	23 7/8"	26"	20 1/16"	24"	Case 1: Steel rope without HS22 limit switch
5.91 - 7.83	15 3/4"	23 7/16"	25 3/4"	19 3/4"	23 5/8"	Case 2: Steel rope with HS22 limit switch
7.87 - 9.84	15"	23 1/16"	25 3/8"	19 1/8"	23 7/16"	Case 3: Steel rope with HS22 L.S. & Rope angle sensor
9.88 - 12.8	16 3/16"	22 5/8"	25"	18 1/2"	22 7/8"	Case 4: Synthetic rope with HS22 limit switch
12.83 - 13.78	17 5/16"	21 7/8"	24 7/16"	17 5/16"	22 1/16"	Case 5: Synthetic rope with HS22 L.S. & Rope angle sensor
13.82 - 15.75	18 3/4"	21 1/2"	24"	18 3/4"	22 7/8"	HS22 limit switch mandatory with synthetic rope
15.79 - 17.72	20 1/8"	20 7/8"	23 7/16"	20 1/8"	21 1/16"	
17.76 - 19.69	21 1/2"	21 1/2"	22 7/8"	21 1/2"	21 1/2"	
19.72 - 21.65	22 5/8"	22 5/8"	22 5/8"	22 5/8"	22 5/8"	
21.69 - 24	24 1/4"	24 1/4"	24 1/4"	24 1/4"	24 1/4"	

HOL	Length	H2	Estimated Weight
(ft-in)	code	(inch)	(lb)
21'-4"	B	3 3/4"	490
29'-6"	C	5 1/4"	520

Load	Class
(ton)	ASME
2	H4+
2 1/2	H4+
3	H4

Rev Explanation Date Revised by Checked by

This document is the absolute property of R&M Materials Handling, Inc. This document must not be copied without the written permission of R&M Materials Handling, Inc. The contents thereof must not be disclosed to a third party nor be used for any unauthorized purpose. Contravention will be prosecuted.

Design	Chd	Appd	Ref Drawing	R3-L-04
Date	LOW HEADROOM HOIST			
SLEGMCECE Owner Dept	4 PART SINGLE			
R3041_L				1:10 Folder
Issue				1