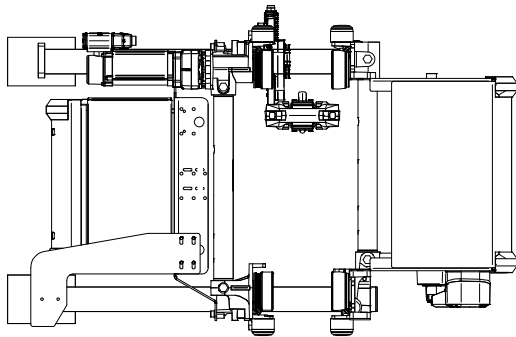
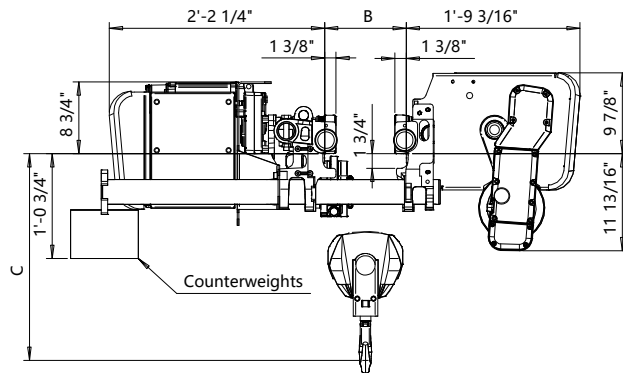
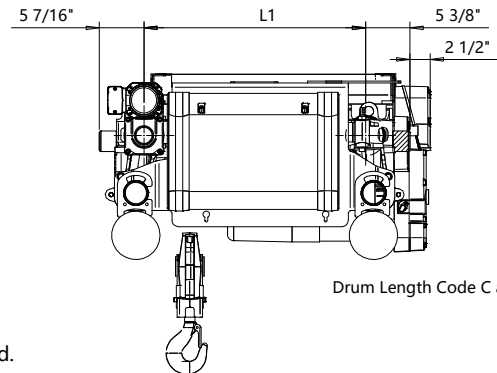
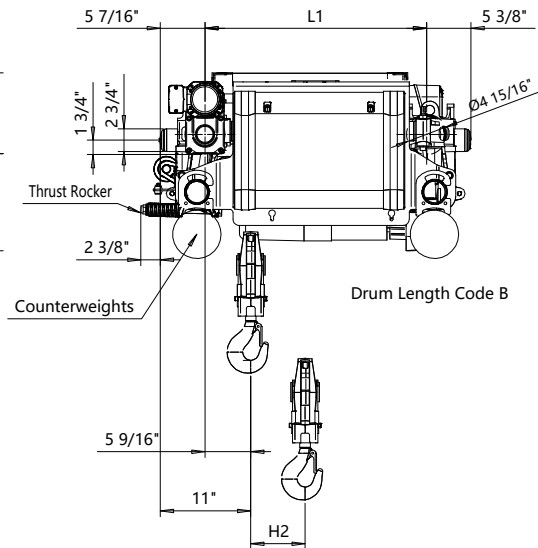


Low Headroom, 2 PART SINGLE
Hoist type:
SXR5 021..L

US-60Hz



Drum Length Code B



Drum Length Code C and D

Balancing Method is either a thrust rocker or counterweights as needed.

Flange Width	Balancing Method	Maximum Flange Thickness
3.94" - 11.75"	Counterweight only	1 9/16"
11.81" - 24"	Thrust Rocker	1 1/4"
11.81" - 24"	Counterweight	1 9/16"

Flange Width	Headroom C-Dimension					Notes
B-dimension [inch]	Case 1 [inch]	Case 2 [inch]	Case 3 [inch]	Case 4 [inch]	Case 5 [inch]	
3.94 - 7.83	18 5/16"	26 3/8"	29"	22 1/16"	26"	Case 1: Steel rope without HS22 limit switch
7.87 - 9.8	18 1/8"	25 3/4"	28 3/8"	21 1/16"	25 3/8"	Case 2: Steel rope with HS22 limit switch
9.84 - 11.81	19 1/8"	25 1/4"	28"	20 1/4"	24 7/8"	Case 3: Steel rope with HS22 L.S. & Rope angle sensor
11.85 - 13.78	21 1/4"	24 7/16"	27 3/16"	21 1/4"	24"	Case 4: Synthetic rope with HS22 limit switch
13.82 - 15.75	22 7/8"	23 5/8"	26 9/16"	22 7/8"	23 1/4"	Case 5: Synthetic rope with HS22 L.S. & Rope angle sensor
15.79 - 17.72	24 7/16"	24 7/16"	25 3/4"	24 7/16"	24 7/16"	HS22 limit switch mandatory with synthetic rope
17.76 - 19.29	25 3/4"	25 3/4"	25 3/4"	25 3/4"	25 3/4"	
19.33 - 21.26	27 5/16"	27 5/16"	27 5/16"	27 5/16"	27 5/16"	
21.3 - 23.23	29"	29"	29"	29"	29"	
23.27 - 24	29 1/2"	29 1/2"	29 1/2"	29 1/2"	29 1/2"	

HOL (ft-in)	Length code	L1 (inch)	H2 (inch)	Estimated Weight (lb)
42'-8"	B	27 1/16"	7 1/4"	630
59'-0"	C	27 1/16"	10 7/8"	700
78'-8"	D	34 5/16"	14 1/2"	750

Load (ton)	Class ASME
1 1/2	H4+
2	H4+
2 1/2	H4

Rev Explanation Date Revised by Checked by

This document is the absolute property of R&M Materials Handling, Inc. This document must not be copied without the written permission of R&M Materials Handling, Inc. The contents thereof must not be disclosed to a third party nor be used for any unauthorized purpose. Contravention will be prosecuted.

Design	Chd	Appd	Ref Drawing	R5-L-02
Date	LOW HEADROOM HOIST			
SLEPCMECE Owner Dept	2 PART SINGLE			
R5021_L				1:10 Folder
Issue				1