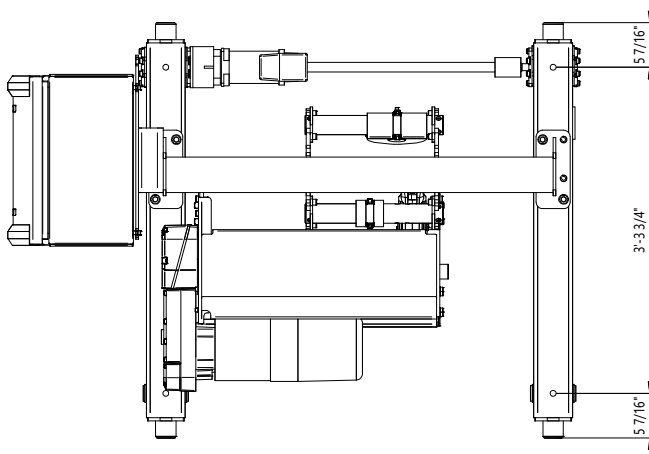
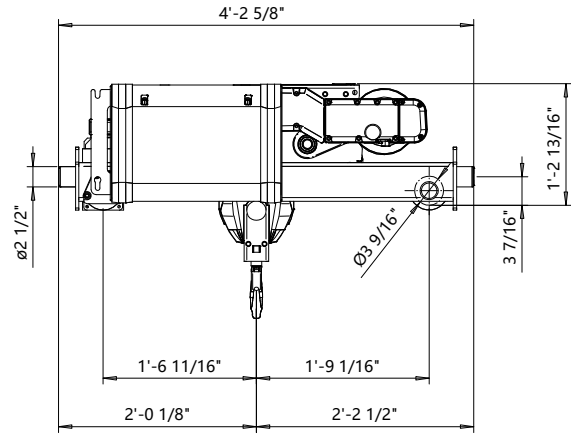
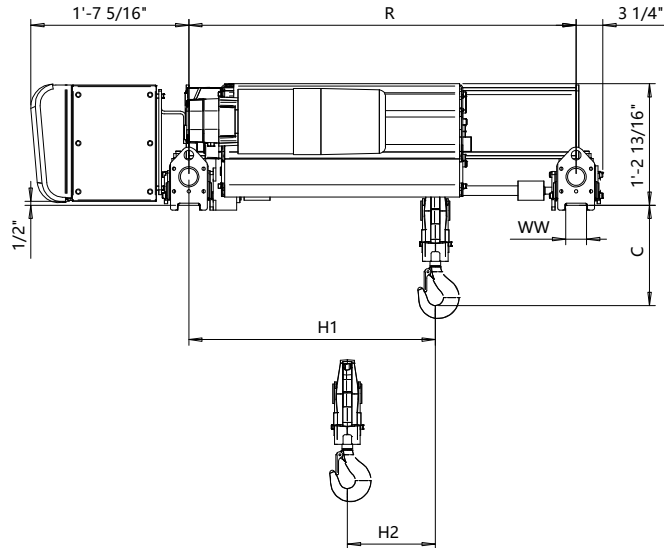


Double Girder - Medium, 2 PART SINGLE
Hoist type:
SXR5 021..M

US-60Hz



Headroom C-Dimension					Notes
Case 1 (inch)	Case 2 (inch)	Case 3 (inch)	Case 4 (inch)	Case 5 (inch)	Case 1: Steel rope without HS22 limit switch
13 3/16"	18 1/2"	20 7/8"	13 11/16"	17 15/16"	Case 2: Steel rope with HS22 limit switch
					Case 3: Steel rope with HS22 L.S. & Rope angle sensor
					Case 4: Synthetic rope and HS22 limit switch
					Case 5: Synthetic rope with HS22 L.S. & Rope angle sensor
					HS22 limit switch mandatory with synthetic rope

HOL (ft-in)	Length code	H1	H2	WW min	WW max	R min	R max	Estimated Weight *	
								R min (lb)	R max (lb)
21'-4"	B	2'-0 1/8"	3 5/8"	2"	2 3/4"	2'-11 7/16"	6'-6 3/4"	703	781
29'-6"	C	2'-6 1/8"	5 7/16"	2"	2 3/4"	3'-11 1/4"	6'-6 3/4"	752	809
39'-4"	D	3'-1 1/4"	14 3/8"	2"	2 3/4"	4'-7 1/8"	6'-6 3/4"	800	842

Load (ton)	Class
2	H4+
2 1/2	H4

* Estimated weight with P3 hoist motor

Standard rail gauges are 2'-11 7/16", 3'-11 1/4", 4'-7 1/8", 5'-6 15/16", 6'-6 3/4".

Default trolley gauge is R min. Dim H1 listed is based on R min.

Rev	Explanation	Date	Revised by	Checked by

This document is the absolute property of R&M Materials Handling, Inc. This document must not be copied without the written permission of R&M Materials Handling, Inc.
The contents thereof must not be disclosed to a third party nor be used for any unauthorized purpose. Contravention will be prosecuted.

Design	Chd	Appd	Ref Drawing	R5-M-02
Date	DOUBLE GIRDER HOIST			
SLEOMECE Owner Dept	2 PART SINGLE			
R5021_M				1:10
				Folder
				Issue
				1