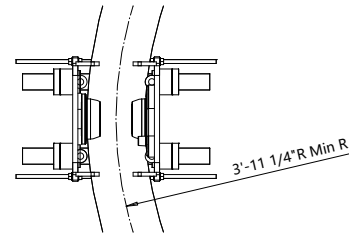
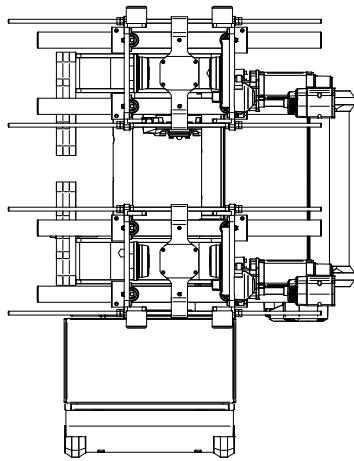
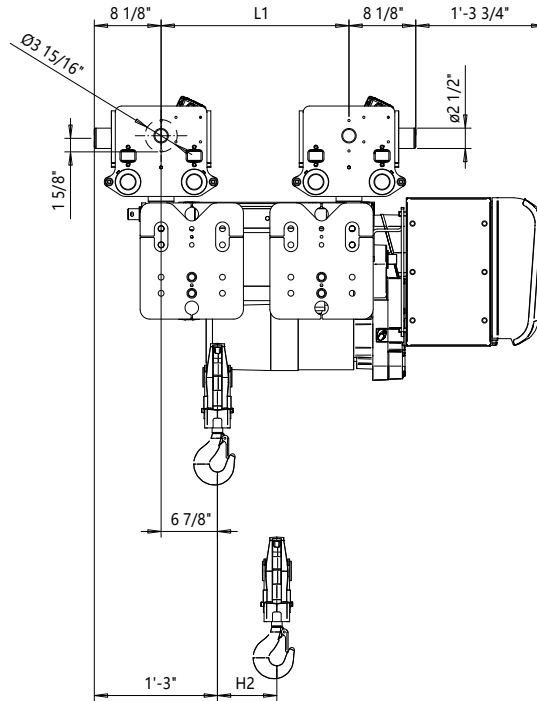
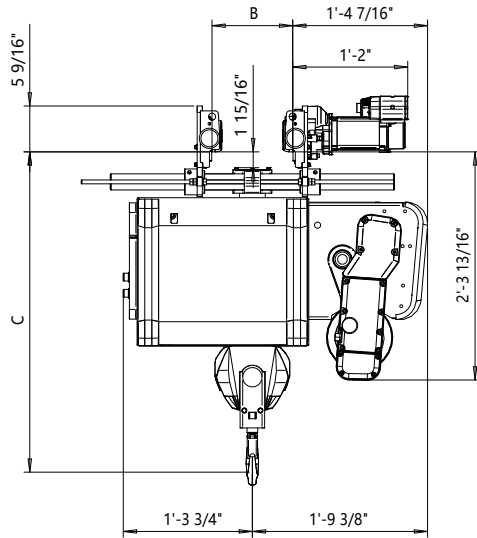


Normal Headroom - Swivel Trolley for Curved Track, 2 PART SINGLE  
 Hoist type:

US-60Hz

SXR5 021..U



Flange Width B-dimension [inch]	Headroom C-Dimension				
	Case 1 [inch]	Case 2 [inch]	Case 3 [inch]	Case 4 [inch]	Case 5 [inch]
4" - 17 3/4"	33 3/4"	39 1/16"	41 1/2"	34 3/8"	38 1/2"
Case 1: Steel rope without HS22 limit switch					
Case 2: Steel rope with HS22 limit switch					
Case 3: Steel rope with HS22 L.S. & Rope angle sensor					
Case 4: Synthetic rope with HS22 limit switch					
Case 5: Synthetic rope with HS22 L.S. & Rope angle sensor					
HS22 limit switch mandatory with synthetic rope					

HOL (ft-in)	Length code	H2 (inch)	L1 (inch)	Estimated Weight (lb)
42'-8"	B	7 1/4"	1'-10 15/16"	1080
59'-0"	C	11"	2'-5"	1140
78'-8"	D	14 1/2"	3'-0 1/8"	1160

Load (ton)	Class ASME
1 1/2	H4+
2	H4+
2 1/2	H4
3	H3

Rev Explanation Date Revised by Checked by

This document is the absolute property of R&M Materials Handling, Inc. This document must not be copied without the written permission of R&M Materials Handling, Inc. The contents thereof must not be disclosed to a third party nor be used for any unauthorized purpose. Contravention will be prosecuted.

Design	Chd	Appd	Ref Drawing	R5-U-02
Date	NORMAL HEADROOM HOIST - SWIVEL TROLLEY			1:10
SLEOMECE Owner Dept	FOR CURVED TRACK			Folder
2 PART SINGLE				Issue
R5021_U				2

