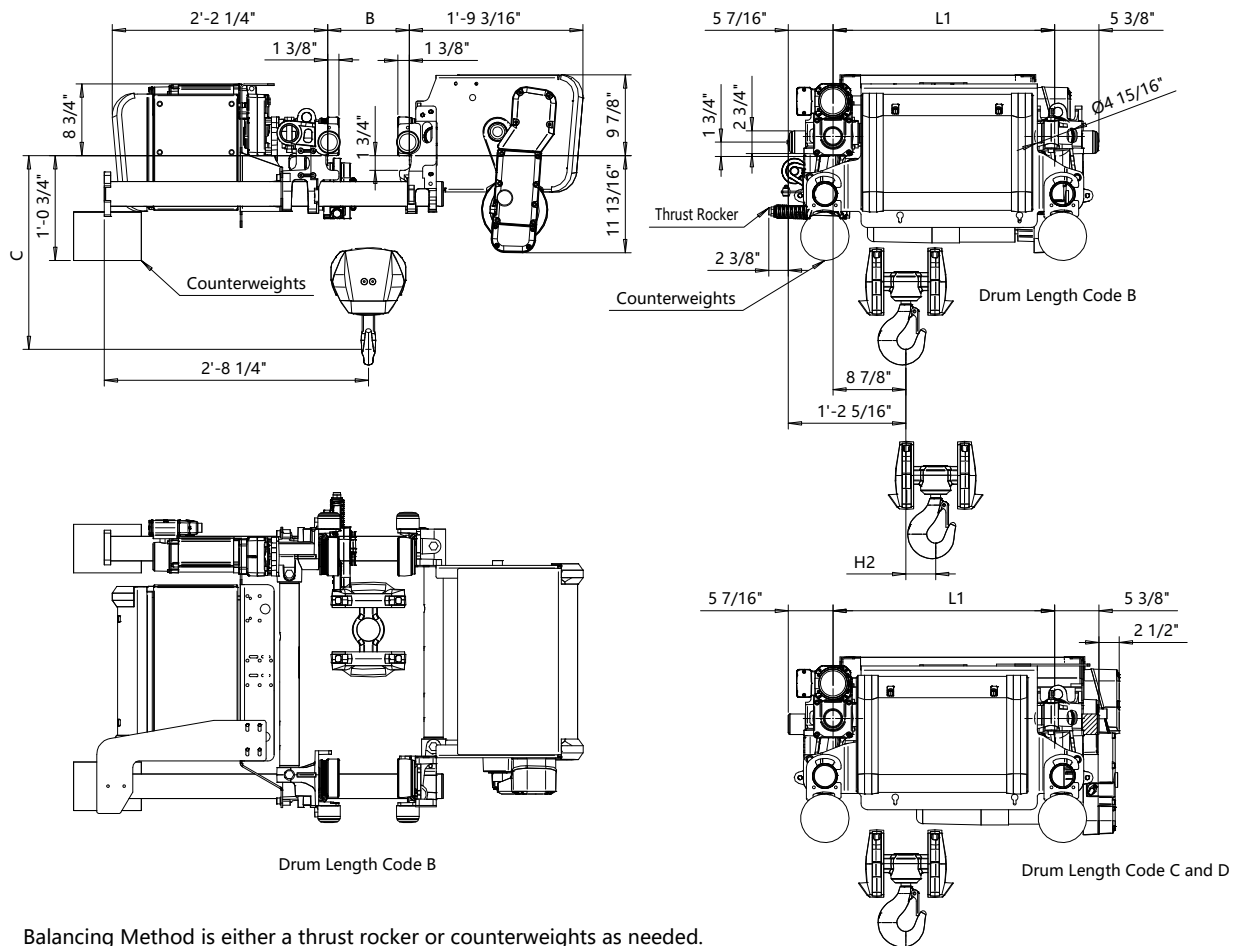


Low Headroom, 4 PART SINGLE
Hoist type:
SXR5 041..L

US-60Hz



Balancing Method is either a thrust rocker or counterweights as needed.

Flange Width	Balancing Method	Maximum Flange Thickness
3.94" - 11.75"	Counterweight only	1 9/16"
11.81" - 24"	Thrust Rocker	1 1/4"
11.81" - 24"	Counterweight	1 9/16"

Flange Width	Headroom C-Dimension					Notes
B-dimension	Case 1	Case 2	Case 3	Case 4	Case 5	
[inch]	[inch]	[inch]	[inch]	[inch]	[inch]	
3.94 - 7.83	18 1/8"	24 5/8"	27"	20 7/8"	24"	Case 1: Steel rope without HS22 limit switch
7.87 - 9.8	16 3/4"	24 1/4"	26 9/16"	20 1/2"	23 5/8"	Case 2: Steel rope with HS22 limit switch
9.84 - 11.81	16 1/8"	23 5/8"	26 3/16"	19 1/8"	23 1/4"	Case 3: Steel rope with HS22 L.S. & Rope angle sensor
11.85 - 13.78	17 3/4"	23 1/4"	26"	18 1/2"	22 7/8"	Case 4: Synthetic rope with HS22 limit switch
13.82 - 15.75	19 3/4"	22 7/8"	25 1/4"	19 3/4"	22 1/4"	Case 5: Synthetic rope with HS22 L.S. & Rope angle sensor
15.79 - 17.72	21 1/16"	21 7/8"	24 3/4"	21 1/16"	21 7/8"	HS22 limit switch mandatory with synthetic rope
17.76 - 19.29	22 7/16"	22 7/16"	24 1/4"	22 7/16"	22 7/16"	
19.33 - 21.26	24 7/16"	24 7/16"	24 7/16"	24 7/16"	24 7/16"	
21.3 - 23.23	26 3/16"	26 3/16"	26 3/16"	26 3/16"	26 3/16"	
23.27 - 24	27"	27"	27"	27"	27"	

HOL	Length	L1	H2	Estimated Weight
(ft-in)	code	(inch)	(inch)	(lb)
21'-4"	B	27 1/16"	3 5/8"	630
29'-6"	C	27 1/16"	5 7/16"	700
39'-4"	D	34 5/16"	7 1/4"	750

Load	Class
(ton)	ASME
3	H4+
4	H4+
5	H4

Rev Explanation Date Revised by Checked by

This document is the absolute property of R&M Materials Handling, Inc. This document must not be copied without the written permission of R&M Materials Handling, Inc. The contents thereof must not be disclosed to a third party nor be used for any unauthorized purpose. Contravention will be prosecuted.

Design	Chd	Appd	Ref Drawing	R5-L-04
Date	LOW HEADROOM HOIST			
SLEOMECE Owner Dept	4 PART SINGLE			
R5041_L				1:10 Folder
Issue				1